



**The Check Is in the Mail
January 2010**

**HAIL CESAR ! 2006 ELECTRONIC
KNIGHTS CHAMPION**



The lone Grandmaster playing in the 2006 Electronic Knights had to play like a Grandmaster to overcome the fierce resistance he encountered every step of the way. There were few easy victories for GM Cesar Augusto Blanco-Gramajo. Cesar was working in the United States when he entered the Electronic Knights, but was called home to Guatemala where he finished the tournament. He earned his GM title in 2003 and took part in the Rest of the World vs. Russia match. His current ICCF rating is 2530 reflecting almost 900 games played in the ICCF. His current USCF rating is

2607, placing him at the top of the rating list.

GAME OF THE MONTH

You would expect a Grandmaster to play a game with deep positional ideas overcoming a determined resistance. Here is Exhibit #1.

DUTCH DEFENSE (D30)

White: Cesar Blanco (2573)

Black: Norman Saba (1985)

2006 Electronic Knights semifinal

**1.d4 d5 2.c4 c6 3.Nf3 e6 4.Qc2 f5 5.Bf4
Nf6 6.e3 Bd6**

The conventional wisdom considering the Stonewall is that Black should avoid exchanging this Bishop for the one on f4 and so 6...Be7 is the more common move. Nevertheless, some very strong players have assayed 6...Bd6.

7.Bxd6

Magerramov-Lodhim Abu Dhabi 1999 continued 7. Nc3 00 8. Bd3 Ne4 9. 00 g5 10. Bxd6 Nxd6 which was good for White though Black later won.

7...Qxd6 8.Nc3 0-0 9.Bd3 Ne4 10.Ne5

Kosic-Heged, Croatia 2008 saw 10. 00 Nd7 11. bxe4 fxe4 12. Nd2 b6 which was about even.

10...Nd7 11.f4

This is one of the problems with 6...Bd6. The double stonewall leaves White with a mildly better Bishop.

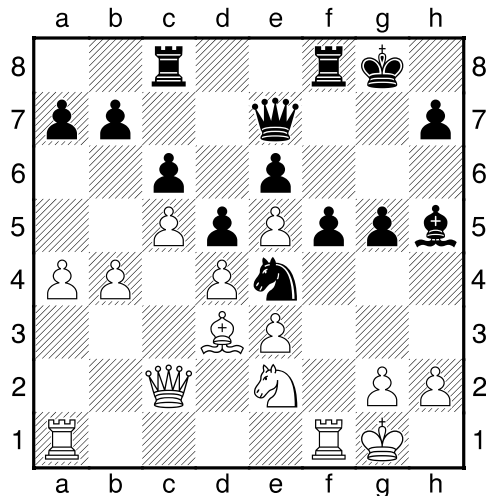
11...Qe7 12.0-0 Nxe5 13.fxe5 Bd7

Saba begins the arduous trek to give this Bishop some work by heading to h5 via e8.

14.Ne2 Rac8 15.c5

With the center secure, White properly seeks space on the queenside. Black stakes out the kingside but White has the edge because of Black's somewhat insecure center.

15...g5 16.a4 Be8 17.b4 Bh5



18.Bxe4!

Now that Black has committed himself to this kingside action, White reveals the weakness of Black's position. Black will have to recapture with the d-Pawn leaving his center weak and no real attacking chances on the kingside as 18...fxe4 just leaves Black's kingside exposed.

18...dxe4 19.Nc3

And now Black must always be concerned with the possibility of Nb1-d2-c4-d6 along with the problems of the bad Bishop.

19...Kh8 20.Qb2 Bg6 21.b5 Qd7 22.Rf2 f4?!

This looks like Black's best move, but it fatally weakens e4.

23.Raf1 Kg7 24.Qd2 Rcd8 25.Qe1 h6

Black's attack has steamed out. He must seek passive moves while White engineers the capture of the e4 Pawn.

26.h4 Rf7 27.Rd2 fxe3

This leads to exchanges that strengthen White's center influence, but Black has little choice.

28.Qxe3 Rxf1+ 29.Kxf1 Rf8+ 30.Kg1 gxf4 31.Nxe4 Bxe4 32.Qxe4 cxb5 33.Qg4+ Kh7 34.d5! bxa4 35.Qe4+ Kg7 36.d6 Qc6

This is a critical decision, but passive play fails -- 36...Rf5 37. Rb2 Rf7 38. Qxh4 Kh7 39. Qe4+ Kg7 40. Ra2 and after the elimination of a4, White will turn his heavy pieces toward the Black King with a technical win due to the d-Pawn.

37.Qg4+ Kh8 38.Qxe6 Qxc5+ 39.Kh2 Qe3 40.Rd1 Qg3+ 41.Kh1 Kg7 42.Rg1

The King is safe -- now the center Pawns are free to advance.

42..a3 43.d7 Qg5 44.Qd6 Rg8 45.e6 1-0

'06 ELECTRONIC KNIGHTS STANDINGS

Cesar Blanco	41.70
John Menke	39.45
Robert Fass	37.85
Walter Brower	33.40
Walter Brower	31.15
Michael Buss	30.05
Kenneth Goebel	30.00
Timothy Harris	28.90
Benjamin Coraretti	27.90
Timothy Harris	26.15
Corky Schakel	25.45
Barry Walker	21.75
William Turin	21.05
John Gragg	19.90

ABSOLUTE PLAYERS !

Remember to send in your bids for the 2010 Absolute now forming ! The top 13-rated players (over 2200) will be selected to participate in the 2010 Absolute. It will be played on the webserver, the entry is free, and there is a prize fund of at least \$500. I want to hear from you!

Jeffrey Baffo wins Colorado State Championship

Scoring 7 1/2 - 1/2, Jeffrey Baffo took uncontested first place in the 2009 Colorado State Correspondence Chess Championship. Second was Klaus Johnson and third place was earned by Archie Shipp.

Baffo	█	=	1	1	1	1	1	1	1	7½
Johnson	=	█	=	1	0	1	1	1	1	6
Shipp	0	=	█	1	0	=	=	1	1	4½
Covington	0	0	0	█	1	=	=	1	1	4
Fish	0	1	1	0	█	0	1	0	=	3½
Brennan	0	0	=	=	1	█	=	1	0	3½
Lahti	0	0	=	=	0	=	█	1	1	3½
Neuhaus	0	0	0	0	1	0	0	█	1	2
Gaige	0	0	0	0	=	1	0	0	█	1½

DUNST OPENING (A00)

White: Jeffrey Baffo (2325)

Black: Archie Shipp (1353)

2009 Iowa State CC Championship

1.Nc3 d5 2.e4 d4 3.Nce2 e5 4.Nf3 Nc6
 5.Ng3 Nf6 6.Bc4 Bd6 7.a3 0-0 8.d3 Na5
 9.Ba2 Be6 10.Bxe6 fxe6 11.Bd2 Nc6
 12.h4 Qe8 13.h5 a5 14.h6 g6 15.Rh4 b5
 16.Kf1 b4 17.Kg1 bxa3 18.bxa3 Be7
 19.Ne2 Nd7 20.Rh3 a4 21.Rg3 Nc5
 22.Bg5 Bd6 23.Nd2 Be7 24.Bxe7 Qxe7
 25.Nc4 Qh4 26.Qd2 Rab8 27.Rf1 Nd7
 28.Qc1 Nb6 29.Nxb6 Rxb6 30.c3 Qe7
 31.cxd4 exd4 32.f4 e5 33.Rgf3 Rf6
 34.Qc2 Qxa3 35.fxe5 Rxf3 36.Qc4+
 Kh8 37.Rxf3 Qe7 38.Rf6 Rb1+ 39.Nc1
 Nxe5 40.Qxc7 1-0

DECEMBER RESULTS

John Collins

Antonio Romero	07C33	5-1
Christopher Nelson	08C32	6-0
Gerard Soricelli	07C51	4½-1½
Leonard Carter	07C35	6-9

Swift Quads

Na Li	09SQ09	5 ½-½
-------	--------	-------

Walter Muir

Marc Plum	08W38	6-0
Daniel Todd	09W05	5 ½-½
Marc Plum	09W04	4-2

Palciauskas Tournament

Jeff Daven	08P06	5 ½-½
------------	-------	-------

Trophy Quad

John Terrall	09Q07	6-0
John Terrall	09Q05	6-0
Frank Barrett	07Q12	5-1

CLASSIFIED ADS

LEARN CHESS BY MAIL ! Lessons given by mail, telephone, ICC – many different ways. I specialize in players rated 800-2100 who would like to improve their game. Contact me for information. Alex Dunne, 324 West Lockhart St., Sayre, PA 18840 or chesskinetics@stny.rr.com

SORICELLI COLLINS CHAMP

Gerard Soricelli of the Bronx took first place in John Collins 07C51.

Soricelli	2147		11	1=	10	4 ½
Truax	2091	0Q		1Q	11	3
Flowers	2159	0=	01		10	2½
Sanjurjo	2271	01	00	01		2

Soricelli gives his h-Pawn a jet pack in this win from 07C51.

SLAV DEFENSE (D19)

White: Gerard Soricelli (2147)

Black: Chris Sanjurjo (2271)

2007 John Collins

1.d4 d5 2.Nf3 Nf6 3.c4 c6 4.Nc3 dxc4
5.a4 Bf5 6.e3 e6 7.Bxc4 Bb4 8.0-0
Nbd7 9.Qe2 0-0 10.e4 Bg6 11.Bd3 Bh5
12.e5 Nd5 13.Ne4 h6 14.Ng3 Bxf3
15.Qxf3 Re8 16.Qg4 Kh8 17.Nh5 Bf8
18.Nxg7 Bxg7 19.Qh5 Kg8 20.Bxh6
Bxh6 21.Qxh6 Nf8 22.Ra3 Ne7 23.Rd1
Neg6 24.Bxg6 Nxg6 25.Rh3 Qa5
26.Qh7+ Kf8 27.Rf3 Re7 28.Qxg6 Rd8
29.Qf6 Ke8 30.h4 Qxa4 31.b3 Qb4
32.h5 Kd7 33.h6 Kc8 34.h7 Ree8
35.Rh3 Rh8 36.Qxf7 1-0

WORLD CORRESPONDENCE CHESS CHAMPIONSHIP 2010 PRELIMINARIES

All entries will be accepted according with ICCF Tournament Rules valid as from 1.1.2010 to be received **not later than 31 January 2010**. The start date is **10 March 2010** Start dates for Semis, Candidates, and Finals will also be once a year, progressively later in the year. Once per year starts will be standard in future years.

Preliminaries normally have 13 players with the possibility for the TTC to extend them to 15 or 17 players if appropriate in special situations.

If the number of the entries won't be a multiple of 13, the players who have been entered according to point 1.1.1.k and who have the lowest ICCF ELO rating won't be admitted to the Preliminaries.

Players entering more than one section will be accepted only to fill vacancies. All entries must include the following: Name of the player, ICCF ID number, Address (email and/or postal where relevant), Country Code.

Qualifications requirements are listed at <http://www.iccf-webchess.com/EventsAnnouncements.aspx> under event Name.

If you would like to become World CC Champion, contact Corky Schakel at schakels@comcast.net

Quote: Postal is a "purer" form of chess -- meaning that the result flows more from the dynamics of chess and less from the blunders and inaccuracies brought on by time pressure, nerves, memory limitations, difficulties in visualization, and the myriad other factors that come into play in over the board contests. == Jerry Meyers

CORRESPONDENCE RECORDS

Humberto Cruz of Vero Beach, Florida writes that he (as a baseball fan) loves baseball statistics. He has a hefty non-losing streak going and he wonders what the records are in CC. Well, Humberto, here are a few of the records:

Highest rating: John Penquite 2939

Consecutive wins without a draw or defeat: 58 games John Penquite

Best finish in Golden Knights – John Penquite, 1st, 2nd, 3rd, and 4th 1990 GK

Most victories in USCF Absolute – James O'Brien three (plus one 2nd place)

Most Golden Knights victories – Hans Berliner 1955, '56 and '59 and Leon Stoltzenberger 1947-8, '50, and '60

Most moves in postal game 186 moves in Bedu-Lemaire, 1989 (thought spurious). The next candidate is 155 moves in Hund-Namyslo, Germany cc 1987.

In USCF play since I have been keeping records, Wilson-Keating, 2007 Absolute, 121 moves.

The longest running cc rivalry Reinhart Straszacker and Hendrik Roelof van Huyssteen (both of South Africa) played their first game of cc in 1946. After 112 matches, with both men having won half the games, their record play of over 53 years ended with the death of Straszaker on October 13, 1999. == Guinness Book of Records 2004

IOWA STATE CHAMPIONSHIP PRELIMINARIES

Mark Capron and Brent Walker both scored 6 ½-1 ½ and James Hodina finished with 5-3 to join Wesley Ferguson (who was seeded) in the Finals of the Iowa State email Championship.

PIRC'S DEFENSE (B00)

White: Brent Walker (1868)

Black: Mark Capron (1903)

Iowa State Preliminary 2009

1.Nf3 Nc6 2.d4 d6 3.e4 Nf6 4.Nc3 Bg4 5.Be3 e5 6.d5 Nb8 7.Be2 Be7 8.h3 Bd7 9.Qd2 0-0 10.g4 a6 11.g5 Ne8 12.h4 b5 13.a3 c5 14.dxc6 Nxc6 15.Nd5 Be6 16.h5 Bg4 17.0-0-0 f5 18.exf5 Bxf5 19.Nh4 Be6 20.Nxe7+ Qxe7 21.Bd3 d5 22.Bxh7+ Kxh7 23.Ng6 Qf7 24.Bc5 1-0

Bishops of opposite colors sometimes gives the attacker an extra piece to attack with, as in this game

CARO-KANN DEFENSE (B14)

White: L. Bonsack (2096)

Black: William Jemty (2091)

2002 Golden Knights Final

1.e4 c6 2.d4 d5 3.exd5 cxd5 4.c4 Nf6 5.Nc3 e6 6.Nf3 dxc4 7.Bxc4 Nc6 8.0-0 Be7 9.Qe2 a6 10.Rd1 0-0 11.d5 exd5 12.Nxd5 Nxd5 13.Bxd5 Qc7 14.Qe4 Bf6 15.Ng5 Bxg5 16.Bxg5 Bd7 17.Bf4 Qc8 18.Bd6 Re8 19.Qf4 Be6 20.Be4 f5 21.Bf3 Qd8 22.Bh5 g6 23.Bf3 Qf6 24.Bxc6 bxc6 25.Be5 Qf7 26.Bc3 Bd5 27.Qd4 Kf8 28.Re1 Rab8 29.b4 Rbd8 30.a4 Ra8 31.b5 axb5 32.axb5 Rac8 33.Qh8+ 1-0

An excellent example of how to use the two Bishops in an endgame -- keep improving the placement of the Bishops, restrict the Knight, win a Pawn, Queen the extra Pawn...

CARO-KANN DEFENSE (B11)

White: Robert Jacobs (2391)

Black: Michael Calogridis (2321)

2004 Absolute

1.e4 c6 2.Nc3 d5 3.Nf3 Bg4 4.Be2 e6
5.h3 Bxf3 6.Bxf3 Nf6 7.0-0 Be7 8.Re1
0-0 9.d3 a5 10.a3 Nbd7 11.d4 dxe4
12.Nxe4 Nxe4 13.Bxe4 Nf6 14.Bd3 Qd7
15.Bf4 Rfd8 16.Be5 Rac8 17.a4 b6
18.Qf3 c5 19.Ba6 Ra8 20.Bb7 Ra7
21.Bc6 Qc8 22.dxc5 bxc5 23.Rad1 Rxd1
24.Rxd1 h6 25.b3 Nh7 26.Bb5 Bf6
27.Bd6 Nf8 28.Qe4 Ng6 29.Rd3 Be7
30.Bg3 Bf8 31.h4 Ne7 32.Be5 Ng6
33.Bc3 Qb8 34.h5 Ne7 35.Rf3 Qa8
36.Qxa8 Rxa8 37.Rd3 Nf5 38.Rd7 Nd4
39.Bd3 Nf5 40.Be5 Nd4 41.Be4 Ra6
42.Rd8 f6 43.Bd3 Rc6 44.Bh2 Kf7
45.Bg6+ Kg8 46.Be4 Rb6 47.Bc7 Ra6
48.Bd3 Rc6 49.Bxa5 f5 50.b4 c4 51.Bf1
Nxc2 52.b5 Rd6 53.Bxc4 Kf7 54.Rxd6
Bxd6 55.Bc3 Be5 56.a5 Nd4 57.b6 Nc6
58.Bb5 Nd8 59.Bd2 Ke7 60.Bb4 Bxb4
61.a6 Bc5 62.a7 1-0

Christopher Nelson demonstrates a finely controlled game in this John Collins win.

PIRC'S DEFENSE (B09)

White: Joseph Slawinski (1641)

Black: Christopher Nelson (1700)

2008 John Collins

1.d4 d6 2.e4 Nf6 3.Nc3 g6 4.f4 Bg7
5.Nf3 0-0 6.Be2 c5 7.dxc5 Qa5 8.0-0
Qxc5+ 9.Kh1 Ng4 10.Qe1 Bxc3
11.Qxc3 Nf2+ 12.Rxf2 Qxf2 13.Qe3
Qxe3 14.Bxe3 Nc6 15.a3 b6 16.b4 f5
17.Bc4+ Kg7 18.exf5 Bxf5 19.c3 Rac8

20.Nd4 Nd8 21.Nxf5+ Rxf5 22.Bd3 Rd5
23.Bd4+ e5 24.fxe5 dxe5 25.Be4 exd4
26.Bxd5 dxc3 27.Rc1 Kf6 28.Kg1 Ke5
29.Bf3 c2 30.Kf2 Kd4 31.Ke2 Kc3
32.Be4 Kb2 33.Kd2 Ne6 34.Rxc2+
Rxc2+ 35.Bxc2 Nd4 36.Bd3 b5 37.h3
Nb3+ 0-1

Kristo and Keith play with knives, and it is Keith who gets cut.

SICILIAN DEFENSE (B93)

White: Kristo Miettinen (2364)

Black: Keith Rodriguez (2384)

2007 Absolute

1.e4 c5 2.Nf3 d6 3.d4 cxd4 4.Nxd4 Nf6
5.Nc3 a6 6.f4 e5 7.Nf3 Nbd7 8.Bd3 Be7
9.0-0 0-0 10.Kh1 b5 11.a4 b4 12.Nd5
Bb7 13.fxe5 dxe5 14.Nxe7+ Qxe7
15.Qe1 b3 16.Nh4 Rfc8 17.Nf5 Qf8
18.Bd2 bxc2 19.Rc1 Nc5 20.Bxc2 Bxe4
21.Nh6+ gxh6 22.Rxf6 Bg6 23.Bc3
Bxc2 24.Rxc2 Nxa4 25.Bb4 Qg7
26.Rxa6 Re8 27.Rac6 Re6 28.Rxe6 fxe6
29.Re2 Nb6 30.Re3 Qc7 31.Rc3 Qb8
32.Rg3+ Kh8 33.Bc3 Nd7 34.Rd3 Nf6
35.h3 1-0

