



The Check Is in the Mail September 2009

Edward Duliba, Grandmaster !



As Grandmaster Edward Duliba remarked, "It was a long path". What he did not say and what few in the chess world know, is that it is tougher to become a CC Grandmaster than an OTB one. Edward Duliba has accomplished that task. He began the quest for the GM title by playing, and eventually winning, US events. Edward played in five US Championships, #11,12,14,15 and 17 (winning the 15th) winning the 1992 Golden Knights and finishing 4th in 1994, playing and winning in two Absolute tournaments 1998 and 2007, representing the US in the 13th Olympiad., playing in the ICCF World Cup semifinals, and presently in two Candidates events for the World

Championship. And now the GM title. It is an impressive resume. Having reached the peak, Edward has decided that there are no further goals for him in chess. Therefore, when his current game load is exhausted, he plans to hang up his Pawns and retire.

GAME OF THE MONTH

It is a shame that GM Duliba plans to retire. That means there will be no more games like this:

NIMZOINDIAN DEFENSE (E32)
White: GM Nikolai Muzyka (2423)
Black: GM-elect Ed Duliba (2543)
WCC Candidates 27, 2007
(Notes by Edward Duliba)

1.d4 Nf6 2.c4 e6 3.Nc3 Bb4 4.Qc2 0-0
5.a3 Bxc3+ 6.Qxc3 b6 7.Bg5 Bb7 8.e3
d6 9.f3 Nbd7 10.Bd3 h6?!

10...c5 may be an improvement

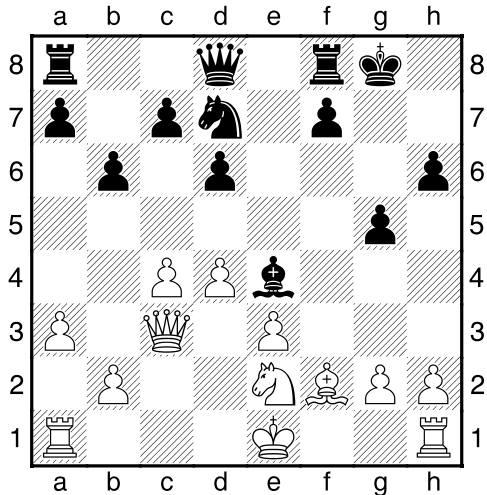
11.Bh4 e5 12.Ne2

I would prefer 12. Bf5

12...e4 13.fxe4

We have been following standard opening moves so far. Now Black's strategy for the game is to attack kingside, while White's strategy is to attack queenside. Both players succeed in achieving their objectives. The problem is that White's King is sitting kingside.

13...g5 14.Bf2 Nxe4 15.Bxe4 Bxe4



Opposite-colored Bishops mean that attack is the appropriate strategy. Defense is made difficult since the Bishop cannot be opposed by its counterpart.

16.0-0 Qe7 17.d5

White pursues his strategy and gains a space advantage on the queenside. Black follows up on the kingside.

17...h5 18.Nd4 f5 19.Nc6

The Knight is well placed, but White now begins to feel pressure kingside.

19...Qh7 20.h4 Rf7 21.b4 Qg6 22.Ra2 Kh7 23.Kh2 Rg8 24.Rg1

If 24. Qe1, then 24...Nf6 25. Bg3 →

24...Nf6 25.Qe1

An alternative is 25. Nd4 Ng4+ 26. Kh1 Nxf2+ 27. Rxf2 gxh4 28. Qe1 →

25...Ng4+ 26.Kh1 f4 27.exf4 gxf4 0-1

If 28. Nd4 Ne5 → (and Black threatens a quick finish with 28...Qf5 followed by ...Nxf2+ and ...Qh3 mate -- Dunne)

J. FRANKLIN CAMPBELL HONORED

J. Franklin Campbell has been named the recipient of the the silver Bertl von Massow Award for ten years of outstanding service to ICCF (and the correspondence chess world in general). Congratulations, Franklin !

AUGUST TOURNAMENTS

Express Tournaments

Tim Corkum	09ET02	5 ½-½
David Luscomb	09ET01	6-0
Michael Quirk	08ET03	5-1

Trophy Quad

Dana Daves	07Q19	4-2
Joseph Reynolds	07Q19	4-2
David Sherman	08Q06	5 ½-½
Patrick Schilling	08Q09	5-1

Swift Quad

Daniel Walker-Elias	09SQ06	6-0
Wilbur Tseng	08SQ02	4 ½-1 ½
Bobby White	08SQ02	4 ½-1 ½

Palciauskas Tournament

Terry Johnson	07P06	5 ½-½
William Ford	07P06	5 ½- ½

Walter Muir

John Davis	09W20	5-1
Patrick Walsh	09W09	5-1

USA vs. Rest of the World

Just underway is a friendly 54-board match of the USA vs. The Rest of the World. There are 45 US players (9 of them playing two boards) participating. Concurrently there is also an Under 2100 USA vs. ROW that started in August. I will have more on these matches at a later date.

DAVES AND REYNOLDS TAKE 07Q19 TROPHY QUAD

Daves	2318		=	=	1	4-2
			=	=	1	
Reynolds	2097	=		1	=	4-2
		=		1	=	
Harris	2209	=	0		1	3-3
		=	0		1	
Leach	2141	0	=	0		1-5
		0	=	0		

Dana Daves notes that the game follows Vasquez – Vallejo Pons until Move 24 when Reynolds' 24. Qf5 seems stronger than the 24. Qg3 recommended by Richard Pallister in his book Sicilian Najdorf pg. 170.

At the end, perpetual check cannot be avoided.

SICILIAN DEFENSE (B99)

White: Joseph Reynolds (2097)

Black: Dana Daves (2318)

2007 Trophy Quad

1.e4 c5 2.Nf3 d6 3.d4 cxd4 4.Nxd4 Nf6 5.Nc3 a6 6.Bg5 e6 7.f4 Be7 8.Qf3 Qc7 9.0-0-0 Nbd7 10.g4 b5 11.Bxf6 Nxf6 12.g5 Nd7 13.f5 Nc5 14.f6 gxf6 15.gxf6 Bf8 16.Rg1 h5 17.Rg7 b4 18.Nd5 exd5 19.exd5 Nd7 20.Nc6 Bb7 21.Re1+ Ne5

22.Nxe5 dxe5 23.Bh3 Qd6 24.Qf5 Kd8 25.Rxf7 Bc8 26.Qd3 e4 27.Rxe4 Bxh3 28.Qxh3 Qxd5 29.Rxf8+ Rxf8 30.Qh4 Kc8 31.Rc4+ Kb7 32.Rxb4+ Kc6 33.Rc4+ Kb6 34.Rb4+ Kc5 35.c3 Qh1+ 36.Kc2 Qg2+ 37.Kb3 Qd5+ 38.Ka3 Kc6 ½-½

CORRES. CHESS IN THE NEWS



Telegraph.co.uk an English newspaper released a news article on 24 July about postcards sent 50 years ago at the height of the cold war. The postcards (expected to sell at 1000 pounds at auction) have messages revolving around chess and chess moves on them. The player, Graham Mitchell, was head of counter-espionage at M15 and would have been responsible for recruiting double agents. The article suspects the cards could have carried secret messages in the chess moves. Graham Mitchell was a fairly strong CC player at the time and later became an IM. The reporter writes, “Of course they could just be innocent correspondence, but at the height of the Cold War it seems logical Mitchell would have more important things on his mind.” *More important things?* It is clear that the reporter was not a correspondence chess player.

For the curious, here is Graham Mitchell winning against America's John Collins in the First World CC Championship.

RUY LOPEZ (C91)

White: Graham Mitchell

Black: John Collins

1st World CC Championship 1953

1.e4 e5 2.Nf3 Nc6 3.Bb5 a6 4.Ba4 Nf6
5.0-0 Be7 6.Re1 b5 7.Bb3 d6 8.c3 0-0
9.d4 Bg4 10.Be3 exd4 11.cxd4 Na5
12.Bc2 Nc4 13.Bc1 c5 14.b3 Nb6
15.Bb2 Rc8 16.Nbd2 Nfd7 17.a4 cxd4
18.a5 Na8 19.h3 Bh5 20.g4 d3 21.Bxd3
Nc5 22.Bc2 Bg6 23.Nf1 Re8 24.Ng3
Nc7 25.Nd4 N7e6 26.Ndf5 Bf8 27.Bc1
f6 28.b4 Nd7 29.f4 Bf7 30.Bb3 Qc7
31.Be3 g6 32.Rc1 Qb8 33.Nd4 Rxc1
34.Bxc1 Nd8 35.Bxf7+ Nxf7 36.Be3
Qb7 37.Qb3 Bh6 38.Rc1 Rc8 39.Rxc8+
Qxc8 40.Kf2 Bf8 41.Qe6 Qc7 42.h4
Qb7 43.h5 d5 44.g5 Bxb4 45.Nc6 Nf8
46.Qxf6 Bd6 47.exd5 1-0

CLASSIFIED ADS

LEARN CHESS BY MAIL ! Lessons given by mail, telephone, ICC – many different ways. I specialize in players rated 800-2100 who would like to improve their game. Contact me for information. Alex Dunne, 324 West Lockhart St., Sayre, PA 18840 or chesskinetics@stny.rr.com

Quote: In what other form of competition do you have to wait several years before uncorking the champagne?
-- Ivar Bern

In this fist fight, if Black could have castled on Move 25, all would be well, but ...

SICILIAN DEFENSE (B33)

White: William Lombard (0000)

Black: Frank Collemer (1841)

2006 Golden Knights

1.e4 c5 2.Nf3 Nc6 3.d4 cxd4 4.Nxd4
Nf6 5.Nc3 e5 6.Ndb5 d6 7.Bg5 a6 8.Na3
b5 9.Nd5 Qa5+ 10.c3 Nxe4 11.Qf3
Nxc5 12.Nf6+ gxf6 13.Qxc6+ Kd8
14.Qxa8 b4 15.Nc4 Qc5 16.Be2 Ne6
17.Ne3 bxc3 18.0-0 cxb2 19.Rad1 Nc7
20.Qb8 Bg7 21.Rxd6+ Ke7 22.Rfd1
Nb5 23.Nd5+ Ke8 24.Bxb5+ axb5
25.Nb6 Bh6 26.Rd8+ 1-0

Black's resignation may look premature but after 39.....Rxa2 40. Ng7! A good defense is too hard to find.

RUY LOPEZ (C95)

White: Gary Kubach (2532)

Black: A Davidov (2415)

16 Olympiad, 2006

1.e4 e5 2.Nf3 Nc6 3.Bb5 a6 4.Ba4 Nf6
5.0-0 Be7 6.Re1 b5 7.Bb3 d6 8.c3 0-0
9.h3 Nb8 10.d4 Nbd7 11.Nbd2 Bb7
12.Bc2 c5 13.d5 Nb6 14.Nf1 Bc8
15.Ng3 a5 16.Bd3 c4 17.Bc2 h6 18.Be3
Qc7 19.Qe2 Na4 20.Bxa4 bxa4 21.Nd2
Ba6 22.Nf5 Rfb8 23.Rab1 Bf8 24.Qf3
Nd7 25.Qh5 Qd8 26.Qd1 Bb5 27.Kh2
Kh7 28.Qf3 Qe8 29.g4 g6 30.Rg1 Rb7
31.g5 h5 32.Nf1 Rab8 33.N1g3 Ba6
34.Nxh5 Rxb2 35.Rxb2 Rxb2 36.Qg4
Bc8 37.Nf6+ Nxf6 38.gxf6 Kg8 39.Qh4
1-0

2010 ABSOLUTE ANGELS ?

The USCF Absolute tournament is USCF's premiere invitational tournament. Each year, thirteen of our strongest players meet in combat on a webserver, the winner gaining bragging rights as the Absolute champion for a year. I invite interested patrons of the game to contribute to the purse for these correspondence champions. Please contribute. You may send your contributions to Joan DuBois at PO Box 3967, Crossville, TN 38557 or address your checks to USCF and send them to me at USCF, PO Box 367, Sayre, PA 188540.

Last year your generosity allowed these fighters to play for a prize fund of \$300. That is small pay for the thought and effort they put into their games. For those who would like to submit bids for the 2010 championship, please wait until the 2010 Rating List comes out early in 2010. I will announce the time in "The Check Is in the Mail" early in 2010, probably January or February.

Wanted: One Master or Expert to take the remaining spot in an Express Tournament (of Master/Expert strength)/ This is strictly on a first come, first assigned basis. If your rating is 2000+ contact me and I will save your place in a strong tournament.

NINTH PAN-AMERICAN GAMES

After Millstone fights to make his c4 pawn safe, it performs heroically.

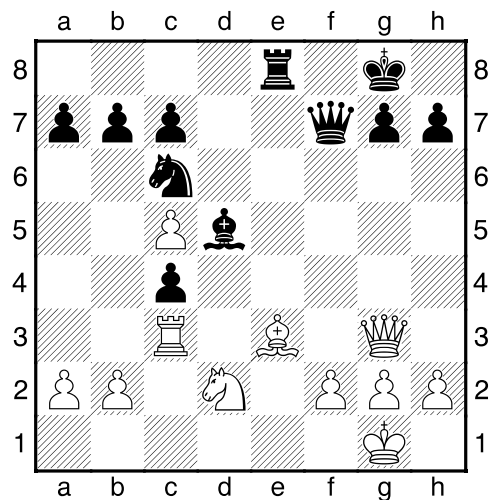
SCOTCH GAMBIT (C55)

White: Clemente Guizar (2373)

Black: Michael Millstone (2429)

9 PanAm Team Championship 2007

1.e4 e5 2.Nf3 Nc6 3.d4 exd4 4.Bc4 Bc5
5.c3 Nf6 6.0-0 Nxe4 7.cxd4 d5 8.dxc5
dxc4 9.Qe2 Qd3 10.Re1 f5 11.Nc3 0-0
12.Nxe4 fxe4 13.Qxe4 Bf5 14.Qh4 Rae8
15.Bf4 Re4 16.Re3 Rxe3 17.Bxe3 Be4
18.Nd2 Bd5 19.Rc1 Re8 20.Rc3 Qg6
21.Qg3 Qf7



22.a3 Ne5 23.Qh4 h6 24.Qd4 b5 25.f3
c6 26.Rc1 Qg6 27.Rf1 Nd3 28.Rb1 b4
29.h4 bxa3 30.bxa3 c3 31.h5 Qf5 32.Nf1
Ne5 33.Rb7 Qd3 34.Qb4 a5 35.Qf4 Bc4
36.Ng3 Nxf3+ 37.gxf3 Qxe3+ 38.Qxe3
Rxe3 39.Rb1 c2 40.Rc1 Rxf3 41.Kg2
Bd5 42.Nf1 a4 43.Kh2 Be4 44.Ng3
Rf2+ 45.Kh3 Bh7 46.Kh4 Bd3 47.Kg4
Kf7 48.Kh3 Ke6 49.Kg4 Kd5 50.Kh3
Kc4 51.Kg4 Kb3 52.Ra1 Bc4 53.Ne4
Rf1 54.Nd2+ Kb2 55.Rxf1 Bxf1
56.Nxf1 c1Q 0-1

The poor Black King is battered and chased through a center that grows increasingly occupied by White forces. Black should probably have resigned a dozen moves earlier.

SICILIAN DEFENSE (B80)

White: Michael Proof (2396)

Black: C. Sosa Patino (2483)

9 PanAm Team Championship 2007

1.e4 c5 2.Nf3 d6 3.d4 cxd4 4.Nxd4 Nf6
 5.Nc3 a6 6.Be3 e6 7.f3 Qc7 8.Qd2 Be7
 9.0–0–0 Nc6 10.g4 b5 11.a3 Bb7 12.h4
 Ne5 13.Rg1 Rc8 14.g5 Nfd7 15.h5 Nc4
 16.Bxc4 Qxc4 17.g6 fxg6 18.hxg6 hxg6
 19.Rxg6 Bf6 20.Qg2 Rh7 21.Qg3 Nf8
 22.Rg4 b4 23.axb4 Qxb4 24.Nde2 e5
 25.Bg5 Bxg5+ 26.Rxg5 Rc7 27.f4 Bxe4
 28.fxe5 d5 29.Nxe4 dxe4 30.e6 Rb7
 31.b3 Nxe6 32.Re5 Rh6 33.Nf4 Rd7
 34.Nd5 Qb5 35.Qg4 Qc6 36.Qxe4 Kd8
 37.Kb2 Nc7 38.Qb4 Nxd5 39.Qb8+ Qc8
 40.Re8+ Kxe8 41.Qxc8+ Rd8 42.Qg4
 Ne7 43.Qxg7 Rdd6 44.Rf1 Kd7 45.Rf8
 Rc6 46.Ra8 Rhe6 47.Qf7 Re2 48.Ra7+
 Kd6 49.Ka3 Rcxc2 50.Qf6+ Re6
 51.Qf4+ Kc6 52.Qd4 Rc3 53.Rxa6+
 Kb7 54.Rxe6 Rc7 55.Qb4+ Ka8
 56.Rxe7 Ra7+ 57.Kb2 Ra2+ 58.Kc3
 Rc2+ 59.Kd3 Rd2+ 60.Qxd2 Kb8
 61.Qh2+ 1–0

In a position strongly favoring White,
 Corky Schakel's opponent goes mad.

PONZIANI OPENING (C44)

White: Corky Schakel (2391)

Black: I. Akwei (2322)

9 PanAm Team Championship 2007

1.e4 e5 2.Nf3 Nc6 3.c3 d5 4.Qa4 Bd7
 5.exd5 Nd4 6.Qd1 Nxf3+ 7.Qxf3 Nf6 8.Bc4
 e4 9.Qe2 Bd6 10.d4 0–0 11.Bg5 h6 12.Bh4
 Re8 13.0–0 Bf4 14.Na3 a6 15.Bb3 b5
 16.Rfe1 Rb8 17.c4 c6 18.dxc6 Bxc6
 19.Rad1 bxc4 20.Nxc4 Bb5 21.d5 a5 22.Qc2
 Bxh2+ 23.Kxh2 Ng4+ 24.Kg3 1–0

An important part of playing at the top levels of international CC play is not to lose playing Black. That is not an easy task, but it is illustrated here by Board ! Ted Brandhorst who equalizes with deceptive ease against a Cuban ICCF Senior Master who is clearly after his scalp. After 16. ...Rad8 it is the Cuban who has to make sure not to lose playing White.

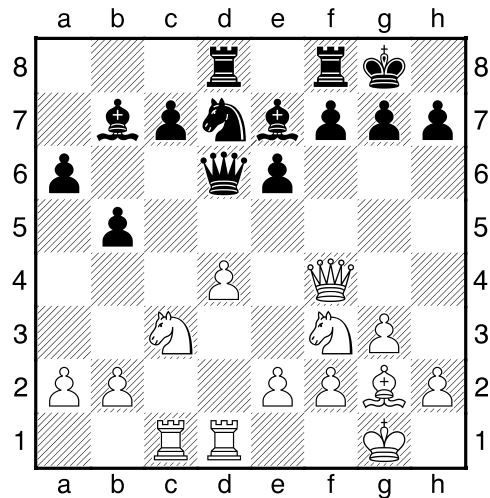
CATALAN OPENING (E05)

White: G. Santana Peñate (2590)

Black: Wesley Brandhorst (2477)

9 PanAm Team Championship 2007

1.d4 Nf6 2.c4 e6 3.Nf3 d5 4.g3 Be7
 5.Bg2 0–0 6.0–0 dxc4 7.Qc2 a6 8.Qxc4
 b5 9.Qc2 Bb7 10.Bd2 Be4 11.Qc1 Bb7
 12.Bf4 Nd5 13.Nc3 Nxf4 14.Qxf4 Qd6
 15.Rfd1 Nd7 16.Rac1 Rad8



17.Ne5 Bxg2 18.Kxg2 f5 19.Nd3 Qb6
 20.b4 Bd6 21.Qh4 Rfe8 22.e3 Nf6 23.a3
 Qc6+ 24.Kg1 Ng4 25.Qh3 e5 26.Ne2
 Qd5 27.dxe5 ½–½