



Check is in the Mail

by FIDE Master Alex Dunne

First Among Equals

Someone in the ICCF had a dream. Imagine a tournament where all the participants are world champions and you have imagined the ICCF 50 Years World Champions Jubilee Tournament. And now the dream has ended in a decisive victory. All the living correspondence world champions were invited to play, and they all came! In chronological order: V World Champion Hans Berliner (2763), VI Horst Rittner (2577), VIII Jorn Sloth (2605), IX Tonyu Oim (2610), X Victor Palciauskas (2558), XI Fritz Baumbach (2489), XII Grigory Sanakoev (2597), XIII Mikhail Umansky (2633), and XIV Gert Timmerman (2744).

It was a star-studded lineup indeed! The tournament started on July 1, 2001 and ended on December 24, 2004. It soon became clear who the winner would be. Mikhail Umansky finished his schedule early with a 7-1 score, dominating the event without a loss. It soon became clear that the real battle would be who would finish second. Our own Victor Palciauskas finished with two victories and an undefeated 5-3 score. Fritz Baumbach also managed a 5-3 score with a +3 =4 -1 result. That left the key game, Oim-Timmerman. If Timmerman could score the full point, he would move into undisputed second place. This was the last game to finish, and the result, a hard-fought draw, ended the dream tournament.

GAME OF THE MONTH

Umansky shows his tactical strength in this game, unleashing a combination that leaves White helpless against the advance of Black's king-side pawns.

PIRC'S DEFENSE [B06]

W: GM Grigory Sanakoev (2597)

B: GM Mikhail Umansky (2633)

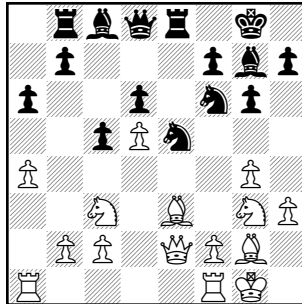
ICCF 50th Jubilee World Champions
Tournament E-mail, 2001

1 e4 g6 2 d4 Bg7 3 Nc3 d6 4 Be3 a6 5 a4 Nf6 6 h3 0-0 7 g4 White's play is quite provocative, claiming space on both wings while Black has a lead in development. Umansky's reply is right out of Nimzovich.

7...c5 8 d5 e6 9 Bg2 exd5 10 exd5 Nbd7 11 Nge2 Re8 12 Ng3 Ne5 13 0-0 Rb8 Black threatens to expand on the queenside. White plays a natural move to prevent this, but in

chess "natural" can sometimes be translated as "superficial."

14 Qe2?! (diagram)



after 14 Qe2!?

14...Nfxg4! Umansky's combination gives up a rook and two pieces for the queen but leaves Black with a winning long-range attack.

15 hxg4 Bxg4 16 Qd2 Nc4 17 Qc1 Nxe3 18 fxe3 Rxe3 19 Qxe3 Bd4 20 Qf2 f5 In the long run the white king will be helpless against the tsunami of black pawns.

21 Nge2 Bxe2 All pieces that could defend the white king are dispatched.

22 Nxe2 Bxf2+ 23 Rxf2 Qf6 24 c3 Re8 25 Nf4 Re3 26 a5 Qe5 27 Kf1 g5 28 Ne6 f4 29 Rd1 Qf5, 0-1.

• "I have sort of independently come to the conclusion that CC is about played out. Anyone who loses a game with White clearly does not know much about chess, how to use databases, or does not have a state of the art computer. So it comes down to the fact that you have to have a sound innovation over the books in every game you play (unless you are content to draw) which is essentially impossible." —Hans Berliner

• Once again it is time to honor the best in American correspondence chess. Dr. Ronald Hames offers a prize for the most beautiful correspondence game appearing in this column played by a Master and an equal prize for one played by a non-Master. This year in the non-Master category the nominees are Caliguire-Title, July 2004 and Long-Reyes, also July 2004. And the winner is John Caliguire.

In the Master division the nominees are Sergel-Jardorf, April 2004; Brooks-Arnold, May 2004; and Fleetwood-Dobsa, October 2004. The winner is Fleetwood-Dobsa. Congratulations, gentlemen!

• Palciauskas is a physicist. In this game he demonstrates how to transform momentum into mass.

RUY LOPEZ [C80]

W: GM Victor Palciauskas (2558)

B: GM Hans Berliner (2763)

ICCF 50th Jubilee World Champions
Tournament E-mail 2001

1 e4 e5 2 Nf3 Nc6 3 Bb5 a6 4 Ba4 Nf6 5 0-0 Nxe4 6 d4 exd4 7 Re1 d5 8 Bg5 Qd6 9 c4 dxc3 10 Nxc3 Be6 11 Nxe4 dxe4 12 Nd4 Qd5 13 Nxe6 fxe6 14 Qh5+ g6 15 Qh4 Bc5 16 Rad1 Qf5 17 g4 Bxf2+ 18 Qxf2 Qxg5 19 Rxe4 Qe7 20 Qf3 Rd8 21 Rxd8+ Qxd8 22 Bxc6+ bxc6 23 Rxe6+ Kd7 24 Qxc6+ Kc8 25 Qxa6+ Kb8 26 Re4 Qd1+ 27 Qf1 Rd8 28 Qxd1 Rxd1+ 29 Kf2 g5 30 Rb4+ Ka7 31 Rb3 c5 32 h3 c4 33 Ra3+ Kb6 34 Kc3 Rb1 35 Kd4 Rxb2 36 Kxc4 Rd2 37 Rb3+ Kc6 38 a3 Rd1 39 Rf3 Rd6 40 a4 Kb6 41 Rf5 Rh6 42 Rxg5 Rxh3 43 Rb5+ Ka6 44 Rh5 Rg3 45 g5 Rg1 46 Kd5 Rd1+ 47 Ke6, 1-0.

• After a 30-year absence from correspondence play, Hans Berliner shows he is a grandmaster of the e-mail game, too.

NIMZO-INDIAN DEFENSE [E30]

W: GM Hans Berliner (2763)

B: GM Jorn Sloth (2605)

ICCF 50th Jubilee World Champions
Tournament E-mail 2001

1 d4 e6 2 c4 Nf6 3 Nc3 Bb4 4 Bg5 c5 5 d5 d6 6 f3 h6 7 Bh4 0-0 8 e4 Re8 9 Qc2 exd5 10 cxd5 Nbd7 11 Bb5 Qa5 12 Bxd7 Nxd7 13 Nge2 c4 14 0-0 Bc5+ 15 Kh1 b5 16 a3 Rb8 17 f4 Qb6 18 Ng3 Nf8 19 f5 Nh7 20 Nh5 Bd7 21 Rae1 Bd4 22 Ne2 Be5 23 f6 g5 24 Bf2 Qc7 25 Bd4 Bg4 26 Bxe5 dxe5 27 Neg3 Rb6 28 Ng7 Rd8 29 Nf5 Rxf6 30 Qc3 Re8 31 h3 Bxf5 32 Nxf5 Qd7 33 b3 Nf8 34 bxc4 bxc4 35 Qxc4 Kh7 36 Ne3 Rb6 37 Rb1 Ng6 38 Rxb6 axb6 39 Qc6 Qxc6 40 dxc6 Ne7 41 Rxf7+ Kg6 42 Rxe7 Rxe7 43 Nd5 Kf7 44 c7, 1-0.

The final game of the tournament was a monumental struggle where both sides pushed their position to the limit.

SCOTCH GAME [C45]

W: GM Tonyu Oim (2610)

B: GM Gert Timmerman (2744)

ICCF 50th Jubilee World Champions
Tournament E-mail, 2001

1 e4 e5 2 Nf3 Nc6 3 d4 exd4 4 Nxd4 Bc5 5 Nb3 Bb6 6 Nc3 d6 7 a4 a6 8 Nd5 Ba7 9 Bg5 Qxg5 10 Nxc7+ Ke7 11 Nxa8 Ni6 12 Qd2 Qh4 13 Bd3 Nxe4 14 Bxe4 Qxe4+

15 Qe2 Qxe2+ 16 Kxe2 Bf5 17 Nc7 Bxc2 18 Nc1 Be4 19 Re1 Bxg2 20 Nb5 Bb6 21 Rg1 Bd5 22 Nc3 Bc4+ 23 Kf3 Nd4+ 24 Kg2 Nc2 25 Rb1 Kd7 26 Rd1 Nb4 27 Rd2 f6 28 N1e2 Re8 29 Ng3 Bb3 30 Nf5 Bc5 31 Nd4 Bc4 32 Rbd1 Kc7 33 Nf5 Bb3 34 Rc1 Nc6 35 Rd3 g6 36 Ne3 Kb8 37 Ned5 Bd4 38 Nf4 Be5 39 Nfd5 g5 40 Rh3 Ne7 41 Nb6 Ka7 42 a5 Bg8 43 Rd1 Ng6 44 Kf1 Nf4 45 Rh6 Bb3 46 Rd2 Be6 47 f3 d5 48 Rxb7 d4 49 Ne4 Bf5 50 Rh6 Bh3+ 51 Kf2 d3 52 Kg3 Be6 53 Kf2 Bd4+ 54 Kf1 Be3 55 Rxd3 Nxd3 56 Ke2 Bc1 57 Kxd3 Bxb2 58 Nxf6 Bf5+ 59 Kc4 Re3 60 h4 gxh4 61 Nfd5 Ra3 62 Rd6 Rxa5 63 Rds Rxd5 64 Nxd5 h3 65 Nc3 Be6+ 66 Kd3 b5 67 Rd4 Bf5+ 68 Kd2 Ba3 69 Rh4 Bd6 70 Ne2 Kb6 71 Nd4 Bd7 72 Rh7 Bc8 73 Ke3 Kc5 74 Rh8 Bd7 75 Rh7 Bc8 76 Rh8 Bd7 77 Rh7 h2 78 f4 Kc4 79 Nf3 Kc3 80 Rxh2 Bc5+ 81 Ke2 b4 82 Nd2 Bg4+ 83 Ke1 Be3 84 Rg2 Bxd2+ 85 Rxd2 b3 86 Rd6 a5 87 Rc6+ Kd3 88 Rd6+ Kc2 89

Rc6+ Kd3 90 Rd6+ Kc3 91 Rc6+ Kd3, 1/2-1/2.

• Here are the two Hames prize winners:

NIMZO-INDIAN DEFENSE [E41]
W: John Caliguire (1992)
B: R. Title (2429) 2 eUSCCC, 2003

1 d4 Nf6 2 c4 e6 3 Nc3 Bb4 4 e3 c5 5 Bd3 Nc6 6 Nf3 Bxc3+ 7 bxc3 d6 8 e4 e5 9 d5 Ne7 10 Rb1 Ng6 11 0-0 0-0 12 Ne1 h6 13 Bd2 Rb8 14 Rb2 Qd7 15 Qf3 Qa4 16 Nc2 Bg4 17 Qg3 Bd7 18 Rfb1 Nh5 19 Qf3 Nhf4 20 Bf1 f5 21 Ne3 fxe4 22 Qxe4 Nh4 23 Rxb7 Rxb7 24 Rxb7 Qxa2 25 Qc2 Qxc2 26 Nxc2 Nh3+ 27 gxh3 Nf3+ 28 Kg2 Bc8 29 Rxa7 Nxd2 30 Bd3 Bxh3+ 31 Kxh3 Rf3+ 32 Kg4 Rxd3 33 Ne3 Rxc3 34 Kf5 Nxc4 35 Kg6 Kf8 36 Nf5 Ke8 37 Kxg7 Rc1 38 Kf6 Rg1 39 Ne7 Nb6 40

Ke6, 1-0.

RUY LOPEZ [C95]
W: Dan Fleetwood (2495)
B: S. Dobsa (2322) 13th Olympiad, 1998

1 e4 e5 2 Nf3 Nc6 3 Bb5 a6 4 Ba4 Nf6 5 0-0 Be7 6 Re1 b5 7 Bb3 d6 8 c3 0-0 9 h3 Nb8 10 d4 Nbd7 11 Nbd2 Bb7 12 Bc2 Re8 13 Nf1 Bf8 14 Ng3 g6 15 a4 c5 16 d5 Nb6 17 Qe2 Nxa4 18 Bxa4 bxa4 19 Rxa4 Bc8 20 Bg5 h6 21 Be3 Rb8 22 Qc2 Nd7 23 Nd2 Nb6 24 Ra3 Qc7 25 c4 Bg7 26 Rb1 Nd7 27 Nb3 Nf8 28 Nc1 Qd7 29 Bd2 f5 30 b4 f4 31 Nf1 cxb4 32 Rxb4 Qc7 33 Nd3 Nd7 34 Rxb8 Qxb8 35 Ba5 Qa7 36 Nd2 Bf8 37 Qa4 g5 38 c5! dxc5 39 Qc6! Bg7 40 Rb3! Rf8 41 Nc4 Bf6 42 Nd6 Nb8 43 Qxc5 Qxc5 44 Nxc5 Be7 45 Bc7 Nd7 46 Ne6, 1-0.

ICCF WORLD CHAMPIONS JUBILEE TOURNAMENT

	1	2	3	4	5	6	7	8	9
Mikhail Umansky	X	1/2	1/2	1	1	1	1	1	1
Victor Palciauskas	1/2	X	1/2	1/2	1/2	1	1/2	1/2	1
Gert Timmerman	1/2	1/2	X	1/2	1/2	1	1	1/2	1
Fritz Baumbach	0	1/2	1/2	X	1	1/2	1/2	1	1
Tonyu Oim	0	1/2	1/2	0	X	1/2	1/2	1	1
Hans Berliner	0	0	1/2	1/2	1/2	X	1/2	1	1/2
Horst Rittner	0	1/2	0	1/2	1/2	1/2	X	0	1
Jorn Sloth	0	1/2	1/2	0	0	0	1	X	1/2
Grigory Sanakoev	0	0	0	0	0	1/2	0	1/2	X

CORRESPONDENCE CHESS PLAYERS

You are invited to send me your comments, questions and correspondence games (with or without annotation). Because of the volume of mail, submissions cannot be returned, and personal replies are not possible. Send letters to: Alex Dunne, Chess Life, 3068 US Route 9W, Suite 100, New Windsor, NY 12553 or e-mail: alex.dunne@cqservices.com

CHECK OUT USCF'S CORRESPONDENCE CHESS RATED EVENTS

USCF's 58th ANNUAL

2005 Open Correspondence Chess Golden Knights Championship

\$1,500 First Prize

(plus title of USCF's Golden Knights Champion and plaque)

• 2nd place \$800 • 3rd place \$600 • 4th place \$400 • 5th place \$200 • 6th thru 10th place \$100 each. Entry fee: \$25.

The entry deadline is November 30, 2005.

These USCF Correspondence Chess events are rated and open to all USCF members who reside on the North American continent, islands, or Hawaii, as well as those USCF members with an APO or FPO address. USCF members who reside outside of the North American continent are welcome to participate in e-mail events. Your USCF membership must remain current for the duration of the event, and entry fees must be paid in U.S. dollars. Those new to USCF Correspondence Chess, please estimate your strength: **Class A:** 1800-1999 (very strong); **Class B:** 1600-1799 (strong); **Class C:** 1400-1599 (intermediate); **Class D:** 1399 and below (beginner level). **Note:** Prize fund guaranteed (based on 400 entries) and will be increased or decreased proportionately per number of entries assigned.

CORRESPONDENCE CHESS MATCHES (TWO PLAYERS)

* \$5 entry fee per person with two, four or six game options.

WIN A CORRESPONDENCE CHESS TROPHY

* Four-player, double round-robin with class-level pairings. * 1st place winner receives a trophy. * Entry fee: \$10.

VICTOR PALCIAUSKAS PRIZE TOURNAMENTS

* Seven-player class-level pairings, one game with each of six opponents. * Players must have a USCF CC rating to enter. * 1st-place winner receives \$130 cash prize and a certificate signed by Victor Palciauskas. * Entry fee: \$25.

JOHN W. COLLINS MEMORIAL CLASS TOURNAMENTS

* Four-player, double round-robin with class-level pairings (unrateds welcome). * 1st-place winner receives a John W. Collins certificate. * Entry fee: \$7.

E-MAIL RATED EVENTS (NEED E-MAIL ACCESS):

LIGHTNING MATCH * Two players with two, four or six game option. * Entry fee \$5 per person.

Swift Quads * Four-player, double round-robin format. * 1st-place prize merchandise credit of \$30. * Entry fee: \$10.

Express Tournament * Seven-player events, one game with each of six opponents. * Prizes: 1st place \$30 merchandise credit, 2nd place \$20 credit. * Entry fee: \$15.

Express Tournament

* Seven-player events, one game with each of six opponents. * Prizes: 1st place \$30 merchandise credit, 2nd place \$20 credit. * Entry fee: \$15.

Please circle event(s) selected.



U.S. Chess Federation
www.uschess.org



USCF's 2nd ANNUAL

2005 E-mail Correspondence Chess

Electronic Knights Championship

(Seven-player sections, one game with each of six opponents.)

\$1,500 First Prize

(plus title of USCF's Electronic Knights Champion and plaque)

• 2nd place \$800 • 3rd place \$600 • 4th place \$400 • 5th place \$200 • 6th thru 10th place \$100 each. Entry fee: \$25.

The entry deadline is November 30, 2005.

These USCF Correspondence Chess events are rated and open to all USCF members with e-mail access. Your USCF membership must remain current for the duration of the event, and entry fees must be paid in U.S. dollars. Maximum number of tournament entries allowed for the year for each player is ten.

Note: Prize fund guaranteed (based on 400 entries) and will be increased or decreased proportionately per number of entries assigned.

NOTE: Except for Lightning Matches, Swift Quads and Express Tournaments, players will use post office mail, unless opponents agree to use e-mail.

To ENTER: 800-388-KING (5464) FAX 845-561-CHES (2437)

Name _____
USCF ID# _____
Address _____ City _____
State _____ ZIP _____ Phone _____
E-mail _____
Credit card # (VISA, MC, Discover, AMEX) _____
Exp. date _____ If using VISA, need V-code _____
 Check here if you do not wish to have an opponent who is incarcerated.
Make checks payable to U.S. Chess and mail to:
3068 US Rt. 9W, Suite 100, New Windsor, NY 12553