



## The Check Is in the Mail

June 2007

### NOTICE:

I will be out of the office from June 16 through June 25 to teach at Castle Chess Camp in Atlanta, Georgia. During that time I will be unable to answer any of your email, US mail, telephone calls, or any other form of communication.

### NOTICE #2

The email address for USCF correspondence chess matters has changed to [chesskinetics@stny.rr.com](mailto:chesskinetics@stny.rr.com)

### ICCF GRANDMASTER in 2006 ELECTRONIC KNIGHTS

Cesar Augusto Blanco-Gramajo, born January 14, 1959, is a Guatemalan ICCF Grandmaster now living in the US and participating in the 2006 Electronic Knights. Cesar has had an active career in ICCF (playing over 800 games there) and sports a 2562 ICCF rating along with the GM title which was awarded to him at the ICCF Congress in Ostrava in 2003. He took part in the great Rest of the World vs. Russia match, holding down Eleventh Board and making two draws against his Russian opponent. I wish both Cesar and US players opposing him much skill. Cesar's presence can only raise the level of American correspondence chess.



**GM Cesar Augusto Blanco-Gramajo**

### GAME OF THE MONTH

Cesar's provisional USCF rating is 2463. As you watch this game unfold, you can almost see Blanco's rating go upwards.

RUY LOPEZ (C67)

White: Cesar Blanco (2463)

Black: Benjamin Coraretti (0000)

2006 Electronic Knights

**1.e4 e5 2.Nf3 Nc6 3.Bb5 Nf6 4.0-0 Nxe4 5.d4 Nd6 6.Bxc6 dxc6 7.dxe5 Ne4**

An unusual sideline that seems to be gaining in popularity lately.

**8.Qe2**

White chooses to play the middlegame as opposed to the endgame after 8. Qxd8+. With an unstable Black Knight and quick occupancy of the d-file, kingside space, and a lead in development, this seems to be the best choice. Still in my postal database, 8. Qxd8+ has scored +3 -1 =1. The other alternative is 8. Be3 which is typically met by 8...Bc5 when Black's two Bishops go. White does well here, too.

### 8...Bf5 9.Rd1 Qe7?!

Apparently an innovation. Voyna-DeMauro, Mate Postal 25 saw the GM approach with 9...Qc8 10. h3 Be7 11. Be3 Qe6 12. Nbd2 Qg6 with equal play.

### 10.Na3

White avoids exchanging off the shaky e4 Knight and heads toward the weakest square in Black's camp -- b7

### 10...h6

Black is too ambitious, trying to preserve his Bishop pair, but White's lead in development is getting dangerous. Black had to try 10...Qe6 11. Nd4 Qg6 12. Nxf5 Qxf5 13. Rd4! Bxa3 14. Rxe4 with an endgame edge to White.

### 11.Nc4 g5

Black refuses to defend -- a commendable attitude -- but after White's next all Black can do is defend.

### 12.Na5! Qb4

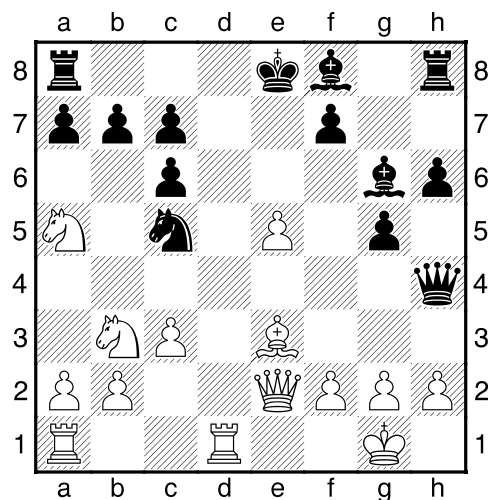
Retreat by ...Nc5 solves only the problem of b7, but not the other problems overwhelming Black's game.

### 13.Nd4 Bg6 14.Ndb3 Nc5

After 14...Bc5, the clear answer is 15. Be3 with advantage.

### 15.c3 Qh4 16.Be3

White has won the battle of the opening: Black's game is in disarray. Now 16...Nxb3 only benefits White after 17. axb3



### 16...Ne6 17.Nxb7 Bh5 18.Qa6!

Now White chooses not to defend, and with his solid development, he can afford not to. White could also have played 18. f3, but this is crushing.

### 18...Be7 19.Qxc6+ Kf8 20.Rd7 Re8 21.N7c5

White's pieces soon turn the center completely white.

### 21...Nf4 22.Bxf4 gxf4 23.Nd4 Qg5 24.Nce6+ 1-0

## CLASSIFIED ADS

LEARN CHESS BY MAIL ! Lessons given by mail, telephone, ICC – many different ways. I specialize in players rated 800-2100 who would like to improve their game. Contact me for information. Alex Dunne, 324 West Lockhart St., Sayre, PA 18840 or [alex.dunne@stny.rr.com](mailto:alex.dunne@stny.rr.com)

## VICTOR PALCIAUSKAS WINNER

William Schlifke of Wilmington, Delaware eked out a victory in a strong field of five Masters and two Experts in the 2004 Victor Palciauskas Tournament 04UM05.

Schlifke was the only undefeated player in the tournament. His nearest rival, Thomas Langland, finished second with 4-2.

I asked William for a game that would reflect his play in the tournament, but he declined to send an example. Consulting my database, the best I could come up with is this draw by correspondence against GM Arthur Bisguier. It seems a shame to let this talented Master not have a representative game from this tourney. Anyone out there have one?

### BIRD'S OPENING (A03)

White: William Schlifke  
Black: Arthur Bisguier  
Correspondence 1993

1.f4 d5 2.Nf3 Nf6 3.g3 c5 4.Bg2 Nc6 5.0-0 g6 6.d3 Bg7 7.Nc3 0-0 8.e4 d4 9.Ne2 Bg4 10.h3 Bxf3 11.Bxf3 e5 12.fxe5 Nxe5 13.Bg2 Rc8 14.Nf4 Qd6 15.Nd5 Nxd5 16.exd5 c4 17.Bf4 Qc5 18.Re1 f6 19.dxc4 Nxc4 20.b4 Qxb4 21.Rb1 Qc5 22.Rxb7 Ne5 23.Kh1 Rf7 24.Rxf7 Kxf7 25.Bxe5 fxe5 26.Rf1+ Kg8 27.Be4 ½-½

Levine	2383	█	=	0	=	1	=	1	3 1/2-2 1/2
Schlifke	2333	=	█	=	1	1	=	1	4 1/2-1 1/2
Gach	2226	1	=	█	0	1	0	=	3-3
Saslowsky	2203	=	0	1	█	1	0	1	3 1/2-2 1/2
Stewart	2171	0	0	0	█	0	1	1	1-5
Langland	2214	=	=	1	1	1	█	0F	4-2
Soricelli	2139	0	0	=	0	0	1F	█	1 1/2-4 1/2

## MAY TOURNAMENT WINNERS

### JOHN COLLINS

Emanuel Chosak 05CB25 6-0  
Raymond Birt 05CA26 6-0  
Charles Hiber 05C35 4 ½-1½

### VICTOR PALCIAUSKAS

William Schlifke 04UM05 4 ½-1½

### WALTER MUIR

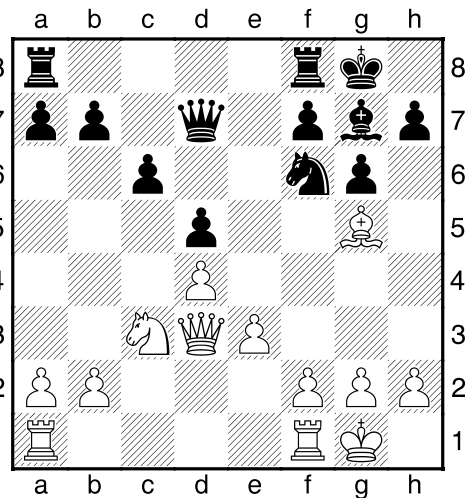
William Evans 07W04 6-0

### WATCH THAT b-PAWN !

### QUEEN'S GAMBIT DECLINED (D35)

White: Mikhail Botvinnik  
Black: Max Euwe  
Hague/Moscow 1948

1.d4 d5 2.Nf3 Nf6 3.c4 e6 4.cxd5 exd5 5.Nc3 c6 6.Qc2 g6 7.Bg5 Bg7 8.e3 Bf5 9.Bd3 Bxd3 10.Qxd3 0-0 11.0-0 Nbd7 12.Ne5 Qe8 13.Nxd7 Qxd7



14.b4 Rfe8 ½-½

In the 1948 match tournament which was to decide the world champion, following Alekhine's death. Botvinnik needed only a draw to secure the crown, he offered it after moving 14. b4, a final Pawn move. At first Euwe refused, but then relented and agreed to the draw. It wasn't until some time later that the film crew noticed that they had failed to "epochalize" the moment in which Botvinnik had played his last move, 14. b4, the move that brought the Soviet Union the title of World Champion. Noticing that the wallboard monitor had the same color suit as Botvinnik, they pressed him into service. The newsreel viewers never suspected that the "historic move" b2-b4 was made, not by the champion's hand, but the wallboy's. Nor does the b-Pawn's story end here. Elizaveta Bykova took it home, as a talisman, on the belief that the Pawn would help her become women's world champion. And so it did! And, as a final note: the humble wallboy who touched this truly "miraculous" Pawn, was Jacob Estrin, who became the 7th World Correspondence Champion.

-- paraphrased from Women in Chess by John Graham

**Quote:** Correspondence chess fits more easily into most people's lifestyle than OTB chess. -- Allan Savage

## **ERRATA**

GM Ian Brooks pointed out that in the Simon Webb Memorial, all thirteen participants are Grandmasters, John Pugh having received his title at the ICCF Dresden Congress.

## **LETTER TO THE EDITOR**

### **FOR THE FUTURE OF CORRESPONDENCE CHESS WITHIN THE USCF, ELECT GM SUSAN POLGAR, FM PAUL TRUONG, FM STEPHEN JONES. AND JIM BERRY TO THE USCF EXECUTIVE BOARD.**

Unsolicited Endorsement by Franklin Castle

Those of us who have a passion for correspondence chess desperately need to make our voices heard in the upcoming elections for USCF executive board members. As some of you know, I have openly endorsed GM Susan Polgar, FM Paul Truong, and FM Stephen Jones. These candidates, as I have mentioned in my previous flyer, either play correspondence chess or are openly committed to promoting CC within the USCF.

In my previous flyer, I mentioned that Susan's openness to correspondence chess was evidenced by her hiring CC Master Stephan Gerzadowicz to manage and teach chess at the Polgar Chess Center in New York. I sent a copy of that flyer to Stephan, and he responded by strongly urging that we also consider voting for Jim Berry as well. According to Stephan, Jim is a friend and PATRON of Susan's in addition to being a correspondence chess player. Stephan believes that Jim, an all-around great guy, would be a very good board member.

For her part, Susan is recommending,, in addition to Paul, whom I also support, Mikhail Korenman and Randy Bauer. I have no reason to doubt that Mikhail and Randy are great leaders who would serve

the Federation well as executive board members, but I am not sure just where they stand on actively promoting and elevating the status of CC within the USCF. By contrast, Stephen [Jones], a two-time US Correspondence Championship winner and Jim are CC players who, it is safe to assume, would advance CC within the USCF if elected to the executive board. Susan, in her candidate statement in the May 2007 issue of Chess Life, states that she is recommending Randy because of his “financial expertise” as budget director for the state of Iowa. But we need to keep in mind that Jim not only has “financial expertise” (he sits on the board of directors for a bank with \$2 billion in assets) but, according to Stephan, he plays correspondence chess. If we are to reverse the decline of correspondence chess within the USCF, then we have need to elect people to the executive board who support and have a passion for the sport like we do. For the foregoing reasons, and in the interest of elevating the status of CC within the USCF, I’m writing all of my USCF opponents to urge that you join me in voting for GM Susan Polgar, FM Paul Truong, FM Stephen Jones, and Jim Berry to serve as USCF executive board officers.

Thank you, Franklin Castle

### WEB WATCH

The website [www.chessgames.com](http://www.chessgames.com) has recently been featuring some interesting correspondence challenges against its membership. The first saw Arno Nickel, the vanquisher of the computer Hydra, playing Black against the voting Chessgames players. Here is the victorious World’s win.

### SICILIAN DEFENSE (B42)

White: The World  
Black: Arno Nickel  
Chessgames, 2007

1.e4 c5 2.Nf3 e6 3.d4 cxd4 4.Nxd4 a6  
5.Bd3 Bc5 6.Nb3 Be7 7.Qg4 g6 8.Qe2  
d6 9.0-0 Nd7 10.a4 Ne5 11.a5 Nf6  
12.Be3 0-0 13.Nc3 Bd7 14.f4 Nxd3  
15.cxd3 Bc6 16.f5 exf5 17.exf5 Qd7  
18.Qd2 Rfe8 19.Bb6 Ng4 20.Nd4 Bf8  
21.Qf4 Ne5 22.Nxc6 bxc6 23.d4 Nd3  
24.Qd2 Nb4 25.Rf3 Nd5 26.Nxd5 cxd5  
27.Raf1 Rac8 28.h3 Bg7 29.Kh2 Qb5  
30.fxg6 fxg6 31.Qg5 Re4 32.Bd8 Re6  
33.Bf6 Rf8 34.Bxg7 Rxf3 35.Rxf3 Kxg7  
36.b4 h5 37.Qd8 Qe8 38.Qb6 Qc8 39.b5  
axb5 40.a6 Re1 41.Qb7+ 1-0

After that game, Chessgames acquired the formidable talents of GM Yuri Shulman, the former US Open Champion, to play against their membership. That game is currently ongoing. Interested parties can click their mouse to see the current position. Beginning on August, 15<sup>th</sup> World Champion (1996-2002) Gert Jan Timmerman will be the next player to fight the world. Timmerman will play the Black pieces at a time limit of three days per move. A sign-up page will be open to anyone interested in June. Finally, Arno Nickel wants his revenge. Sometime late in 2007 or early 2008, Chessgames will sponsor a rematch of their membership against Nickel.

Those of you who like the idea of many heads being better than one, should check into this website.

Two other features of the site that are attractive are 1) Guess-the-Move. Normally available only to members, there are three demonstration games available. One of the games is Tal-Lutikov, 1964. In this demonstration, you are invited to see if you can guess

the moves Tal played. You are encouraged to take your time, as this is a teaching device. When you have entered a move, the chess engine Toga will evaluate your choice and award bonus points as appropriate. Most of the moves receive three points. When I tried to play some truly awful move, I received no points and a you-lose message. It was more fun than tutelage, but the games are great! Finally there is a database of 400,000+ games that you can search in many different categories.

This looks like a fun place to go to – [www.chessgames.com](http://www.chessgames.com)

Ever have one of those games where sacrifice you tried was frustrated by the opponent? Both sides must have felt that way in the following game.

#### GRUNFELD DEFENSE (D85)

White: Boris Ratner (2407)

Black: Lawrence Coplin (2392)

2005 Absolute, 2007

1.d4 Nf6 2.c4 g6 3.Nc3 d5 4.cxd5 Nxd5 5.e4 Nxc3 6.bxc3 Bg7 7.Nf3 c5 8.Bb5+ Nc6 9.0-0 0-0 10.Be3 Bg4 11.d5 Ne5 12.Be2 Nxf3+ 13.Bxf3 Bxf3 14.Qxf3 Qa5 15.Rac1 b6 16.Bg5 f6 17.Bf4 Qxa2 18.h4 e5 19.Bg3 Qc4 20.h5 gxh5 21.Qf5 b5 22.Rfe1 a5 23.f4 Rae8 24.fxe5 h4 25.Bxh4 Rxe5 26.Qf3 f5 27.d6 Qe6 28.Rcd1 Qd7 29.exf5 Rxe1+ 30.Bxe1 Rxf5 31.Qa8+ ½-½

When Black defends his shattered queenside, White shatters his vulnerable kingside.

#### DUTCH DEFENSE (A81)

White: Dennis Michael (1517)

Black: Bernard Miller (1890)

2004 Electronic Knights Semifinal 2007

1.d4 f5 2.g3 Nf6 3.Bg2 d6 4.Nf3 c6 5.0-0 Qc7 6.Nbd2 g6 7.Re1 Bg7 8.e4 fxe4 9.Nxe4 Nxe4 10.Rxe4 Bf5 11.Re1 0-0 12.c3 Re8 13.Ng5 h6 14.Ne6 Qd7 15.d5 Na6 16.Nxg7 Kxg7 17.Qd4+ Kh7 18.dxc6 bxc6 19.Qh4 Nb8 20.Qxh6+ Kg8 21.g4 Bd3 22.Bg5 Qxg4 23.Bf6 1-0

Iowa Correspondence champion John Knudsen shows his form in this mid-west melee.

#### NIMZOINDIAN DEFENSE (E32)

White: Craig Brophy (1784)

Black: John Knudsen (2350)

2006 Iowa Championship 2006

1.d4 Nf6 2.c4 e6 3.Nc3 Bb4 4.Qc2 0-0 5.e4 d5 6.e5 Ne4 7.a3 Bxc3+ 8.bxc3 c5 9.Bd3 Nc6 10.Ne2 cxd4 11.cxd4 Qa5+ 12.Kf1 f5 13.Rb1 Qd8 14.cxd5 exd5 15.g3 f4 16.Bxf4 Bh3+ 17.Kg1 Rc8 18.Qb2 g5 19.Be3 Na5 20.Qa2 Nc4 21.Rc1 Nxe3 22.Rxc8 Qxc8 23.Bxe4 Kh8 24.f4 gxf4 25.Kf2 dxe4 26.gxf4 Nc2 27.Rg1 e3+ 28.Kf3 Qf5 29.Rg5 Qd3 30.Qd5 Bf1 0-1