



The Check Is in the Mail

July 2008

DAVID MEYERS = IM



David Meyers was awarded the title of International Correspondence Chess Master at the Mumbai Convention in October 2007.

David is presently playing in the 22nd World Championship Final which began on the last day of 2007. David has quite a challenge before him as the lowest rated in the event, but he philosophically shrugs it off saying that any result other than dead last will be a triumph.

David will also be playing in the North American Invitational Championship

which begins on 1 July. David was pleased with this invitation as he has admired the many interesting games played by strong Americans in previous editions of this event.

GAME OF THE MONTH

There is a pleasing geometry of the heavy pieces at the conclusion of this game that would have made Euclid smile.

ENGLISH OPENING (A29)

White: Denis Kovalyev (2474)

Black: David Myers (2300)

28th WORLD CHAMPIONSHIP

SEMIFINALS

2004

**1.c4 e5 2.Nc3 Nf6 3.g3 d5 4.cxd5 Nxd5
5.Bg2 Nb6 6.Nf3 Nc6 7.0-0 Be7 8.Rb1
a5 9.d3 0-0 10.Be3 Be6 11.a3**

Weaker is 11. Bxb6 cxb6 12. Rc1 f5 13. a4 as in Kaufmann-Kulczycki, Corres. 2003, drawn shortly.

11...Nd5

An Italian postal game Vasto-Miotto, Corres. 1995 continued 11...f6 12. Rc1 Nxd5 13. Nxd5 Bxd5 14. Bc5. Myers' choice is more classical.

12.Nxd5 Bxd5 13.Qa4 Qc8

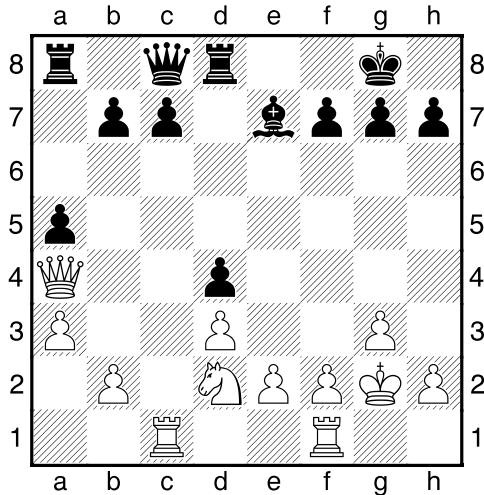
Myers is cautious here, keeping b7 safe against a Qb5 excursion. An argument could be made for ...f5 here, but Myers does not allow White chances for the initiative.

14.Rbc1

This repositioning of the Rook costs White a whole tempo in an even

position, an indication that he has misplayed the opening.

14...Rd8 15.Nd2 Bxg2 16.Kxg2 Nd4 17.Bxd4 exd4



The course of the game is now clear: Black has a queenside Pawn majority (3 vs. 2) and a Bishop against the Knight and center majority. This setup favors Black as the Bishop will be better in the endgame, as will the queenside majority. The two to one center favors the attacker, but White has exchanged off three pairs of pieces, thus diminishing his attacking chances. Black stands better here.

18.Qc4 c6 19.e4 a4

Nailing down White's a3 and b2 Pawns as potential targets for the Bishop.

20.Nf3 Qd7 21.Ne5 Qe8 22.f4 c5 23.Qc2 b5

Both sides play where their strength lies, but Black keeps his edge as the Knight cannot stay on e5.

24.Rfd1 Rac8 25.Nf3 Qd7 26.b3?!

This is an act of desperation, violating a fundamental rule of defense: Do not open up lines on the side where you are being attacked. What else could White do ? Given enough time he might get back in the game with e5, Nd2-e4, Qe2 and slide the Rooks over to f1 and e1, but that would require Black not making any moves for a long time.

26...axb3 27.Qxb3 Ra8 28.Rb1 Ra5! 29.Rd2 Qe8 30.Rdb2 h5!

A brilliant choice -- with all White's heavy pieces tied up doing nothing on the queenside, Black begins probing the kingside for weaknesses.

31.h3 h4! 32.gxh4 c4!

Black's strategy is highlighted by his tactics. White's game is collapsing as his King comes under fire.

33.dxc4 Bxa3 34.Re2

Else ...Qxe4 comes

34...bxc4 35.Qxc4 Rc5 36.Qa6 Bc1 37.Qa7 Rc3 38.Rxc1

After 38. Nxd4 Be3 leads to a similar conclusion.

38...Rxc1 39.Nxd4 Ra8 40.Qb7 Rb8 41.Qa7 Rb4

Material is somewhat even, but White's King has a target around his neck.

42.Nf5

A last trap -- 42...Rxe4? 43. Ne7+! but now Black's Queen enters the fight and it is soon over.

42...Qb5! 43.Qf2 Qd3 44.Ng3 Rb3
45.Rd2 Qb1 46.Kh2 Rxc3 0-1

White has no good reply -- 47. Qxc3 Rh1+ 49. Kg2 Qf1 mate or 47. Kxc3 Rg1+ Now 48. Kf3 is met by 48. Rf1 and 48. Kh2 Rh1+ gives two choices -- 49. Kg2 Qxe4+ or 49. Kg3 Qb3+ with mate to follow in both cases.

JUNE WINNERS

WALTER MUIR

Alexander Traxler 08W10 6-0
John Wilhelm 07W31 5-1
Robert Teufel 07W51 5 ½-½
Joe Hoffmann 08W01 5 ½-½

JOHN COLLINS

Geoffrey Love 06C27 4 ½-1 ½
Paul Ott 06C01 6-0
Richard Kuhn 07C49 6-0

EXPRESS TOURNAMENT

Timothy Harris 07ET07 4 ½-1 ½
John Ballow 07ET07 4 ½-1 ½

TROPHY QUAD

Mike Donnelly 07Q24 6-0
Allen Woollen 05Q27 4 ½-1 ½

HARRIS and BALLOW TIE 07ET07

Despite a horrific ski accident that knocked him out of commission for weeks and led to a forfeit loss in this section, Tim Harris came back to tie John Ballow for first place in Express Tournament 07ET07.

Harris	2284		F	=	1	1	1	1	4.5
Ballow	2160	1		=	=	1	=	1	4.5
Kain	2167	=	=		=	1	=	1	4
Tremblay	2151	0	=	=		0	1	1	3
Hensley	2063	0	0	0	1		1	1	3
White	0000	0	=	=	0	0		1	2
Garbera	2036	0	0	0	0	0	0		0

CARO-KANN DEFENSE (B12)

White: Timothy Harris (2284)

Black: B. Garbera (2036)

2007 Express Tournament

1.e4 c6 2.d4 d5 3.e5 Bf5 4.Nf3 e6 5.Be2 Nd7 6.0-0 Ne7 7.Nc3 c5 8.Bg5 a6 9.dxc5 Nxc5 10.Nd4 Bg6 11.Re1 Qc7 12.h4 h6 13.Be3 Nf5 14.Nxf5 Bxf5 15.Qd4 Nd7 16.Bg4 Bc5 17.Qa4 Bxg4 18.Qxc5 0-0-0 19.Bxc5 Nxc5 20.Qxc7 Rdg8 21.Qf6 Rh7 22.Nxd5 exd5 23.Qf5+ Qd7 24.Qxh7 Qg4 25.g3 Ne6 26.Rad1 Rg7 27.Qd3 Nf4 28.Qe3 Qxh4 29.Qc3+ Kb8 30.e6 Qh3 31.Qe5+ 1-0

White steals a faraway Pawn on a5 and finds his pieces too far from the action

BENONI GAME (A70)

White: Michael Hensley (2063)

Black: John Ballow (2176)

Express Tournament 2007

1.c4 Nf6 2.d4 c5 3.d5 d6 4.Nc3 g6 5.e4 Bg7 6.Nf3 0-0 7.h3 e6 8.Bd3 exd5 9.cxd5 a6 10.a4 Nbd7 11.0-0 Qe7 12.Bf4 Nh5 13.Bh2 Bh6 14.Ne2 Re8 15.a5 Rb8 16.Ra3 b5 17.axb6 Rxb6 18.Rb3 Rb4 19.g4 Qf6 20.Kg2 Rxb3 21.Qxb3 Nf4+ 22.Nxf4 Bxf4 23.Bg3 Bxg3 24.fxg3 h6 25.Nd2 Qd4 26.Nc4 Ne5 27.Nxe5 Qxe5 28.Qc3 Kg7 29.Kf3 Qxc3 30.bxc3 Re7 31.Ra1 Kf6 32.Kf4 g5+ 33.Ke3 Ra7 34.Ra5 Ra8 35.Ra4 a5 36.Bb5 Ke7 37.Kd3 Bd7 38.Kc4 Kd8 39.Bxd7 Kxd7 40.h4 Ra7 41.h5 Kc7 42.Kb5 Rb7+ 43.Kxa5 Kd7 44.Rc4 Rb2 45.Ka4 Ke7 46.e5 Rd2 47.Kb5 Rxd5 48.exd6+ Kxd6 49.Ra4 Rd3 50.Ra6+ Ke5 51.Rxh6 Rxc3 52.Rc6 Rb3+ 53.Ka5 Kd4 54.Rd6+ Ke4 55.Rd7 Rxg3 56.Re7+ Kf4 57.h6 Kxg4 58.h7 Rh3 59.Rxf7 Kg3 60.Rb7 Rh5 61.Kb5 g4 62.Kc4 Kh3 63.Rb1 Kg2 64.Rb2+ Kf3 65.Rb3+ Kf4 66.Rb8 Rxh7 67.Rf8+ Kg3 68.Rg8 Kh3 69.Kxc5 g3 70.Kd5 g2 71.Ke4 Kh2 0-1

DELEHANTY UNDEFEATED

Scoring an unbeaten 4-2, Thomas Delehanty took first place in the John Collins 06C18.

Delehanty	2214		==	1=	=1	4
Corbett	2211	==		01	=1	3.5
Bellnap	2108	0=	10		1=	3
Fairbairn	2091	=0	=0	0=		1.5

GRUNFELD DEFENSE (D85)

White: Thomas Delehanty (2214)

Black: Claude Corbett (2211)

John Collins 2006

1.d4 Nf6 2.c4 g6 3.Nc3 d5 4.cxd5 Nxd5 5.e4 Nxc3 6.bxc3 Bg7 7.Be3 c5 8.Qd2 Qa5 9.Rb1 cxd4 10.cxd4 Qxd2+ 11.Kxd2 0-0 12.Nf3 e6 13.Bd3 Nc6 14.Rhc1 Rd8 15.Rc4 h6 16.h4 f5 17.Ke2 Bd7 18.Rxb7 Na5 19.Rxd7 Rxd7 20.Ra4 Nb7 21.Bc4 Re7 22.Ra6 Nd8 23.Ne5 Kh7 24.h5 Bxe5 25.dxe5 fxe4 26.hxg6+ Kg7 27.Bb3 Rc8 28.Ra4 Kxg6 29.Rxe4 Nf7 30.f4 h5 31.Ra4 Rcc7 32.Ra6 Kf5 33.Kf3 Rc3 34.g3 Nd8 35.Kf2 Rd7 36.Rd6 Rxd6 37.exd6 Rc6 38.Bxa7 Rxd6 39.Bc5 Rd7 40.a4 h4 41.gxh4 Kxf4 42.Be3+ Kg4 43.Bg5 Rd6 ½-½

ICCF WORLD JUNIOR CHAMPIONSHIP

Currently (19 June) there are two USA entries into the ICCF 1st World Junior Correspondence Chess Championship: Anthony Kain and Cian Wingo. Good skill, guys! And maybe more young US players will enter before the deadline.

CLASSIFIED ADS

LEARN CHESS BY MAIL ! Lessons given by mail, telephone, ICC – many different ways. I specialize in players rated 800-2100 who would like to improve their game. Contact me for information. Alex Dunne, 324 West Lockhart St., Sayre, PA 18840 or chesskinetics@stny.rr.com

READERSHIP POLL !

I WANT YOUR OPINION.

Please let me know what you think.

Should computers be allowed in the Golden Knights ?

Should computers be allowed in the Electronic Knights ?

Should computers be forbidden in class tournaments under 2000 ?

Should computers be allowed in the Absolute Championship ?

Should the USCF expand the webserver tournaments to include Electronic Knights, Trophy, and Express Tournaments ?

Should special tournaments be constructed allowing computer use in USCF CC play ?

Let me know your thoughts on these issues and others of concern to you. You are USCF Correspondence Chess. You will make it what it is tomorrow.

Quote: Correspondence play is helpful in building up judgment, provided that you continue to play over the board and give yourself a chance to practice exercising that judgment rapidly. -- Cecil Purdy

TOM BROCHARD PERFECT IN 06 PALCIAUSKAS TOURNAMENT

Scoring an unblemished 6-0 Tom Brochard of Milford, CT pushed his rating up to the Master level.

Brochard	2119		1	1	1	1	1	1	6
Cross	2106	0		1	1	=	1	1	4½
Perone	2003	0	0		1	1	1	1	4
Sgro	2063	0	0	0		1	=	1	2½
Leach	2188	0	=	0	0		=	1	2
Marples	2065	0	0	0	=	=		1	2
Stewart	2178	0	0	0	0	0	0		0

Tom notes that he played the Colle as White in the 1990's and feels that this game is a good example of how to meet the Colle.

COLLE OPENING (D04)

White: David Marples (2065)

Black: Tom Brochard (2119)

2006 Palciaukas Tournament

1.d4 Nf6 2.Nf3 d5 3.e3 Bg4 4.Nbd2 e6 5.Bd3 c5 6.c3 Nc6 7.0-0 Bd6 8.h3 Bh5 9.dxc5 Bxc5 10.e4 0-0 11.Qe2 Qc7 12.g4 Qg3+ 13.Kh1 Qxh3+ 14.Nh2 Bxg4 15.f3 Nh5 0-1

This is hyper-modern chess at its finest ! White's incredible Knight maneuver starting at Move 8 out-Nimzoviches Nimzovich.

SICILIAN DEFENSE (B30)

White: Corky Schakel (2371)

Black: William Naff (2241)

1997 Golden Knights Final

1.e4 c5 2.Nf3 Nc6 3.Bb5 e5 4.0-0 d6 5.d3 Be7 6.Nc3 Be6 7.a4 Nf6 8.Ng5 Bg4 9.f3 Bh5 10.Bc4 0-0 11.Nh3 Qd7 12.Nf2 Bd8 13.Be3 Kh8 14.Nh1 Bg6 15.Ng3 Nh5 16.Nxh5 Bxh5 17.Nd5 Ne7 18.Nxe7 Qxe7 19.Qd2 g5 20.a5 Bg6 21.b4 f6 22.Rfb1 Rc8 23.Bd5 Rc7 24.bxc5 dxc5 25.Qf2 1-0

En Route to a perfect score, Dave Huslig scores against the section's top rated.

SLAV DEFENSE (D15)

White: David Huslig (1913)

Black: Richard Mahon (1994)

2006 John Collins

1.d4 d5 2.c4 c6 3.Nf3 Nf6 4.Nc3 a6
5.cxd5 cxd5 6.Bf4 b5 7.e3 Bg4 8.Bd3
Nc6 9.0-0 e6 10.Rc1 Rc8 11.Nxb5 Bxf3
12.Qa4 axb5 13.Bxb5 Be7 14.Bxc6+
Kf8 15.Bb7 Rc4 16.Rxc4 dxc4 17.Bxf3
Nd5 18.Qxc4 Nxf4 19.exf4 g6 20.d5
exd5 21.Bxd5 f5 22.Re1 Kg7 23.Qd4+
Bf6 24.Qa7+ Kh6 25.Re3 Re8 26.Rh3+
Bh4 27.Kf1 g5 28.fxg5+ 1-0

An impressive example of Btrandhorst's defensive skills

RUY LOPEZ (C87)

(White: Wesley Brandhorst (2446))

Black: Robert Jacobs (2391)

2004 Absolute

1.e4 e5 2.Nf3 Nc6 3.Bb5 Nf6 4.0-0
Nxe4 5.Re1 Nd6 6.Nxe5 Be7 7.Bf1
Nxe5 8.Rxe5 0-0 9.Nc3 Ne8 10.d4 Bf6
11.Re1 d5 12.Bd3 c6 13.Na4 Bxd4
14.Bxh7+ Kxh7 15.Qxd4 Qf6 16.Qb4
Rh8 17.Bf4 b6 18.Be5 Qg6 19.Qa3 c5
20.b4 cxb4 21.Qxb4 Bh3 22.Bg3 Be6
23.Qd2 Nf6 24.f3 Rac8 25.Re2 d4
26.Nb2 Rhd8 27.Nd3 Bf5 28.Ne5 Qh5
29.Rc1 Nd5 30.Bf4 f6 31.g4 Qh3
32.gxf5 fxe5 33.Bxe5 Ne3 34.Qd3 Qxf3
35.f6+ g6 36.Rce1 Rc3 37.Qa6 Qg4+
38.Bg3 Rd7 39.Qa4 Rc4 40.Qb3 Rf7
41.Rf2 Qd7 42.Rf4 b5 43.Rh4+ Kg8
44.Qd3 Nf5 45.Rg4 Rc3 46.Re8+ Qxe8
47.Qxf5 Rxg3+ ½-½

The Colle is more than a pet -- it can be a vicious attack dog, too.

COLLE OPENING (D04)

White: Bill Machi (1535)

Black: Paul Bevans (0000)

2006 Electronic Knights

1.d4 d5 2.Nf3 Nf6 3.e3 Nbd7 4.Bd3 c5
5.c3 b6 6.Nbd2 c4 7.Bc2 Ba6 8.e4 dxe4
9.Nxe4 e6 10.0-0 Be7 11.Nxf6+ Bxf6
12.Re1 0-0 13.Qe2 Re8 14.Bf4 h6
15.Qe4 Nf8 16.Ne5 Bxe5 17.Bxe5 f5
18.Qe2 Ng6 19.Qh5 Nxe5 20.Rxe5 Bb7
21.Rae1 Bd5 22.Bxf5 Qd6 23.Qg6 1-0

White dominates the kingside, Black the queenside, but only one side breaks through in this thematic French.

FRENCH DEFENSE

White: Barry Walker (2039)

Black: Brian Perry (1902)

2006 Electronic Knights

1.e4 e6 2.d4 d5 3.e5 c5 4.c3 Nc6 5.Nf3
Bd7 6.a3 c4 7.Bf4 Nge7 8.Nbd2 Nc8
9.h4 Be7 10.h5 Nb6 11.g4 Na5 12.Bh3
Ba4 13.Qb1 Nb3 14.Nxb3 Bxb3 15.0-0
h6 16.Bg3 Qc7 17.Nh4 0-0-0 18.f4
Bxh4 19.Bxh4 Rde8 20.Rf2 Rhf8
21.Qh7 Rg8 22.Raf1 Ba4 23.f5 exf5
24.Qxf5+ Bd7 25.Qxf7 Qc6 26.Qf3 Be6
27.g5 hxg5 28.Bxg5 Nd7 29.Bxe6 Qxe6
30.Qf5 Rh8 31.Qxe6 Rxe6 32.Rf7 Rxh5
33.Rxg7 Re8 34.Rff7 Reh8 35.Rxd7
Rxg5+ 36.Rxg5 Kxd7 37.Rg7+ Kc8
38.Kf2 Rf8+ 39.Ke3 a6 40.Rg6 Rd8
41.Kf4 Rd7 42.Kf5 Kd8 43.Ke6 Kc7
44.Rf6 Kc6 45.Rf8 Rc7 46.Rd8 1-0