



# Check is in the Mail

by FIDE Master Alex Dunne

## ICCM William Boucher

William Boucher is a 39-year-old high school physics teacher, but that only begins to identify America's newest International Correspondence Chess Master. Actually, teaching is a second career for William. He worked as an environmental engineer designing wastewater pollution control systems for over 10 years, then switched to teaching to simplify his life. He learned chess at age 6, progressed to about 2100 OTB, helped by some great New Hampshire chess players: Keith Hayward, Hal Terrie, Gary Nute, and Jim Bovay among others.

His first postal event was the 1990 preliminary round of the 10<sup>th</sup> US Championship. He entered on a whim and found himself unprepared for the demands of correspondence chess. In later events he showed steady improvement, qualifying for the 14<sup>th</sup> USCCC Finals and doing well in international events.

What has ICCM William Boucher learned about correspondence chess? Much, and he shares some of his thoughts with the readers: I play every game like it is the most important in the world. If I am winning, I put everything into the win. If I am losing, I do everything to avoid a loss. I have won or drawn a number of lost games merely because of persistence. The importance of openings is incredibly magnified. It is very difficult to survive even a slightly inferior position from the opening. Therefore, I always play openings with a close eye on current theory. Very few people make blatant middlegame mistakes. Therefore, many games are won or lost in the transition to the endgame. This is the phase where I spend the greatest amount of time.

### GAME OF THE MONTH

When White essays a novelty with 13 Qc7, Boucher demonstrates that transition into a favorable endgame. The rest of the game is smooth.

#### FRENCH DEFENSE [C18]

W: Edward McRae (2310)  
B: IM William Boucher (2445)

14<sup>th</sup> USCCC

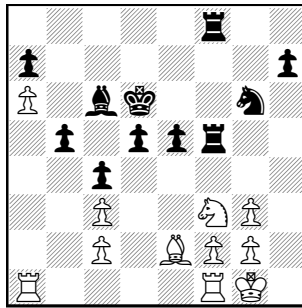
1 e4 e6 2 d4 d5 3 Nc3 Bb4 4 e5 c5  
5 a3 Bxc3+ 6 bxc3 Qc7 7 Qg4 f6 8 Nf3  
c4 9 Qg3 Qf7 10 Be2 Nc6 11 0-0 Nge7

12 exf6 gxf6 13 Qc7 Svidler–Nikolic, Panormo 2001, elected to keep the queens on the board with 13 Nh4. White's middlegame chances seem better than those of his endgame despite the two bishops.

13...Nf5 14 Qxf7+ Kxf7 15 Bf4 Bd7  
16 Rfe1 Nce7 17 a4 Ng6 18 Bd2 Nd6  
Black stands better with center squares for his knights and the better pawn structure.

19 Reb1 Bc6 20 Bh6 Rhg8 21 a5  
Rad8 22 Ne1 Nh4 23 Bh5+ Ke7 24 a6?!  
White is trying too hard. The a6-pawn will soon become a target.

24...b6 25 Bf4 Ne4 26 Ra3 e5 27  
dxe5 fxe5 28 Bg3 Nxf3 29 hxg3 Rg5  
30 Be2 Ng6 31 Nf3 Rf5 32 Re1 Kd6  
33 Raa1 Rdf8 34 Rf1 b5 (diagram)



after 34...b5

Black dominates the board. White cannot prevent all the breaks—...b4, ...d4, and ...e4-e3.

35 Rae1 Kc5 36 Nh2 Kb6 37 Ra1 d4  
38 cxd4 exd4 39 Nf3 Kc5 40 Rad1 Rd8  
41 Rd2 Rf6 42 Ra1 Rdd6 43 Ne1 b4  
44 Bg4 Bb5 45 Nf3 c3 46 Rdd1 d3  
White is helpless in the face of the 3-to-1 pawn rush.

47 Ng5 dxc2 48 Ne4+ Kb6 49 Re1 b3  
50 Rac1 Bd3 51 Nxc3 Ka5 52 Ra1+  
Kb4 53 Na4 Rxa6 54 Nb2 Rxa1 55 Rxa1  
Kc3 56 Nxd3 Kxd3 0-1

• ChessFriend.com has started its club championship featuring the highest prize fund in correspondence chess history. With a first-place prize of 30,000 Euros (based on 800 participants) and money prizes down to 15<sup>th</sup> place in the open and money prizes for 1<sup>st</sup>-5<sup>th</sup> in the 1800-2200 and under 1800 rated divisions, CFC is making a bid to redefine correspondence chess. Interested players could contact CFC at [www.chessfriend.com](http://www.chessfriend.com).

• "A real correspondence player sends a move only when everything becomes completely clear to him."  
—Vladimir Yarkov, 18<sup>th</sup> Soviet CC Champion

• In the pursuit of holding the balance of the game, it is sometimes nec-

essary to unbalance the position. John Mousessian demonstrates that the two bishops and sound pawn structure aren't always enough.

#### CARO-KANN DEFENSE [B12]

W: IM John Mousessian (2443)  
B: E. Fischer (2420)

15 USCCC

1 e4 c6 2 d4 d5 3 e5 Bf5 4 Nc3 e6 5  
g4 Bg6 6 Nge2 c5 7 h4 h5 8 Nf4 Nc6 9  
Nfg6 fvg6 10 Ne2 Nge7 11 Nf4 cxd4 12  
Nxe6 Qd7 13 Nxf8 Rxf8 14 f4 Qxg4 15  
Qxg4 hxg4 16 Rg1 Nf5 17 Rxg4 Nb4 18  
Bb5+ Kf7 19 Ba4 Rac8 20 Kd1 Na6 21  
Bb3 Rfd8 22 Ke2 Nc5 23 Bd2 Nxb3 24  
axb3 Rxc2 25 Rxa7 Rd7 26 Ra2 Rdc7  
27 Kd3 b6 28 Ra6 Rxb2 29 Rxb6 1/2-1/2

• White's king is the hero of this piece, almost singlehandedly scoring a touchdown via an end run.

#### NIMZO-INDIAN DEFENSE [E41]

W: John Caliguire (1992)  
B: Richard Title (2429)

CCLA Team Championship 2003

1 d4 Nf6 2 c4 e6 3 Nc3 Bb4 4 e3 c5  
5 Bd3 Nc6 6 Nf3 Bxc3+ 7 bxc3 d6 8 e4  
e5 9 d5 Ne7 10 Rb1 Ng6 11 0-0 0-0 12  
Ne1 h6 13 Bd2 Rb8 14 Rb2 Qd7 15 Qf3  
Qa4 16 Nc2 Bg4 17 Qg3 Bd7 18 Rfb1  
Nh5 19 Qf3 Nh4 20 Bf1 f5 21 Ne3 fxe4  
22 Qxe4 Nh4 23 Rxb7 Rxb7 24 Rxb7  
Qxa2 25 Qc2 Qxc2 26 Nxc2 Nh3+ 27  
gxh3 Nf3+ 28 Kg2 Bc8 29 Rxa7 Nxd2  
30 Bd3 Bxh3+ 31 Kxh3 Rf3+ 32 Kg4  
Rxd3 33 Ne3 Rxc3 34 Kf5 Nxc4 35 Kg6  
Kf8 36 Nf5 Ke8 37 Kxg7 Re1 38 Kf6  
Rg1 39 Ne7 Nb6 40 Ke6 1-0

• "This was...the craziest postal game I've ever played and about as much fun as anyone can have in a game and still lose." —David Long

#### KING'S GAMBIT [C33]

W: David Long (1898)  
B: Glenn Reyes (2135)

USA Postal 2004

1 e4 e5 2 f4 exf4 3 Bc4 Qh4+ 4 Kf1  
d6 5 d4 Nc6 6 Nf3 Qg4 7 c3 Nf6 8 Nbd2  
Be7 9 Kf2 Qg6 10 Re1 Ng4+ 11 Ke2  
Ne3 12 Qa4 Qxg2+ 13 Kd3 Bg4 14 d5  
Bxf3 15 dxc6 0-0 16 cxb7 Rab8 17 Nxf3  
Nxc4 18 Kxc4 Qxf3 19 Qxa7 Bh4 20  
Bd2 Rfd8 21 Kb3 d5 22 a4 Bxe1 23  
Bxe1 dxe4 24 a5 e3 25 a6 e2 26 Qc5  
Qd3 27 Qc4 Qd1+ 28 Ka2 h5 29 Qc6  
Kh7 30 b4 Qc2+ 31 Ka3 Rd1 32 Ra2  
Qc1+ 33 Ka4 Rxe1 34 a7 Qd1+ 35 Ka5  
Rxb7 36 Qe4+ g6 37 a8(Q) Qb3 38 Ra4  
Rg1 39 Qe5 Qxa4+ 40 Kxa4 Ra1+ 41  
Kb3 Rxa8 42 Qxe2 Ra5 43 Qe4 Rab5  
44 Kc2 c5 45 bxc5 Rc7 46 Qxf4 Rbxc5  
47 Qf6 Rxc3+ 48 Kd2 Rc2+ 49 Kd3  
Rxb2 0-1

## CORRESPONDENCE CHESS TOURNAMENT UPDATES FOR APRIL AND MAY 2004

### CONGRATULATIONS!

#### Sr. Master Certificate Winner

Bleys W. Rose                    2400

#### Candidate Master Certificate Winner

Laurence T. Bonsack        2024

#### Trophy Quad Winners

Gilbert W. Chavez Jr.	02QC14	5½-½
Harold D. Shane	02QAB20	6-0
Stephen J. Hrabousky	02QC23	6-0

#### John W. Collins Memorial Class Tournament Winners

Larry E. Cox	02CMA49	5½-½
Stephen C. Otto	02CCD64	5½-½
Gregory Durham	02CCD55	5½-½
William G.L. Parker	02CAB58	6-0
Scott M. Hacker	03CCD50	6-0
James E. Nunnally	02CC84	6-0
Steve Ray Douglas	03CC23	5½-½
Ernest Chace	03CA24	6-0

#### Victor Palciauskas Prize Tournament Winner

Rick L. Earsley                    02UAB8                    6-0

## CORRESPONDENCE CHESS PLAYERS

You are invited to send me your comments, questions and correspondence games (with or without annotation). Because of the volume of mail, submissions cannot be returned, and personal replies are not possible. Send letters to: Alex Dunne, *Chess Life*, 3068 US Route 9W, Suite 100, New Windsor, NY 12553 or e-mail: alex.dunne@cqservices.com

### POSTAL BEAUTY CONTEST

Is it right that beauty is so often only its own reward? Surely not! And thanks to the generosity of Dr. Ronald Hames, the scales of justice have become more evenly balanced between how one wins and the hard fact of victory. For now in *Chess Life* the players who conduct scintillating games will receive the Hames Correspondence Game of the Year Awards. Resident postal editor Alex Dunne is the judge of a contest with prizes of \$100 for the best game by a master and \$100 for the best game by a non-master to appear in *Check* is in the Mail during a given year. What better reason, then, to send your postal brilliancies to Alex Dunne?

**ICCF-US Announces the  
17<sup>th</sup> POSTAL and 3<sup>rd</sup> E-MAIL  
U.S. CORRESPONDENCE  
CHESS CHAMPIONSHIPS  
U.S. CHAMPIONSHIP TROPHY  
AND ENTRY TO ICCF  
WORLD CHAMPIONSHIP SEMIFINALS**

**REQUIREMENTS FOR ENTRY:**

APCT, CCLA or USCF membership.  
Minimum rating: postal 2000 or OTB 2100.  
Must be U.S. citizen or permanent resident.

Preliminary round sections: up to 15 players,  
E-mail – 7 players balanced by rating.  
Winners advance: Final round includes  
designated champions of USPCF clubs  
and former U.S. Champions.

**POSTAL ENTRIES CLOSE July 15, 2004**

**Start date August 15, 2004**

**E-MAIL ENTRIES CLOSE December 15, 2004**

**Start date February 1, 2005**

Dates may be extended until minimum of 70 entries are received.

SEND \$25 ENTRY FEE PAYABLE TO ICCF-US  
1642 N. VOLUSIA, ORANGE CITY, FL 32763

**More information at [www.iccfus.com](http://www.iccfus.com)**

## CHESS FESTIVAL IV (2004)

### For the TIME OF YOUR CHESS LIFE!

Celebrities: GM Karsten Müller, IM Andrew Martin,  
and ICCF GM Jonathan Berry... + Evenings with An-  
drew Martin (Nov. 2-3) • Lectures • Blindfold Simul  
• Blitz Nite • FREE Get Acquainted Pizza Party • New  
and OLD Book Sales • Silent Auction • Leapfrog  
Hammer Simul • Autographing and Photo Sessions  
• All Equipment Supplied • T-shirts • Gift Bag!

[www.chessco.com](http://www.chessco.com)

Starts Thursday  
Evening. Ends  
Saturday Evening.  
NOV. 4th-6th.  
Return home on  
Sunday! Good  
seating for 100!  
**Total Chess  
Entertainment—2004!!!**  
THE LODGE, Bettendorf, IA. Confir-  
mation No. 64113. 1-800-285-8637.



### REGISTRATION

At Door: \$150<sup>00</sup>  
Advanced Reg.: \$135<sup>00</sup>  
(by Oct. 4, 2004)  
Only \$125<sup>00</sup> ea. for 2 or  
more in same party  
(by Oct. 4, 2004)  
Spouses: \$75<sup>00</sup>  
A. Martin (Nov 2-3): \$50<sup>00</sup>  
Visa & MasterCard accepted  
1-800-397-7117  
More Info: [www.chessco.com](http://www.chessco.com)

**Thinkers' Press, Inc.**

1101 W. 4th St. • Davenport, IA 52802