



# Check is in the Mail

by FIDE Master Alex Dunne

## A Search for Zen

Robert Rizzo was born in 1948 and has been a USCF member since 1965. As a member of the USCF Correspondence Chess Committee, he is one of the chief architects of the Absolute Project whose aim is to archive the history of the premier correspondence tournament of the USCF. Mostly retired from OTB play, Bob now channels most of his chess energies toward correspondence chess. His foremost achievement to date was to tie for first place in the AJEC Invitational Jaudran Memorial B tournament, where he earned an SIM norm and the IM title in the process.

Bob also earned an IM norm in ICCF Masternorm #40, won a preliminary section of the XII World Cup, and played fourth board on the winning U.S. team against Portugal. He was first board on the team *Postcards from the Edge* which won the top section in the 1998 USCF Correspondence Chess Team Tournament. He has also qualified for two finals of the U.S. Postal Championship.

Bob believes OTB chess is more geared to the young – requiring good nerves, physical endurance, and the ability to conform to the schedule of the tournament director. The correspondence chess format frees one to find what GM Seirawan calls “the Zen of the position” or at least get closer to it. Bob notes that when he finds a gem of a novelty or an endgame solution, the rush he gets at such moments must be akin to what a scientist or mathematician must feel when solving a great problem or making a discovery.

### GAME OF THE MONTH

White chooses an unusual way to get to the Sicilian Defense; Black chooses a common scenario: Use the extra center pawn to take the center and then use the center to gain a kingside attack. Rizzo makes it look like a Zen koan.

#### SICILIAN DEFENSE [B33]

W: B. Berriot (2375)  
B: IM Robert Rizzo (2404)

*Jaudran Memorial 2002*

**1 d4 Nf6 2 Nc3 c5 3 Nf3 cxd4 4 Nxd4 Nc6 5 e4 e5 6 Ndb5 d6 7 Nd5 Nxd5 8 exd5 Nb8 9 c4 a6 10 Nc3 Be7 11 Bd3 0-0 12 0-0 f5 13 f3 Nd7 14 Kh1 Nc5**

Most popular is 14 ... Bg5 which scores well for Black.

**15 Bc2 a5 16 Be3 b6**

Rizzo has tried 16 ... Bd7 and 16 ... Na6, both with success (1½-½).

**17 a4 Bg5 18 f4 Bf6 19 fxe5 Bxe5**

Black has transformed his central edge to a kingside pawn majority.

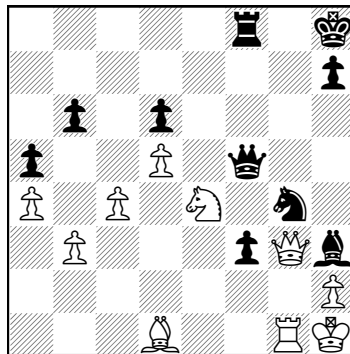
**20 Qd2 Qh4 21 Bf4 Bd7 22 b3 Rae8 23 g3 Qh3 24 Rf2 Bxf4 25 Rxf4 g5 26 Rf2 f4 27 Raf1 Bg4 28 Kg1**

Rizzo gives 28 gxf4 Re3 29 Bd1 h5 30 f5 Nd3 31 Ne4 Nxf2+ 32 Rxf2 Bxf5 33 Nxf5 Be4+ 34 Nxe4 Rxf2 35 Qxf2 Rxe4 36 Qg2+ Qxg2+ 37 Kxg2 Re3 with a probable winning endgame.

**28 ... Qh5 29 gxf4 Bh3 30 Rd1 Rxf4 31 Re1**

Winning for Black is 31 Rxf4 gxf4 32 Qxf4 Re7!

**31 ... Re1 32 Rxf4 gxf4 33 Qf2 Nd7! 34 Kh1 Ne5 35 Ne4 Ng4 36 Rg1 f3 37 Qg3 Kh8 38 Bd1 Qf5, White resigns.**



after 38 ... Qf5

Rizzo notes that there is no defense: 39 Qxh3 (39 Bxf3 Qxf3+ 40 Qxf3 Rxf3 41 Rb1 Rf4 42 Ng5 Rf2 43 Nxf3 Rxf2+ 44 Kg1 Rxf3 or 39 Ng5 Bg2+ 40 Rxf2 fxf2+ 41 Qxg2 Nf2+ 42 Kg1 Nxd1) 39 ... f2 40 Rxf4 f1-Q+ 41 Qxf1 Qxf1+ 42 Rg1 Qd3 wins.

• The 2004 Absolute Championship is underway. Sporting an average of 2358, and led by IM Ted Brandhorst (2446), David Novak (2428), and IM Corky Schakel (2405), the '04 Absolute has no weak links. The rest of the best are IM Robert Jacobs (who won the 1976 Absolute!) Lawrence Coplin, Eric Fischvogt, IM Kristo Miettinen, William Gray, Jr., Guido Stueber, IM N. Eric Pedersen, Michael Calogridis, Gardner Johnson, Jr., and Joseph Shipman. These are warriors and they are fighting for a plaque. I thought it too bad there couldn't be a monetary award. Perhaps some benefactor would like to endow the Absolute? And perhaps

if you are a member of CCLA, APCT or ASPC or other organization, perhaps you would like to make a similar donation for your club's premiere event.

• Kevin Mulloy asks, “Are endgame databases legal?” Endgame databases, like opening databases, do not generate moves. These endings have already been exhaustively analyzed and the result is given in CD form. So, yes, endgame databases are legal in correspondence play.

• Kon Grivainis in his book *Winning Correspondence Chess* offers three golden rules for correspondence players: 1) Focus on your analysis. 2) Resign your lost games! 3) Do not procrastinate.

• IM Tim Murray (of the USA) has made a GM norm at Board 1 in the 15<sup>th</sup> Olympiad.

This wild game may have had its character defined by the fact that Moves 36-38 were played during Black's first tour of duty in Afghanistan.

#### QUEEN'S GAMBIT DECLINED [D57]

W: Elliot Lilien (2036)  
B: Joseph Schwing (2435)

*2001 Golden Knights Semifinal*

**1 d4 d5 2 c4 e6 3 Nc3 Nf6 4 Bg5 Be7 5 e3 0-0 6 Nf3 h6 7 Bh4 Ne4 8 Bxe7 Qxe7 9 cxd5 Nxc3 10 bxc3 exd5 11 Qb3 Rd8 12 c4 Be6 13 Qxb7 Qa3 14 Rb1 Qxa2 15 Bd3 Nd7 16 cxd5 Rdb8 17 dxe6 Rxb7 18 exf7+ Kxf7 19 Rxb7 Qa1+ 20 Rb1 Qc3+ 21 Ke2 Rb8 22 Rbc1 Rb2+ 23 Rxb2 Qxb2+ 24 Rc2 Qb6 25 e4 a5 26 e5 a4 27 Bc4+ Kf8 28 Ba2 a3 29 Ke3 c5 30 d5 c4+ 31 Kf4 g5+ 32 Kf5 g4 33 Nh4 Qd4 34 Ng6+ Kg7 35 Rxc4 Qd3+ 36 Ke6 Kxg6 37 Kxd7 Qxd5+ 38 Kc8 Qg8+ 39 Kc7 Qf7+ 40 Kd6 Qxf2 41 Bb1+ Kg5 42 e6 Qb6+ 43 Rc6 Qxb1 44 e7 Qb8+ 45 Kd7 a2 46 Rc1 Qb5+ 47 Kd8 Qd3+ 48 Kc8 Qe3 49 Kd8 Qd2+, White resigns.**

White's opening is worth noting for English advocates. But does White's endgame mirror his opening?

#### ENGLISH OPENING [A34]

W: Barry Endsley (2258)  
B: Don Woodhouse (2228)

*2003 Golden Knights*

**1 c4 Nf6 2 Nc3 c5 3 Nf3 d5 4 cxd5 Nxd5 5 g3 g6 6 Qb3 Nc7 7 Ne4 Ne6 8 Nfg5 Nfg5 9 Nfg5 e6 10 Qc3 Qd4 11 Bg2 h6 12 Nf3 Qxc3 13 dxc3 Nc6 14 Bf4 g5 15 Be3 Bd7 16 Nd2 b6 17 h4 g4 18 0-0-0 0-0-0 19 Bf4 e5 20 Bxc6 Bxc6 21 Bxe5**

Bxh1 22 Bxh8 Bb7 23 Nc4 h5 24  
 Rxd8+ Kxd8 25 b3 Kd7 26 Be5  
 Ba6 27 Kd2 Bh6+ 28 Kd3 Kc6 29  
 Ke4 Bc8 30 Nd6 Be6 31 Nf5 Bd5+  
 32 Kd3 Bf8 33 Ke3 a5 34 Kf4 c4  
 35 e4 Be6 36 Nd4+ Kd7 37 Kg5 b5  
 38 b4 axb4 39 cxb4 Bxb4 40 Nxb5  
 Be1 41 Bd4, Black resigns.

White shows a strong fighting spirit that allows him to make a comeback in this slug fest.

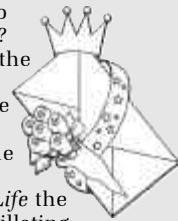
**GROB ATTACK** [A00]  
 W: Ray Kappel (1825)  
 B: Allen Lewis (1779)  
 2003 Golden Knights

1 g4 d5 2 Bg2 c6 3 h3 e5 4 d3  
 Ne7 5 Nf3 Ng6 6 Nc3 Nh4 7 Nxb4  
 Qxh4 8 Bd2 Bc5 9 0-0 Be6 10 Qc1  
 h6 11 a3 Nd7 12 e4 Nf6 13 Ne2  
 dxe4 14 dxe4 Bxg4 15 Be3 Bxe2  
 16 Bxc5 Bxf1 17 Qxf1 b6 18 Bd6  
 Nd7 19 Qa6 Qd8 20 Rd1 Qc8 21  
 Qd3 Qb7 22 Qc4 b5 23 Qb3 Rd8  
 24 Qg3 Rg8 25 Bxe5 Nc5 26 Bd6  
 Rxd6 27 Qxd6 Ne6 28 e5, Black  
 resigns.



## POSTAL BEAUTY CONTEST

Is it right that beauty is so often only its own reward? Surely not! And thanks to the generosity of Dr. Ronald Hames, the scales of justice have become more evenly balanced between how one wins and the hard fact of victory. For now in *Chess Life* the players who conduct scintillating games will receive the Hames Correspondence Game of the Year Awards. Resident postal editor Alex Dunne is the judge of a contest with prizes of \$100 for the best game by a master and \$100 for the best game by a non-master to appear in *Check* is in the Mail during a given year. What better reason, then, to send your postal brilliancies to Alex Dunne?



You are invited to send me your comments, questions and correspondence games (with or without annotation). Because of the volume of mail, submissions cannot be returned, and personal replies are not possible.

**For Correspondence Chess game results, time complaints, vacation notices, etc.,** mail them to: Alex Dunne, PO Box 367, Sayre, PA 18840 or e-mail: alex.dunne@cqservices.com

**For Correspondence Chess tournament entries,** these **MUST** be mailed to: Joan DuBois, USCF, PO Box 3967, Crossville, TN 38557.

## CORRESPONDENCE CHESS TOURNAMENT UPDATES FOR MAY 2005

### CONGRATULATIONS!

#### SENIOR MASTER

Lawrence Coplin 2401

#### MASTER

David Porter 2201

#### CANDIDATE MASTER

Ron Brumley 2011

#### E-MAIL WINNER

#### SWIFT QUAD

Alex Dupuy 04SQ15 6-0

#### TOURNAMENT WINNERS

#### TROPHY QUADS

Lawrence Anderson 03QM25 5-1

#### JOHN COLLINS MEMORIAL CLASS

Bruce Elkins 03CC34 5-1

Allen Rooke 03CC34 5-1

John Davis 03CB35 5-1

#### VICTOR PALCIAUSKAS PRIZE

Joel Levine 03UM01 5 1/2-1/2

## CHECK OUT USCF'S CORRESPONDENCE CHESS RATED EVENTS

### USCF's 58<sup>th</sup> ANNUAL

2005 Open Correspondence Chess Golden Knights Championship

**\$1,500 First Prize**

(plus title of USCF's Golden Knights Champion and plaque)

• 2nd place \$800 • 3rd place \$600 • 4th place \$400 • 5th place \$200 • 6th thru 10th place \$100 each. **Entry fee: \$25.**

**The entry deadline is November 30, 2005.**

These USCF Correspondence Chess events are rated and open to all USCF members who reside on the North American continent, islands, or Hawaii, as well as those USCF members with an APO or FPO address. USCF members who reside outside of the North American continent are welcome to participate in e-mail events. Your USCF membership must remain current for the duration of the event, and entry fees must be paid in U.S. dollars. Those new to USCF Correspondence Chess, please estimate your strength: **Class A:** 1800-1999 (very strong); **Class B:** 1600-1799 (strong); **Class C:** 1400-1599 (intermediate); **Class D:** 1399 and below (beginner level). **Note:** Prize fund guaranteed (based on 400 entries) and will be increased or decreased proportionately per number of entries assigned.

#### CORRESPONDENCE CHESS MATCHES (TWO PLAYERS)

**\$5 entry fee per person** with two, four or six game options.

#### WIN A CORRESPONDENCE CHESS TROPHY

Four-player, double round-robin with class-level pairings. 1st place winner receives a trophy. **Entry fee: \$10.**

#### VICTOR PALCIAUSKAS PRIZE TOURNAMENTS

Seven-player class-level pairings, one game with each of six opponents. Players must have a USCF CC rating to enter. 1st-place winner receives \$130 cash prize and a certificate signed by Victor Palciauskas. **Entry fee: \$25.**

#### JOHN W. COLLINS MEMORIAL CLASS TOURNAMENTS

Four-player, double round-robin with class-level pairings (unrateds welcome). 1st-place winner receives a John W. Collins certificate.

**Entry fee: \$7.**

#### E-MAIL RATED EVENTS (NEED E-MAIL ACCESS):

**LIGHTNING MATCH** Two players with two, four or six game option. **Entry fee \$5 per person.**

#### Swift Quads

Four-player, double round-robin format. 1st-place prize merchandise credit of \$30.

**Entry fee: \$10.**

#### Express Tournament

Seven-player events, one game with each of six opponents.

Prizes: 1st place \$30 merchandise credit, 2nd place \$20 credit. **Entry fee: \$15.**

**Please circle event(s) selected.**



U.S. Chess Federation  
[www.uscbess.org](http://www.uscbess.org)



### USCF's 2<sup>nd</sup> ANNUAL

2005 E-mail Correspondence Chess

Electronic Knights Championship

(Seven-player sections, one game with each of six opponents.)

**\$1,500 First Prize**

(plus title of USCF's Electronic Knights Champion and plaque)

• 2nd place \$800 • 3rd place \$600 • 4th place \$400 • 5th place \$200 • 6th thru 10th place \$100 each. **Entry fee: \$25.**

**The entry deadline is November 30, 2005.**

These USCF Correspondence Chess events are rated and open to all USCF members with e-mail access. Your USCF membership must remain current for the duration of the event, and entry fees must be paid in U.S. dollars. Maximum number of tournament entries allowed for the year for each player is ten.

**Note:** Prize fund guaranteed (based on 400 entries) and will be increased or decreased proportionately per number of entries assigned.

**NOTE:** Except for Lightning Matches, Swift Quads and Express Tournaments, players will use post office mail, unless opponents agree to use e-mail.

**TO ENTER: 800-903-USCF (8723) OR FAX 931-787-1200**

Name \_\_\_\_\_  
 USCF ID# \_\_\_\_\_  
 Address \_\_\_\_\_ City \_\_\_\_\_  
 State \_\_\_\_\_ ZIP \_\_\_\_\_ Phone \_\_\_\_\_  
 E-mail \_\_\_\_\_  
 Credit card # (VISA, MC, Discover, AMEX) \_\_\_\_\_  
 Exp. date \_\_\_\_\_ If using VISA, need V-code \_\_\_\_\_

Check here if you do not wish to have an opponent who is incarcerated.

Make checks payable to U.S. Chess and mail to:  
 Joan DuBois, USCF, PO Box 3967, Crossville, TN 38557