

Visit Our Chess Shop in
Schaumburg (E/F/G) at the
National High School Chess Championships

Friday 11:00am - 9:00pm
Saturday 8:00am - 9:00pm
Sunday 8:00am - 6:00pm

The Genuine Staunton™ Original 1849 Series Vintage Chess Pieces - 4.4" King - Now Available

2019 Annual Buying Guide

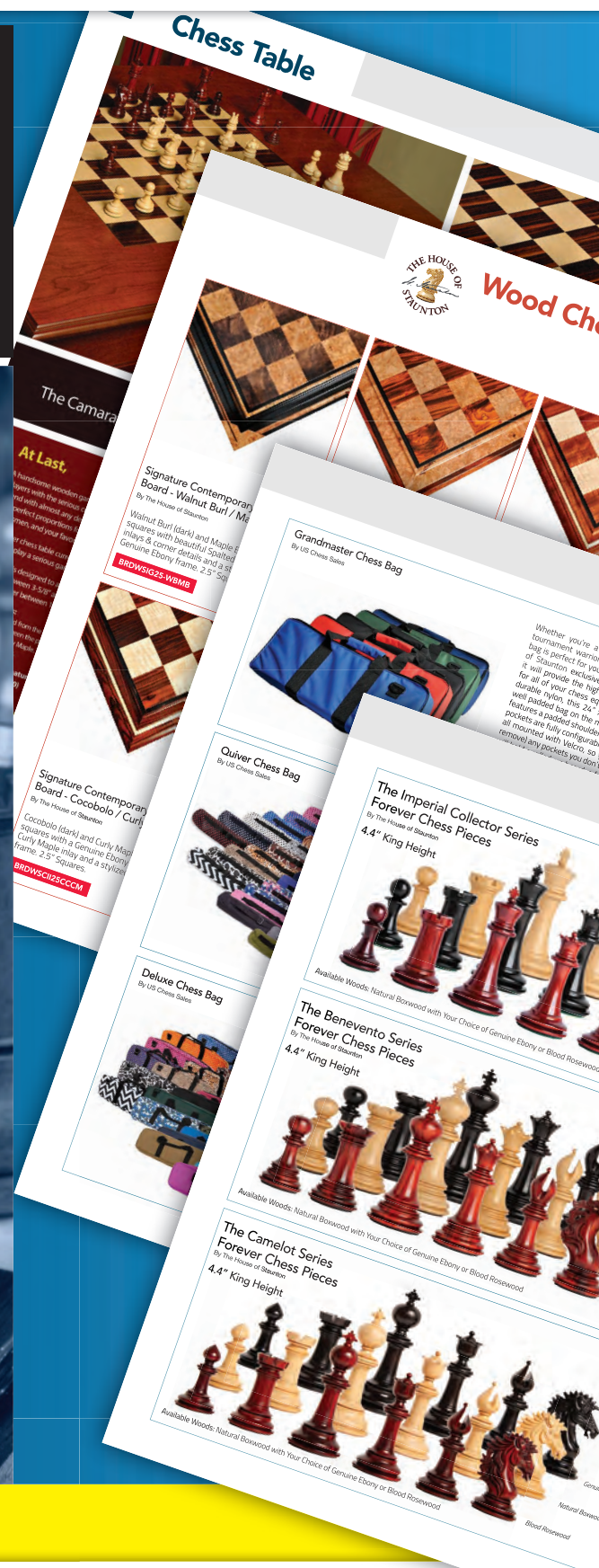


US CHESS
FEDERATION SALES

SAVE 20%
Use Coupon Code:
HIGHSCHOOL

Expires 4/30/19. Discounts can not be
combined. Excludes clearance, shopworn,
imperfect, or otherwise marked.

888.51.CHESS (888.512.4377) • USCFSALES.COM
All Orders Placed By 2:00PM (Central) Ship the Same Business Day!



Get Your Free Copy in the Chess Shop Today!

TABLE *of* CONTENTS

04	Welcome Letters from Director of National Events Boyd M. Reed and Executive Director Carol B. Meyer
06	Welcome Letter from Village of Schaumburg President Al Larson
07	Scholastic Council Representative FIDE Master Sunil Weeramantry
08	Tournament Staff
10	Tournament Schedule
12	Educational Seminars with Ryan Velez
12	Special Guest Grandmaster Jeffery Xiong
13	Official Scoresheets
20	Tournament Rules
22	Electronic Recording Devices Rules
23	Spectator & Photography Policies
24	Guest Grandmaster Vladimir Georgiev
25	Livestream Hosts Women's Grandmaster Jennifer Shahade and Grandmaster Mesgen Amanov
26	<i>Chess Life</i> Infographic: Chess Firsts
29	Recent National High School Champions
31	Future Events

WELCOME TO SCHAUMBURG AND THE 2019 NATIONAL HIGH SCHOOL (K-12) CHAMPIONSHIP!

Welcome to Schaumburg and the 2019 National High School (K-12) Championship. It's my privilege to be part of the team that will make this a quality experience for all players, parents, coaches, and spectators.

We're pleased to be partnering with the Renaissance Schaumburg Hotel & Convention Center for this event.

We've assembled a first-rate team of directors, led by NTD Glenn Panner (chief tournament director), NTD Jeff Smith (floor chief), and NTD Joseph Yun (backroom chief). They will ensure that the tournament is conducted with full observance of all US Chess rules. Kim Cramer and her staff at Chess Control will be happy to assist with any questions you have.

We are happy to have GM Vladimir Georgiev, former national champion of Macedonia and Bulgaria, as our guest grandmaster. Vladimir is a well-known tournament player and successful youth coach in the Chicago area. He will be giving a simultaneous exhibition, a lecture, and *three* "take-on-all-comers" blitz sessions.

We will be broadcasting live analysis of the top boards in the K-12 Championship section on the US Chess Twitch feed. Our analysts are GM Mesgen Amanov (coach of several World Cadet champions) and US Chess' own WGM Jennifer Shahade (two-time U.S. Women's Champion). This live analysis will occur in rounds five through seven. We welcome you to stop in, watch the analysis, and interact with the analysts. Of course, you can also watch the stream on Twitch at www.twitch.tv/uschess. When you see Pete Karagianis, Assistant Director of Events, moving around the site, send all compliments and congratulations his way, as he is the driving force behind this new feature.

We are also offering three lectures this weekend by Ryan Velez, a member-at-large of the US Chess Executive Board. These lectures are free and highly informational. We encourage you to attend at least one of them.

US Chess wants you to have fun and really enjoy yourselves at this event. Of course, we also want you to do so *safely*. Be aware of your surroundings, and keep in mind that you're sharing space with several thousand people this weekend. Remember, safety is no accident.

Under the strategic direction of our Executive Director, Carol Meyer, we are constantly looking for ways to improve our national events. I welcome any ideas or comments you have in that regard.

Please accept my best wishes for an enjoyable and successful tournament.

Sincerely,



Boyd M. Reed
Director of Events



CAROL B. MEYER
US Chess Executive Director

Welcome to the 2019 National High School (K-12) Championship! You set yourself apart from your peers with your commitment and preparation for this national championship event.

US Chess is celebrating its 80th birthday in 2019. There have been many important milestones since our formation when our two predecessor organizations—the American Chess Federation and the National Chess Federation—merged to unite chess activities in the United States under a single umbrella. Our history has been notable: from Bobby Fischer to Fabiano Caruana, to the explosive growth of scholastic chess, to a resurgence of chess in cities all across the country and a US Chess mission that uses chess to empower people, enrich lives, and enhance communities through chess.

While rated tournament play continues to be cornerstone of what US Chess does, we also are fortunate to be able to grow the game among people who are not presently well-represented within our community. One example: our burgeoning program for girls and women is promoting all-female events throughout the country. With financial support from the Saint Louis Chess Club and other private donors, we are developing programs in partnership with our local affiliates to make chess more accessible and welcoming.

Additionally, we are developing a pilot program to support chess for at-risk youth in Title I middle schools. The chess community has long known the potential of chess to bring important life lessons and skills to people who play the game. We

see chess as a tool to transform young players into citizens who believe they can make a difference in their world, no matter where they come from.

In 2018, US Chess held its first annual Senior Tournament of Champions. Organized in the model of other US Chess invitationals like the Denker, Barber, and National Girls Tournament of Champions, this new event saw 41 states (and Washington, DC) send their top senior to play in the inaugural tournament. One participant noted that this event “was a dream come true” and reflects the US Chess commitment to promoting chess as a game for life.

As part of the 80th year celebration, the World Chess Hall of Fame (worldchesshof.org) in St. Louis, Missouri, is running a special exhibition on US Chess. In addition to the excellent exhibits that regularly rotate through the Hall of Fame, we are proud to partner with the Hall of Fame to bring US Chess history to life for chess enthusiasts. I hope you and your family have a chance to catch the exhibition, scheduled to run into October 2019 at this world-class museum.

The scholastic events would not be possible without the adults who support our players. The dedication by teachers, coaches, and volunteers who prepare their students for these events often goes unnoticed. Similarly, the sacrifice made by parents and extended family that allows students to compete is laudable. From all of us at US Chess, thank you for allowing us to be a small part of your player’s chess journey.

Please take advantage of everything here. Visit our exhibitors, the bookstore, grab a commemorative t-shirt, and meet other chess players to enhance your experience. If you see me walking around, please stop me to say hello. One of my greatest joys in this role is interacting with players and their families.

Good luck with your games, make new friends and most of all, have fun while you’re here in Schaumburg.

Sincerely,

A handwritten signature in black ink that reads "Carol B. Meyer". The signature is written in a cursive, flowing style.

Carol B. Meyer
US Chess Executive Director

VILLAGE OF SCHAUMBURG

PROGRESS THROUGH THOUGHTFUL PLANNING



Dear US Chess Federation National High School (K-12) Championship players and attendees:

It is with great pleasure that I welcome you to the Village of Schaumburg for the US Chess Federation National High School (K-12) Championship being held March 15-17, 2019 at the Renaissance Schaumburg Hotel & Convention Center.

I am pleased you have chosen the Renaissance Convention Center as the location to host this exciting event that will test the minds of great young chess players from all across the country. I hope, if your schedule allows, you will find some time to take advantage of our community's many amenities during your stay.

Schaumburg is the largest center of economic development in the state of Illinois, outside the city of Chicago, but it is also very much a community of neighbors and neighborhoods. Quality of life is important to us and we are constantly working to enhance it for our community as well as those who come to visit. Schaumburg boasts more than 90 miles of bike paths, the Schaumburg Prairie Center for the Arts with a 442-seat theater, gallery, outdoor stage, a beautiful baseball stadium, and the 135-acre Spring Valley Nature Center & Historic Farm site. Offering excellent schools, a superb park district, numerous houses of worship, and superior village services, Schaumburg is a wonderful place to live, work, and raise a family.

On behalf of our community, I wish those of you who are playing the very best of luck in the tournament and I sincerely hope you will find a reason to come visit us again soon.

Sincerely,

A handwritten signature in black ink, appearing to read "Al Larson". The signature is fluid and cursive, with a long horizontal stroke extending to the right.

Village of Schaumburg
Al Larson
Village President

SCHOLASTIC COUNCIL

FM SUNIL WEERAMANTRY

Scholastic Council Representative

On behalf of the Scholastic Council of US Chess, welcome to the 2019 National High School (K-12) Chess Championship.

Players, we know that you will all play hard and put forth your best effort in representing your school. But always remember that there is a larger chess community out there and that nationals offers a unique opportunity to meet new players and make new friends.

Teachers, coaches, and parents, we thank you for your dedication and commitment to scholastic chess, and for taking the time out of your busy schedules to bring your players here. This event would not be what it is without your support. You are welcome to attend the scholastic meeting on Saturday afternoon and share your suggestions to help us continue improving the competitive experience.

Once again, we will present the Scholar-Chessplayer Awards on Sunday. Please come join us as we recognize the 2019 recipients and celebrate their success.

We wish you many happy games and even better memories.



Sunil Weeramantry
Co-chair, Scholastic Council, US Chess



SCHOLASTIC COUNCIL MEETING

Parents, coaches, and all scholastic chess enthusiasts are invited to attend the Scholastic Council meeting held at each US Chess scholastic event.

SATURDAY, MARCH 16, 2:15 P.M. - 3:15 P.M.
CONNECTION

TOURNAMENT STAFF

DIRECTOR OF EVENTS: **Boyd M. Reed**

ASSISTANT DIRECTOR OF EVENTS:

Pete Karagianis

CHIEF TOURNAMENT DIRECTOR:

NTD Glenn Panner

FLOOR CHIEF: **Jeff Wiewel**

BACKROOM CHIEF: **Joe Yun**

GUEST GRANDMASTER: **GM Vladimir Georgiev**

SCHOLASTIC COUNCIL REPRESENTATIVE:

FM Sunil Weeramantry

SECTION CHIEFS:

Christopher Bird

Myron Thomas

Guy Hoffman

Betsy Zacate

Jeff Smith

TD FLOOR STAFF:

Estanislao Anzaldúa

Stephen Plotnick

Malik Brewley

Bradley Rogers

Molly Coy

Samuel Shoykhet

Erik Czerwin

LeRoy Sims

Noreen Davisson

Eric Vigil

James Hodina

Chris Wainscott

Gary Janssen

Donna Wallach

Jiten Patel

FRIENDS & FAMILY CHIEF: **Timothy Just**

PAIRING CHIEFS:

William Buklis

John Simons

Alan Losoff

CHESS CONTROL MANAGER: **Kim Cramer**

CHESS CONTROL STAFF:

Susan Kantor

Michelle Martinez

Korey Kormick

DGT OPERATOR: **Kelly Bloomfield**

ANALYSTS:

GM Mesgen Amanov

WGM Jennifer Shahade

PROGRAM BOOK STAFF:

Senior Director of Strategic Communication,

Daniel Lucas

Publications Editor, **Melinda Matthews**

Art Director, **Frankie Butler**

Creative Content Coordinator, **Natasha Roberts**

Editorial Assistant, Copy Editor, **Alan Kantor**

THIS TOURNAMENT IS HOSTED BY



TAKE OUR NEW HIGH SCHOOL SURVEY!

US Chess is trying to better understand the interests of scholastic chess players, how they perform in the classroom, and how chess compares to other areas of their lives. We have developed a brief survey that will help US Chess get to know its older scholastic players and potentially identify new programs to support them as they head toward college. The survey results will only be presented in aggregate, with individual responses being held in strict confidence. We encourage each player to complete the survey, with or without the assistance of a parent.

For more information about the survey, please contact Carol Meyer, Executive Director, at carol.meyer@uschess.org. To complete the survey, visit

<https://www.surveymonkey.com/r/2019NHSCC>

SHARE YOUR STORIES AND
PHOTOS ON SOCIAL MEDIA
USING #HSChessChamps.

TAKE OUR NATIONAL EVENT SURVEY!

US Chess appreciates your membership, sponsorship and attendance at our national events! Please help us improve the service we provide at our national championships by completing the tournament survey by May 14, 2019. Please go to:

<https://www.surveymonkey.com/r/2019NationalHS>

U.S. WOMEN'S OPEN NATIONAL OPEN



JUNE 11 – 16, 2019
**INTERNATIONAL
CHESS FESTIVAL**
www.VegasChessFestival.com



\$100,000 GUARANTEED PRIZE FUND NATIONAL OPEN

JUNE 12–16, 13–16, 14–16, OR 15–16

7 Rounds (Open 9) ◦ 8 Sections ◦ Top 2 FIDE Rated

40/90, SD/30, +30 ◦ 3-day rounds 1–2 G/60 +10 ◦ 2-day rounds 1–4 G/30 +5

Open Section 9 Rounds in 5 days with **FIDE Norms Possible**

Mixed Doubles Prizes for Best Male/Female Combined Scores

Beginners Section with 3 Schedules of 6 Rounds Each Day at G/30 +5

Winner is a US Chess National Champion and receives a replica of the Edmondson Cup

\$3,500 GUARANTEED PRIZE FUND

U.S. WOMEN'S OPEN

TUESDAY & WEDNESDAY JUNE 11–12

5 Round Swiss ◦ US Chess & FIDE Rated

Game/90, + increment 30

Winner is a US Chess National Champion and receives the Women's Cup



GM Walter Browne
1949-2015

\$5,000 GUARANTEED PRIZE FUND WALTER BROWNE MEMORIAL NATIONAL OPEN BLITZ CHAMPIONSHIP

SATURDAY JUNE 15 AT 10:30 P.M.

US Chess & FIDE Blitz Rated

6 Double Rounds ◦ Game/3 + increment 2

Winner receives the Walter Shawn Browne Cup



INTERNATIONAL YOUTH CHAMPIONSHIP

JUNE 15–16

6 Round Swiss ◦ Game/60 d5

4 Sections by Age and Rating

14 & Under Open and Reserve (*rated under 1000*)

9 & Under Open and Reserve (*rated under 800*)

Dozens of Individual & Team Trophies

plus Merchandise Prizes Awarded in Each Section

Top prize in each section is a computer with software & videos worth over \$1,000.

Grandmaster Simul

Featured GM TBA

THURSDAY 3:00 P.M.

Simul for Kids 14 & under

SATURDAY 6:30 P.M.

Grandmaster Chess Camp

For All Ages

THURSDAY 10 A.M. – 6:00 P.M.

BLITZ & ACTION TOURNAMENTS

NATIONAL OPEN ACTION QUADS THURSDAY 2:30 P.M.

YOUTH BLITZ (14 & UNDER) FRIDAY 6:30 P.M.

8 PLAYER BLITZ ROUND ROBINS FRIDAY 11:00 P.M.

WALTER BROWNE MEMORIAL BLITZ SATURDAY 10:30 P.M.

8 PLAYER BLITZ ROUND ROBINS SUNDAY 10:30 P.M.

SPIRIT OF CHESS GM INVITATIONAL SUNDAY 10:30 P.M.

Free Lectures & Analysis

FRIDAY – SUNDAY

Youth Side Events (age 14 & under)

Trophy Tournament FRIDAY 10:00 A.M.

Youth Blitz FRIDAY 6:30 P.M.

Puzzle Solving Competition SATURDAY 6:00 P.M.

Simul for Kids SATURDAY 6:30 P.M.

Early Entry Prize Drawing

Every player who enters the National Open or the International Youth Championship is automatically entered in a drawing for prizes worth more than the price of the entry fee. The earlier you enter the more chances you have to win.

Westgate Las Vegas Resort & Casino

A short walk from The Strip with a convenient **on-site monorail station** for easy access to the rest of The Strip. Call 800-732-7117 and ask for the chess rate (group code **SVCF9R**) of \$69 per night (\$95 Friday & Saturday) or reserve a room online at www.VegasChessFestival.com/hotel/.

Win Free Hotel Stay During Chess Festival

Reserve your room early for a chance to win your stay for free. Earlier reservations have more chances to win!

THURSDAY MARCH 14

8:00 a.m. - 8:00 p.m.	Chess Control	Schaumburg Ballroom Foyer
11:00 a.m. - 2:00 p.m.	Bughouse Tournament	Convention Center South
5:00 p.m. - 9:00 p.m.	Blitz Tournament	Convention Center South
	Bookstore	Schaumburg E/F/G
	T-Shirts, Other Vendors (Thursday-Sunday)	Schaumburg West-East
	Girls Club	Schaumburg H

FRIDAY MARCH 15

8:00 a.m. - 8:00 p.m.	Skittles	Schaumburg West-East
8:00 a.m. - 8:00 p.m.	Chess Control	Schaumburg Ballroom Foyer
9:00 a.m. - 11:00 a.m.	Simultaneous Exhibition - GM Vladimir Georgiev	Schaumburg West-East
9:30 a.m. - 10:30 a.m.	My First Tournament Seminar	Connection
11:00 a.m. - 9:00 p.m.	Bookstore	Schaumburg E/F/G
12:45 p.m. - 1:00 p.m.	Opening Ceremony	Convention Center South
1:00 p.m. - 5:10 p.m.	Round One	Convention Center South
2:30 p.m. - 4:30 p.m.	"All Comers" Blitz - GM Vladimir Georgiev	Schaumburg West-East
2:30 p.m. - 3:00 p.m.	Girls Club appearance by GM Jeffery Xiong	Schaumburg H
7:00 p.m. - 11:00 p.m.	Round Two	Convention Center South

SATURDAY MARCH 16

8:00 a.m. - 11:00 p.m.	Skittles	Schaumburg West-East
8:00 a.m. - 8:00 p.m.	Chess Control	Schaumburg Ballroom Foyer
8:00 a.m. - 9:00 p.m.	Bookstore	Schaumburg E/F/G
8:50 a.m. - 9:00 a.m.	Presentation of Top Five Blitz Individual Winners with GM Jeffery Xiong	Convention Center South
9:00 a.m. - 1:10 p.m.	Round Three	Convention Center South
10:00 a.m. - 11:00 a.m.	The Benefit of Chess as an Educational Tool Seminar	Connection
10:30 a.m. - 11:40 a.m.	Round One: Friends and Family	Euphoria
11:30 a.m. - 12:30 p.m.	Grandmaster Lecture - GM Vladimir Georgiev	Connection
12:30 p.m. - 1:40 p.m.	Round Two: Friends and Family	Euphoria
1:50 p.m. - 2:00 p.m.	Presentation of Top Five Blitz Team Winners with GM Jeffery Xiong	Convention Center South
2:00 p.m. - 6:10 p.m.	Round Four	Convention Center South
2:15 p.m. - 3:15 p.m.	Scholastic Meeting	Connection
2:30 p.m. - 4:30 p.m.	"All Comers" Blitz - GM Vladimir Georgiev	Schaumburg West-East
2:30 p.m. - 3:40 p.m.	Round Three: Friends and Family	Euphoria
4:30 p.m. - 5:40 p.m.	Round Four: Friends and Family	Euphoria
6:50 p.m. - 7:00 p.m.	Presentation of Top Five Bughouse Teams with GM Jeffery Xiong	Convention Center South
7:00 p.m. - 11:10 p.m.	Round Five	Convention Center South
7:00 p.m. - 11:10 p.m.	Round Five: Live stream of top boards	Imagination

SUNDAY MARCH 17

8:00 a.m. - 11:00 p.m.	Skittles	Schaumburg West-East
8:00 a.m. - 2:30 p.m.	Chess Control	Schaumburg Ballroom Foyer
8:00 a.m. - 6:00 p.m.	Bookstore	Schaumburg E/F/G
8:50 a.m. - 9:00 a.m.	Presentation of Scholar-Chessplayer Awards	Convention Center South
9:00 a.m. - 1:10 p.m.	Round Six	Convention Center South
9:00 a.m. - 1:10 p.m.	Round Six: Live stream of top boards	Imagination
10:00 a.m. - 11:00 a.m.	Grandmaster lecture - GM Jeffery Xiong	Connection
11:30 a.m. - 12:30 p.m.	Preparing for International Youth Events Seminar	Connection
2:00 p.m. - 6:10 p.m.	Round Seven	Convention Center South
2:00 p.m. - 6:10 p.m.	Round Seven: Live stream of top boards	Imagination
2:30 p.m. - 4:30 p.m.	“All Comers” Blitz - GM Vladimir Georgiev	Schaumburg West-East
Approximately 7:00 p.m.	Awards Ceremony	Convention Center South

SAFETY FIRST!

Your well being is a top priority for US Chess. Below we have listed some items that may be of help to the players, parents, coaches, or groups who are participating in the 2019 National High School (K-12) Championship.

BEFORE YOU ARRIVE:

Medical and contact information.

If you are with a group, it's recommended that each participant fill out a medical form listing their parents, coach, or another adult who can allow medical treatment if necessary. All participants should have contact information on them in case of an emergency. Those who are with a group should have contact information for both their parents and the person appointed as chaperone.

BEFORE THE TOURNAMENT:

Tour the property.

After your arrival it's a good idea to tour the property so everyone becomes familiar with the property's layout. Look for your main playing hall, Skittles area, and Chess Control.

PICK YOUR SPOT:

Know where to meet.

Determine where players should meet their groups or adult chaperone(s) after their games are finished. Remember, anyone who is lost should go immediately to Chess Control.

DURING THE TOURNAMENT:

Please monitor behavior.

Hotels as well as tournaments have safety rules that everyone must follow. Running in the halls, climbing on furniture or art work, playing outdoor games inside, such as throwing balls, is usually frowned upon and can result in injury or costly damages.

US Chess wants everyone to have a wonderful experience. You can help keep it positive by following the above recommendations. For more safety tips, see our video on YouTube (search for "Tournament Safety Tips from US Chess").

NEED TO MISS A ROUND?

If you need to miss a round, please report your absence at least one hour prior to the start of a round. If we don't know and you don't show, you will be dropped from the tournament! Even if late, let us know. It's not any fun getting paired and not having an opponent!

A maximum of one half-point bye is available in the first six rounds if requested by the start of the first round. Zero-point byes shall be available for all rounds and must be requested at least two hours before the start of the round they are requested for.

INFORMATION

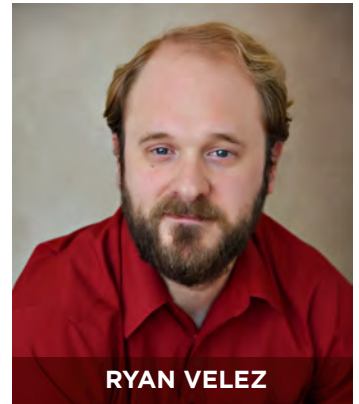


RESULTS



EDUCATIONAL SEMINARS WITH RYAN VELEZ

Ryan Velez is a national master, senior level tournament director, chess author, active player, and US Chess Executive Board member. With over 20 years' teaching experience—in classrooms and through private and online lessons—Ryan can speak about getting involved in chess from many different perspectives. Join Ryan for three seminars as he explains some critical ideas about successful chess parenting and what it takes to become successful in scholastic chess.



MY FIRST TOURNAMENT

FRIDAY, MARCH 15, 9:30 A.M. - 10:30 A.M. | CONNECTION

THE BENEFIT OF CHESS AS AN EDUCATIONAL TOOL

SATURDAY, MARCH 16, 10:00 A.M. - 11:00 A.M. | CONNECTION

PREPARING FOR INTERNATIONAL YOUTH EVENTS

SUNDAY, MARCH 17, 11:30 A.M. - 12:30 P.M. | CONNECTION

SPECIAL GUEST: GM JEFFERY XIONG

GM Jeffery Xiong is making a special appearance at this year's event. Awarded the prestigious Samford Fellowship in 2017, Jeffery is the 2016 World Junior Chess Champion and ranks among the world's top 100 players. Known for his creativity on the board and his maturity in defeat, Jeffery will be competing in this year's U.S. Chess Championship.



GIRLS CLUB APPEARANCE

FRIDAY, MARCH 15, 2:30 P.M. - 3:00 P.M. | SCHAUMBURG H

LIVE STREAM GUEST APPEARANCE

SUNDAY, MARCH 17, 9:00 A.M. - 1:10 P.M. | IMAGINATION

GRANDMASTER LECTURE

SUNDAY, MARCH 17, 10:00 A.M. - 11:00 A.M. | CONNECTION

Jeffery will be presenting awards to the top finishers in bughouse and blitz. Please check the schedule on page ten for times.

WHITE: _____

BLACK: _____

BOARD: _____ DATE: _____

SECTION: _____

WHITE	BLACK	WHITE	BLACK	WHITE	BLACK
1		23		45	
2		24		46	
3		25		47	
4		26		48	
5		27		49	
6		28		50	
7		29		51	
8		30		52	
9		31		53	
10		32		54	
11		33		55	
12		34		56	
13		35		57	
14		36		58	
15		37		59	
16		38		60	
17		39		61	
18		40		62	
19		41		63	
20		42		64	
21		43		65	
22		44		66	

WHITE WINS BLACK WINS DRAW

WHITE: _____
 BLACK: _____
 BOARD: _____ DATE: _____
 SECTION: _____

WHITE	BLACK	WHITE	BLACK	WHITE	BLACK
1		23		45	
2		24		46	
3		25		47	
4		26		48	
5		27		49	
6		28		50	
7		29		51	
8		30		52	
9		31		53	
10		32		54	
11		33		55	
12		34		56	
13		35		57	
14		36		58	
15		37		59	
16		38		60	
17		39		61	
18		40		62	
19		41		63	
20		42		64	
21		43		65	
22		44		66	

WHITE WINS BLACK WINS DRAW

WHITE: _____

BLACK: _____

BOARD: _____ DATE: _____

SECTION: _____

WHITE		BLACK		WHITE		BLACK		WHITE		BLACK	
1		23		45							
2		24		46							
3		25		47							
4		26		48							
5		27		49							
6		28		50							
7		29		51							
8		30		52							
9		31		53							
10		32		54							
11		33		55							
12		34		56							
13		35		57							
14		36		58							
15		37		59							
16		38		60							
17		39		61							
18		40		62							
19		41		63							
20		42		64							
21		43		65							
22		44		66							

WHITE WINS BLACK WINS DRAW

WHITE: _____

BLACK: _____

BOARD: _____ DATE: _____

SECTION: _____

	WHITE	BLACK		WHITE	BLACK		WHITE	BLACK
1			23			45		
2			24			46		
3			25			47		
4			26			48		
5			27			49		
6			28			50		
7			29			51		
8			30			52		
9			31			53		
10			32			54		
11			33			55		
12			34			56		
13			35			57		
14			36			58		
15			37			59		
16			38			60		
17			39			61		
18			40			62		
19			41			63		
20			42			64		
21			43			65		
22			44			66		

WHITE WINS BLACK WINS DRAW

WHITE: _____
 BLACK: _____
 BOARD: _____ DATE: _____
 SECTION: _____

WHITE	BLACK	WHITE	BLACK	WHITE	BLACK
1		23		45	
2		24		46	
3		25		47	
4		26		48	
5		27		49	
6		28		50	
7		29		51	
8		30		52	
9		31		53	
10		32		54	
11		33		55	
12		34		56	
13		35		57	
14		36		58	
15		37		59	
16		38		60	
17		39		61	
18		40		62	
19		41		63	
20		42		64	
21		43		65	
22		44		66	

WHITE WINS BLACK WINS DRAW

WHITE: _____

BLACK: _____

BOARD: _____ DATE: _____

SECTION: _____

WHITE	BLACK	WHITE	BLACK	WHITE	BLACK
1		23		45	
2		24		46	
3		25		47	
4		26		48	
5		27		49	
6		28		50	
7		29		51	
8		30		52	
9		31		53	
10		32		54	
11		33		55	
12		34		56	
13		35		57	
14		36		58	
15		37		59	
16		38		60	
17		39		61	
18		40		62	
19		41		63	
20		42		64	
21		43		65	
22		44		66	

WHITE WINS BLACK WINS DRAW

WHITE: _____

BLACK: _____

BOARD: _____ DATE: _____

SECTION: _____

WHITE	BLACK	WHITE	BLACK	WHITE	BLACK
1		23		45	
2		24		46	
3		25		47	
4		26		48	
5		27		49	
6		28		50	
7		29		51	
8		30		52	
9		31		53	
10		32		54	
11		33		55	
12		34		56	
13		35		57	
14		36		58	
15		37		59	
16		38		60	
17		39		61	
18		40		62	
19		41		63	
20		42		64	
21		43		65	
22		44		66	

WHITE WINS BLACK WINS DRAW

TOURNAMENT RULES

2019 NATIONAL HIGH SCHOOL (K-12) CHAMPIONSHIP

Note: Posted procedures at the tournament site supersede these published procedures.

This event is sanctioned by the United States Chess Federation and conducted by its rules. The 7th Edition of the *US Chess Federation's Official Rules of Chess with Rulebook Changes (2003-2018)* and the *US Chess National Scholastic Chess Tournament Regulations*, are the basis for all the rules and regulations. The following rules are included here to answer frequently-asked questions, note any changes to the rule book, and to remind players of useful information. ***They are not intended to supersede or modify the US Chess Rulebook or the US Chess National Scholastic Chess Tournament Regulations.***

TOURNAMENT DIRECTORS (TDs)

TDs will be on the tournament floor at all times to assist players in the event of any problem or question. To summon a director, raise your hand and keep it in the air until a TD comes to assist you. Remember that a TD will generally not interfere with your game. ***It is up to you to make a claim.*** If you think a TD has ruled incorrectly concerning your game, you should ask for another TD and make an appeal immediately.

CLOCKS AND TIME CONTROLS

The time control is game in 120 minutes with 5-second delay (G/120, d5). Digital clocks with delay capability must have the 5-second delay set. Analog clocks should be set at 4:00. The game must be either won or drawn before the flag falls at 6:00. The player whose flag falls first loses the game unless the opponent has insufficient mating material or both flags have fallen. In either of those exceptions, the game is drawn. ***The TD will tell you which way to face your clock.*** A digital clock with time delay set is preferable to any other clock. Therefore, if White has such a clock available and Black does not, White's clock should be used. If a time delay clock is used, it must be set with the time delay in force from move one. When using the time delay feature, set the clocks at 120 minutes (2 hours) with a five-second "delay," or "Bronstein".

START OF THE GAME

White's clock must be started as soon as the TD announces that the round has begun. Black's clock may not be started before White has made a move. If a clock is not available at the start of a round, any elapsed time before one becomes available will be evenly split between players. If both players are late for the start of a round, the first to arrive must split the elapsed time before starting the clock.

RECORDING MOVES

Each player is required to record the moves, move after move. Neither player is required to keep score if either player has less than five minutes at the end of the game. This applies to all players in this tournament, regardless of age or grade level.

ELECTRONIC RECORDING DEVICES (ERD)

Only the MonRoi, eNotate, PlyCounter and Chess NoteR are authorized for use at this event. Other privately or commercially available programs or devices are forbidden. Those players using an approved ERD must, at all times, play the intended move on the board first, before recording it on the device. ***Further, the ERD must be kept on the table throughout the game; players may not take an ERD outside the tournament hall while a game is in progress. Also, no electronic devices, may be taken to the restrooms.*** Failure to follow these procedures may result in penalties if observed by a TD, even without a claim from the opponent.

TOUCH-MOVE

If you intentionally touch a piece when it is your turn, that piece must be moved if you can do so legally. If you intentionally touch an opponent's piece when it is your turn to move, the opponent's piece must be captured if you can do so legally. You must clearly say "I adjust" or "j'adoube" before touching a piece if you want to adjust that piece on the board. You may do so only when it is your turn. If you accidentally release a piece on an unintended but legal square, you must leave it on that square. You may not touch any pieces on the board when it is not your turn.

ILLEGAL MOVES

If a player discovers that one of his/her or the opponent's last 10 moves was illegal, the player

should summon a tournament director immediately. The TD can reinstate the position to what it was before the illegal move, and the game shall continue by applying the touch-move rule to the move replacing the illegal move. Clocks will not be reset. If neither player has used one hour, there will be no time penalty assessed for an illegal move. If either player has used one hour, then any illegal move will result in two minutes being added to the opponent of the player making the illegal move. A player must raise his/her hand and claim an illegal move. The TD will not do so; neither may parents, coaches, nor other spectators.

CHECK

Announcing check is not necessary. It is the responsibility of the opponent to notice the check. A player who does not notice the check may suffer serious consequences (see the touch-move rule).

TIME FORFEITS

Only the players involved in a game may claim a Time Forfeit in that game. No parent, coach, spectator, other players or TD may make such a claim or bring the fall of a flag to the attention of the players. A player may claim a Time Forfeit only if he/she stops the clocks before the claimant's own time runs out. If both flags are down, the game is a draw.

LATE ARRIVALS

A player who is more than one hour late for a scheduled round loses the game by forfeit and will not be paired for the next round unless reinstated by the Chief TD. The hour is measured from when the round was started. Request for reinstatement, if desired, must be made by the player, coach or parent, to the Chief Tournament Director or Floor Chief.

DRAWS

If you want to offer a draw to your opponent, you should do so after you make a move but before you start your opponent's clock. Your opponent may decline the draw by saying so or by moving a piece. A draw offer is valid, and may not be retracted, until it is accepted or declined by your opponent. If both players agree to a draw, then the game is over regardless of previous checkmate, stalemate or illegal positions. A reasonably complete and accurate scoresheet is required to claim a draw by triple occurrence of position or under the 50-move rule. If such a claim is found to be incorrect, two minutes will be added to the opponent's remaining time.

CLAIMS OF INSUFFICIENT LOSING CHANCES

No claim of insufficient losing chances can be made if time delay is already in force on the clock being used. However, if the game clock cannot be set in delay mode, a player on the move who has no more than two minutes left may stop the clock and ask the TD to declare the game a draw on the grounds that the player has insufficient losing chances. Such a claim is also a draw offer. The TD may, at his discretion, place a digital clock, set with time-delay at five seconds, on the game. If this is done, the claimant gets half of his remaining time up to but not exceeding one minute, while the opponent's time is not adjusted and the game continues until a result is achieved. If the claim is obviously correct, the TD should grant the draw. If the claim is obviously incorrect, the TD may deduct up to one minute from the claimant's time and the game should continue. If the claim is unclear, but no time-delay clock is available to insert on the game, the TD may reserve a decision while he watches the continuation of the game or may ask the players to re-claim after restarting the game.

ANALYSIS OF GAMES

Players may not analyze their games in the tournament room. Analysis should be conducted in the skittles area or elsewhere.

REPORTING RESULTS

Immediately upon completion of the game, the players should carefully complete and sign the results sheet at their board, without disturbing the position, and hold the results sheet up in the air until a TD comes to get it. **Players should not sign the results sheet until the correct result has been recorded! Both players must remain at their board until a TD takes the results sheet.** Only after the TD has done so should both players set up the pieces and leave the playing area.

PAIRINGS

The WinTD pairing program will be used for this tournament. Players will generally be paired with other players who have the same score each round. Players should not be assigned the same color three times in a row unless there is no other way to pair the score group or unless necessary to equalize colors. Every reasonable effort will be made to avoid pairing players from the same school together. One exception is the last round when more than half of the players in the top group are from the same school. In this case, some might be paired together. You can find other situations in Paragraph 18.1 of the Scholastic Regulations. If you believe there is a pairing error, report it to a TD

immediately! Once the round starts, it will probably be too late to make any changes. Parents and coaches should check the correctness of the wallcharts every round. Errors in scores reported after two or more rounds would most likely not be corrected.

CONDUCT OF PLAYERS

Please try to keep as quiet as possible on the tournament floor so that you do not disturb other players. **You may not speak to anyone while your game is in progress unless you have asked a TD to be present.** If there is a problem of any kind during your game, call a TD immediately. If you wait until after your game is over, the result probably cannot be changed even if your claim was correct. Be careful what you sign—once you have signed your result sheet, and agreed to the result on it, it is very difficult to change later on. You may not consult notes, chess books, computers, or other materials during the game. You may not bring food or soda into the tournament hall at any time. If you need to go to the bathroom while your game is in progress, you must use the bathrooms designated for tournament players. You do not need to ask permission from the TD for this. You may not leave the tournament room during your game other than to go to the restroom if it is outside the tournament room. Exceptions can be made only if you have permission and are accompanied by a TD.

HALF-POINT BYE

One half-point bye will be available during any round, if requested by 11 am on Friday, the first day of the event. On-site registrations after 11 am will receive a ½-point bye for the first round unless otherwise determined by the Chief TD. The Chief TD may grant a ½-point bye during any round, even after the cut-off, for unusual circumstances.

INTERFERENCE

No interference in any game by spectators or other players will be tolerated. Penalties include expulsion from the tournament. Only the player involved may point out irregularities. This should be done by raising your hand to summon a TD.

OTHER RULES

This is an individual tournament with team scoring. In each section, a team may have as many players as desired, but **only the top four scores count for team results and tiebreaks.** A school must have at least two players in a section in order to be eligible for team awards in that section. Players and coaches/parents are responsible for confirming the accuracy of any and all player information.

PENALTIES

Penalties for rules violations are at the discretion of the TD and may vary from warnings and time penalties to forfeitures and expulsion from the tournament.

CELL PHONES

Cell phone use is not permitted in the tournament hall by the players. **CELL PHONES MUST BE TURNED OFF IN THE PLAYING HALLS.** If a cell phone rings, a player will be assessed a time penalty on the first offense, and loss of game declared for each repeat offense during the tournament. A player using his cell phone for calling, answering a call, sending a text message, or reading text messages while the game is in

progress may be forfeited instantly. **We strongly encourage players to leave their cell phones with their parents or coaches.** If a player brings a cell phone into the playing hall, it must be turned off and stowed in a backpack, purse or chess bag for the duration of the game. Once the game begins, the cell phone must remain stowed away. Until the game ends, the player may not carry the cell phone in your hand, pocket or anywhere else. **The player must not take it to the bathroom or anywhere else.** We refer players, parents and coaches to Section 21.5 of the Scholastic Regulations.

WHAT TROPHY DID I WIN?

In cases of ties, trophies cannot be split. We will use tiebreaks to award both individual and team trophies. Tied individuals and teams are considered co-champions for their section, but will be given trophies based on tiebreaks. For individual trophies, place trophies are awarded before rating class trophies.

TIEBREAKS

Below is the tiebreak order in which individual ties are broken in this event and an explanation of how to calculate the tiebreak total.

Individual ties for trophies are broken by Modified Median, Median, Solkoff, Sonnenborn-Berger, Cumulative, and Coin Flip, in that order. Players can win only one individual trophy. Place trophies take precedence over all other trophy awards. The team tiebreaks are Total Individual Median, Total Solkoff, Total Sonnenborn-Berger, Total Cumulative, and Coin Flip in that order.

1. Modified Median: First, the Median system sums the scores of the opponents of the player in the tie and then subtracts the high and low score. The Modified Median system for players with a plus score only removes the lowest opponent's score. For an even score, the highest and lowest opponent scores are removed, while the highest score is removed for those players with a minus score. Please note that opponents' scores are adjusted for unplayed games before being added into the sum. Unplayed game(s) of an opponent are adjusted per rule 34E1 in the rulebook.

2. Median: Definition above.

3. Solkoff: The Solkoff system is the same as the Median system except no scores are removed.

4. Sonnenborn-Berger: The Sonnenborn-Berger system adds the final score of all players they defeated with ½ the sum of the opponents' scores with whom the player drew. Nothing is added for losses or unplayed games. Example: If you beat a player who scored 3 points, drew a player who scored 4 points and lost to a player who scored 5 points, your tiebreak would be 3 for the win, 2 for the draw (½ of 4) and 0 for the loss for a total of 5 tiebreak points.

5. Cumulative: The Cumulative system adds the round-by-round total score of the player. So a win-loss-win would yield 1+1+2 or four points. One point is subtracted from the total for every unplayed win or one-point bye. One-half point is subtracted from the total for every unplayed draw or half-point bye.

6. Coin Flip

Approved Electronic Recording Devices

From Appendix F of the National Scholastic Regulations

Approved electronic recording devices are in common use at US Chess National Scholastic Tournaments. US Chess no longer requires players to “register” their device with the Tournament Director (TD) before game play. Players who own these devices are responsible for setting and operating them according to the instructions below. Players who do not own an approved electronic recording device should expect they may be paired against players who do.

DEVICE OWNERS SHOULD:

1. Set the device in the appropriate mode for recording moves.
2. Turn off or disable any setting(s) that could alert the player of illegal moves.
3. Make the move on the board before recording the move on the device.
4. Keep the device on the table (or immediately above the table) in plain view of the opponent at all times during the game.
5. Touch the device only when recording moves.
6. Never input “variations” in the device at any time during a game.
7. If asked by the opponent to see the player’s device to enter missing moves on their scoresheet, the player will set the device mode to algebraic (or the appropriate mode that allows the opponent to see all previous moves) and turn the device around so the opponent can view the display screen. The device will remain on the table (or immediately above the table) at all times.
8. Never take their device with them if they leave the board while the game is still in progress.
9. Be ready to take written notation if their device malfunctions (if notation is required during game play in this section). If this happens, the player should begin notation with the next move and fill-in missing moves when the player is on move by borrowing the opponent’s scoresheet or device.
10. Summon a TD when questions arise.

OPPONENTS:

1. May ask the player who owns the device to show them the device, explain its use, and ensure it is correctly set for game play for this tournament.
2. May not ask the device owner to take written notation instead of using the device.
3. May ask the device owner to see the player’s device for the purpose of entering missing moves on his/her own scoresheet. When this occurs, the device will remain on the table.
4. Should summon a TD when questions arise.

COACHES/PARENTS:

1. Are strongly encouraged to assist their players in understanding proper tournament etiquette regarding these devices before tournament play begins.
2. Should summon a TD when questions arise before the start of a game.

TOURNAMENT DIRECTORS:

1. Should check a player’s device to verify that it is correctly set when requested to do so by a player.
2. Circulate among the players during competition ensuring proper usage of the device.
3. Are not responsible for knowing how to operate each type of device.



PLYCOUNTER



eNOTATE



CHESS NOTE R



**MON ROI PERSONAL
CHESS MANAGER**

SPECTATOR POLICY

In 2018, the Scholastic Council and the Executive Board approved changes to the Scholastic Regulations that updated rules for spectators at the following scholastic events:

- National Elementary (K-6) Championship
- National Junior High (K-9) Championship
- National High School (K-12) Championship
- National K-12 Grades Championship

With the change in policy, playing halls at scholastic events organized by US Chess are open only to the following people while games are in progress:

- Players with games in progress in that room
- Tournament staff
- Press and other attendees with badges authorizing their access
- Other persons directly authorized by the US Chess Director of Events

This means that parents, coaches, and other attendees who do not fall into the four categories above must leave the playing hall before the tournament director in charge of the playing hall will begin play. Once a player in that room has reported a result, that player also is considered a spectator and must leave the room for the remainder of that round. Parents and coaches should instruct their players who have completed games not to go back into the playing hall.

Attendees are strongly encouraged to use the skittles area both as a waiting room and as a meeting place after each round. Most exhibits and vendors will be housed there. Teams also can reserve a room at national scholastic events, but availability is limited and there is both a cost and a specific procedure for reserving one. Team room information will be linked on each tournament website. For parents and coaches who choose to wait in front of the main playing areas, US Chess has reconfigured its event setups to move all exhibits and vendors out of the hallways, thereby maximizing available space. Exits from the playing hall will be designated and clearly marked with signage, both inside and outside.

Please visit uschess.org, click on *CLO*, and search “Spectator policy” for further details. Penalties for violating this policy are at the discretion of the chief tournament director.

PHOTOGRAPHY POLICY FOR NATIONAL SCHOLASTIC EVENTS

Photos and/or videos taken at US Chess national scholastic events may be published in the following manner: US Chess print publications; US Chess digital platforms including www.uschess.org, social media, and YouTube; and within press releases.

By attending a US Chess national event, photos and videos of you or your children at the event may be published in any or all of the above-mentioned media and devices at the sole discretion of US Chess. You are consenting to photographs being taken and shared through the above-listed platform(s) unless you expressly revoke your consent by notifying the US Chess Senior Director of Strategic Communication Daniel Lucas at dllucas@uschess.org or 931.200.5509.

Minors will not be identified by name in photo captions unless they are competing on one of the top boards or have won a championship. Championship-section winners are generally identified in our photo captions by first and last name and hometown.

WELCOME GRANDMASTER VLADIMIR GEORGIEV



GM Vladimir Georgiev is a Bulgarian-Macedonian chess grandmaster. Born August 27, 1975, in Sofia, Bulgaria, Georgiev became an international master in 1995 and earned his grandmaster title in 2000.

Georgiev first caught the eye of the chess world in 1992 when he finished second in the European Junior Chess Championship. In 1995, he became Bulgarian national champion and the champion of Macedonia in 2007

Georgiev has trained and helped many world class chess players and teams in their pursuit of chess success, including former Women's World Chess Champion GM Antoaneta Stefanova, 2016 World Junior Champion GM Jeffery Xiong, 2015 Women's World Chess Championship runner up WGM Natalija Pogonina, and 2017 World Junior Champion GM Aryan Tari. He believes that trust and mutual understanding are essential to good coaching.

“ALL COMERS” BLITZ

FRIDAY, MARCH 15, 2:30 P.M. - 4:30 P.M.
SCHAUMBURG WEST-EAST

SIMULTANEOUS EXHIBITION

FRIDAY, MARCH 15, 9:00 A.M. - 11:00 A.M.
SCHAUMBURG WEST-EAST

“ALL COMERS” BLITZ

SATURDAY, MARCH 16, 2:30 P.M. - 4:30 P.M.
SCHAUMBURG WEST-EAST

GRANDMASTER LECTURE

SATURDAY, MARCH 16, 11:30 A.M. - 12:30 P.M.
CONNECTION

“ALL COMERS” BLITZ

SUNDAY, MARCH 17, 2:30 P.M. - 4:30 P.M.
SCHAUMBURG WEST-EAST

FRIENDS & FAMILY TOURNAMENT

4SS, G/30. \$20 ONSITE REGISTRATION ONLY.
RATED AND UNRATED SECTIONS. TROPHIES FOR
EACH CATEGORY OF COMBINED
PLAYER/STUDENT RESULTS.

SATURDAY, MARCH 16
EUPHORIA

10:30 A.M., 12:30 P.M., 2:30 P.M., 4:30 P.M.

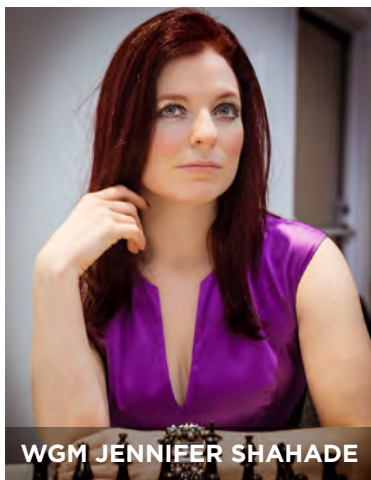
BUGHOUSE TOURNAMENT

THURSDAY, MARCH 14
11:00 A.M. - 2:00 P.M.
CONVENTION CENTER SOUTH

BLITZ TOURNAMENT

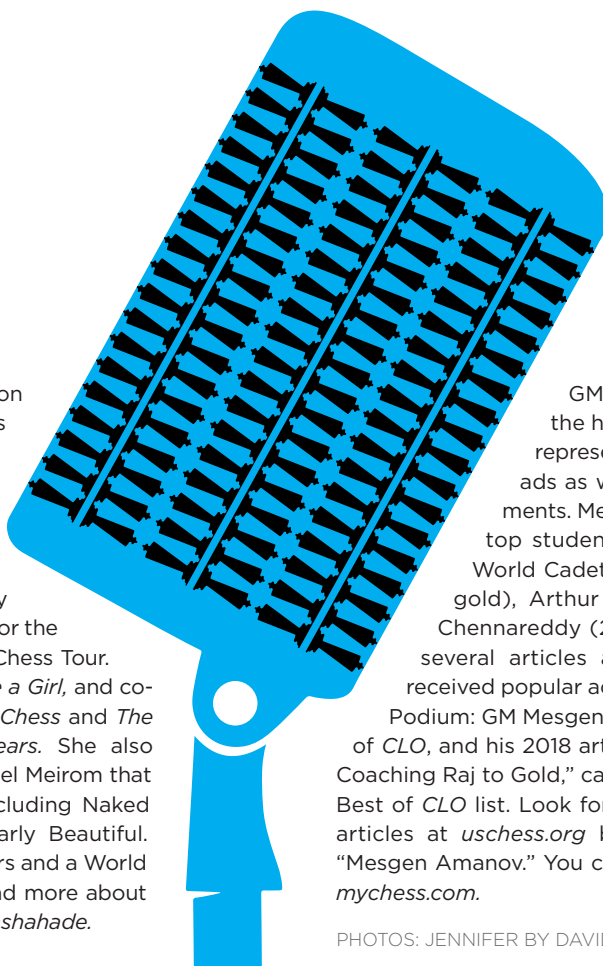
THURSDAY, MARCH 14
5:00 P.M. - 9:00 P.M.
CONVENTION CENTER SOUTH

LIVESTREAM HOSTS



WGM JENNIFER SHAHADE

Two-time U.S. Women's Chess Champion WGM Jennifer Shahade is the Women's Program Director for US Chess and is a key part of its digital team as a consultant and contributor to *CLO* at uschess.org, where she hosts the "Ladies Knight" podcast. Jennifer enters the streaming arena with many years of experience as a commentator for the U.S. Chess Championships and Grand Chess Tour. She authored *Chess Bitch* and *Play Like a Girl*, and co-authored *Marcel Duchamp: The Art of Chess and The Sinquefeld Cup: Celebrating Five Years*. She also created art projects with husband Daniel Meiom that combine chess, art, and feminism, including *Naked Chess*, *Hula Chess*, and *Not Particularly Beautiful*. Jennifer is an ambassador for *PokerStars* and a World Chess Hall of Fame board member. Find more about Jennifer on Instagram and Twitter @jenshahade.



GM MESGEN AMANOV

GM Mesgen Amanov from Turkmenistan is the highest-rated player in his country. He has represented Turkmenistan in four Chess Olympiads as well as in numerous international tournaments. Mesgen has gained recognition for coaching top students all over the United States, including World Cadet medalists Aren Emrikian (2017 Under-8 gold), Arthur Xu (2017 Under-10 silver), and Yuvraj Chennareddy (2018 Under-8 gold). He also has written several articles about his training methods that have received popular acclaim. Mesgen's 2017 article, "Path to the Podium: GM Mesgen Amanov on Training," won the 2017 Best of *CLO*, and his 2018 article, "A Perfect Triangle: GM Amanov on Coaching Raj to Gold," captured the number two spot on the 2018 Best of *CLO* list. Look for more about Mesgen and check out his articles at uschess.org by clicking on *CLO* and searching for "Mesgen Amanov." You can also find him on his website, improve-my-chess.com.

PHOTOS: JENNIFER BY DAVID LLADA; MESGEN BY ERIC ROSEN

LIVESTREAM OF ROUND FIVE TOP BOARDS

SATURDAY, MARCH 16, 7:00 P.M. - 11:10 P.M. | IMAGINATION

LIVESTREAM OF ROUND SIX TOP BOARDS WITH SPECIAL GUEST GM JEFFERY XIONG

SUNDAY, MARCH 17, 9:00 A.M. - 1:10 P.M. | IMAGINATION

LIVESTREAM OF ROUND SEVEN TOP BOARDS

SUNDAY, MARCH 17, 2:00 P.M. - 6:10 P.M. | IMAGINATION

BOOKS AND OTHER PUBLICATIONS

...ESS LIFE EVERY
...OUR INFOGRAPHICS
...OTHER REGULAR FEATURES.



CHESS BOOK, 1471
The Göttingen manuscript, the first book dedicated solely to chess

ENGLISH CHESS BOOK, 1474
The Game and Playe of Chesse by William Caxton

CHESS COLUMN, 1813
in *The Liverpool Mercury*

CHESS PERIODICAL, 1836
Le Palamède, founded in France by Louis-Charles Mahé de la Bourdonnais.

CHESS FIRSTS

US CHESS FIRSTS

U.S. OPEN ORGANIZED BY US CHESS, 1940
in Dallas; Reuben Fine won

US CHESS RATING LIST, 1949
Reuben Fine and Samuel Reshevsky were 1 and 2, respectively.

US CHESS EVENT USING SWISS SYSTEM, 1945
U.S. Open in Corpus Christi

ALGEBRAIC NOTATION IN CHESS LIFE, 1969
in Benko's Bafflers

Check *Chess Life* throughout 2019 for fun facts about US Chess as we celebrate our 80th anniversary.

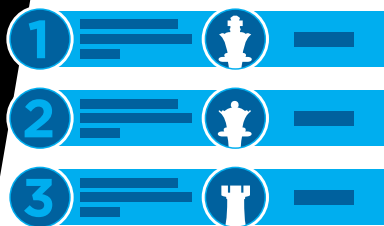


BLINDFOLD GAME, AROUND 665-714
first blindfold game attributed to Sa'id bin Jubair (He did *not* use a stationary bike!)

ALGEBRAIC NOTATION, 12TH CENTURY
A form of algebraic chess notation appeared in a European document referred to as *MS. Paris Fr. 1173 (PP.)*.

TOURNAMENT, 1575
Italy versus Spain. Italians Leonardo da Cutri and Paolo Boi traveled to Madrid to play Ruy Lopez and Alfonso Ceron (Italy won 3-2).

WORLD CHAMPION, 1886
William Steinitz defeated Johannes Zukertort to become the first official world chess champion.



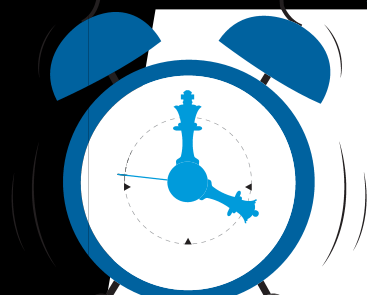
MODERN RATING SYSTEM, 1939

The first modern rating system was used by the Correspondence Chess League of America.



TECHNOLOGY

PERCEIVED COMPUTER, 1770
Thought to be a machine, the Mechanical Turk turned out to be a hoax.



CHESS CLOCK, 1861
sand hourglasses with three hours' worth of sand each

COMPUTER WIN, 1997
IBM's Deep Blue defeated GM Garry Kasparov 3½-2½.

ELECTRONIC GAME, 1844
a telegraph match played between the chess clubs of Baltimore and Washington, DC.



Premier Camp

Caveman Chess Camp June 23-28, 2019

- 25+ years of premier camps
- Trainers: GMs Yermolinsky, Goldin, Kaidanov, Shulman, Gurevich, WGM Baginskaite, FM/FT Bachler + more
- Sections by age and strength:
 - Exploration – Open to all
 - Intensive Study (IS) Youth: 1500+
 - IS Adult: 1700+ or over age 17
 - IS Fundamental Adult: Novice to Intermediate adults only
 - IS Master Class: Over 2000; SM Alex Bian already registered
- Early registration as low as \$495



National Tournament

U.S. Junior Open June 28-30, 2019

- 6SS, G/90+30, 4 sections based on 1/1/19 age: U21, U15, U11, U8
- North Central College, Wentz Science Center, Naperville, IL
- \$55 dorm single, 23 hotels < 2.5 miles; 20+ restaurants < 1 mile
- **EF:** \$60 by 12/31, \$70 by 5/31
- **Prizes:** 60 plaques; U21: \$300 plus, for eligible 1st, entry to 2020 U.S. Jr. Closed +\$200
- **REG:** Fri 6/23 11:00 -12:30
- **RNDS:** Fri 1:00 & 6:00; Sat 9:30 & 3:00; Sun 8:30 & 2:00

= One Great Chess Experience!!

Held at North Central College in beautiful Naperville, IL
Maximize opportunities & save money by combining experiences

Register by Dec 31, 2018 to enjoy earliest registration fees

The U.S. Senior Open will also be held on campus June 28-30

Caveman Summer Open held on campus June P 22

Above is partial information – for more detail and to register:

<https://www.cavemanchess.com/events>

Facebook – Caveman Chess

TLA: <http://bit.ly/2019jrsrcchess>; Check Camps at US Chess

O'Hare and Midway airports are each ½ hour from the campus; Metra rail is only blocks away. Very affordable dormitory rooms available for the tournament – with no taxes or tips for dorm rooms. A meal plan and airport shuttle service are in the works. Watch the website for updates.

BECOME A MEMBER OF US CHESS

ADULT
1 YEAR **\$49**
PREMIUM MEMBERSHIP

SCHOLASTIC
1 YEAR **\$25**
PREMIUM MEMBERSHIP

MEMBER BENEFITS

- Rated Play for the US Chess community
- Print and digital copies of *Chess Life* (or *Chess Life Kids*)
- Promotional discounts on chess books and equipment
- Helping US Chess grow the game

In addition to these two premium categories, US Chess has many other categories and multi-year memberships to suit your needs. For all of your options, see new.uschess.org/join-uschess/ or call 1-800-903-8723, option 4.

Donate to US Chess

Your Tax-Deductible Contribution
Will Help US Chess Grow the Game

US CHESS counts on donors to support initiatives that further our mission of empowering people through chess, one move at a time.

Membership dues cover the basic operating costs for US Chess.

Our goals are to grow the game by funding initiatives to improve diversity in chess, sending top players to compete in international events, and growing and retaining women chess players in the game.

With your support, we can elevate chess to be a game for life.

Every dollar counts. Make your contribution today. uschess.org/donate

RECENT NATIONAL HIGH SCHOOL CHAMPIONS

INDIVIDUAL CHAMPIONSHIP

2007 Alex Lenderman • 2008 Daniel Yeager • 2009 Robert Hess • 2010 Prashanth Amarasinghe, Alec Getz, Scott Low, Kristopher Meekins, Kevin Mo, William Ong, Christian Tanaka, Shinsaku Uesugi, Michael Vilenchuk, Eigen Wang • 2011 Eric Rosen • 2012 Ben Gershenov • 2013 Atulya Shetty • 2014 Darwin Yang • 2015 Akshat Chandra • 2016 Vignesh Panchanatham, Kesav Viswanadha, Andrew Tang, Justus D. Williams, Kyle Haining, Bryce Tiglon • 2017 Roland Feng, Kesav Viswanadha, Andrew Tang, Andrew Liu, Vignesh Panchanatham, Edward Song • 2018 **David Tianjian Peng**

2018 NATIONAL HIGH SCHOOL CHAMPION:

DAVID TIANJIAN PENG

PHOTO: ERIC ROSEN



2018 NATIONAL HIGH SCHOOL TEAM CHAMPIONS: (TOP) **THOMAS JEFFERSON HIGH SCHOOL (VA)** AND **WHITNEY YOUNG HIGH SCHOOL (IL)** PHOTOS: COURTESY OF SUBJECTS

TEAM CHAMPIONSHIP

2007 Catalina Foothills High School (AZ) • 2008 Catalina Foothills High School (AZ) • 2009 Stuyvesant High School (NY) • 2010 Hunter College Campus School (NY) • 2011 Hunter College Campus School (NY) • 2012 I.S. 318 (NY), Hunter College Campus School (NY) • 2013 Edward R. Murrow High School (NY) • 2014 Catalina Foothills (AZ) • 2015 Monta Vista High School (CA) • 2016 The Harker School (CA) • 2017 Monta Vista High School (CA) • 2018 **Thomas Jefferson High School (VA)**, **Whitney Young High School (IL)**

For a complete list of past winners, please refer to the 2018 Yearbook at uschess.org.

DONATE TO THE U.S. CHESS TRUST

SEND SETS AND BOARDS TO AT-RISK SCHOOLKIDS
ACROSS THE USA!

USCT also supports:

Denker Tournament of High School Champions
National Girls Tournament of Champions
Barber Tournament of K-8 Champions
Scholar-Chessplayer Awards
Final Four of College Chess
Chess Sets for Vets
Chess for Older Americans
World Chess Hall of Fame
Armed Forces Championship
Tournament of Senior Champions
Oral Chess History of USA Project

Rochelle Wu, 2017
National Girls Tournament of
Champions winner

Please make checks to "U.S. Chess Trust"

Mail to: PO Box 838, Wallkill, NY 12589
Or donate securely at www.uschesstrust.org
Email: al@uschesstrust.org

DONATIONS ARE TAX DEDUCTIBLE.

The Trust is a separate 501(c)(3) organization
operating independent of US Chess.



GIRLS CLUB ROOM

All female players,
along with their families and
coaches, are invited to stop
by the Girls Club Room!

Schaumburg H
Friday, 1:00 pm
Saturday, 9:30 am
Sunday, 9:00 am

Friday, March 15

2:30 P.M. - **Appearance by Jeffery**
4:00 P.M. - **Analysis and Lecture by Jennifer**

Saturday, March 16

10:00 A.M. - **Simul with Jennifer and Carolina**
3:00 P.M. - **Video livestream with WCM
Stephanie Pitcher, Utah State Representative**
3:00 P.M. - **Simul with Carolina**

Sunday, March 17

9:30 A.M. - **Town Hall Meeting**
9:30 A.M. - **Puzzles and Analysis with Carolina**

****There will boards available for casual play**

SPECIAL GUESTS:

WIM Carolina Blanco
WGM Jennifer Shahade
WCM Stephanie Pitcher
GM Jeffery Xiong

Enjoy games, prize
giveaways and snacks
while you meet and
bond with female
players and their families
from around the country.

2019 SPRING NATIONALS

2019 National Junior High (K-9) Championship

April 26 - 28
Gaylord Texan Resort and Convention Center
1501 Gaylord Trail, Grapevine, TX 76051

2019 National Elementary (K-6) Championship

May 10 - 12
Gaylord Opryland Resort and Convention Center
2800 Opryland Drive, Nashville, TN 37214

**New this year! All events will feature a Twitch
livestream with analysis of top games in progress.**

For complete information, see
www.uschess.org/content/view/10015/95
for hotel details and links to all of our national events.

FUTURE EVENTS

2019

ALL-GIRLS NATIONAL CHAMPIONSHIPS

APRIL 12-14, 2019

Hyatt Regency McCormick Place
Chicago, IL 60616
888-421-1442
312-567-1234
\$165 Single/Double/Triple/Quad

NATIONAL JUNIOR HIGH

APRIL 26-28, 2019

Gaylord Texan
1501 Gaylord Trail
Grapevine, TX 76051
817-778-1000
\$155 Single/Double/Triple/Quad

NATIONAL ELEMENTARY

MAY 10-12, 2019

Gaylord Opryland
2800 Opryland Dr.
Nashville, TN 37214
615-889-1000
888-777-6779
\$171 Single/Double/Triple/Quad

NATIONAL OPEN

JUNE 12-16, 2019

Westgate Las Vegas Resort & Casino
3000 Paradise Road
Las Vegas, NV 89109
800-732-7117
\$69, except \$95 Friday & Saturday

U.S. JUNIOR OPEN CHAMPIONSHIP

JUNE 28-30, 2019

North Central College
Wentz Science Center-Ratio Hall
125 S. Loomis St.
Naperville, IL 60540
\$55 single, \$100 double, \$145 triple
by 5/31, \$10 more per person
thereafter

U.S. OPEN

AUGUST 3-11, 2019

Rosen Centre
9840 International Dr.
Orlando, FL 32819
407-996-9840
800-204-7234
\$129 Single/Double/Triple/Quad

NATIONAL K-12 GRADE

DECEMBER 13-15, 2019

Disney's Coronado Springs
1000 West Buena Vista Dr.
Lake Buena Vista, FL 32830
407-939-4686
\$135 Single/Double/Triple/Quad

2020

NATIONAL HIGH SCHOOL

APRIL 3-5, 2020

Greater Columbus Convention Ctr.
400 N. High St.
Columbus Hyatt Regency
405 N. High St.
Columbus, OH 43215
\$155 Single/\$165 Double

NATIONAL JUNIOR HIGH

APRIL 24-26, 2020

Hyatt Regency Jacksonville
Riverfront
225 East Coastline Dr.
Jacksonville, FL 32202
888-421-1442
\$145

NATIONAL ELEMENTARY

MAY 8-10, 2020

Gaylord Opryland
2800 Opryland Dr.
Nashville, TN 37214
615-889-1000
888-777-6779
\$176 Single/Double/Triple/Quad

U.S. OPEN

AUGUST 8-16, 2020

Embassy Suites by Hilton
Two Convention Center Plaza
Saint Charles, MO 63303
636-946-5544
\$147

NATIONAL K-12 GRADE

DECEMBER 11-13, 2020

Rosen Shingle Creek
9939 Universal Boulevard
Orlando, FL 32819
407-996-3154
866-996-9939
\$135 Single/Double/Triple/Quad

2021

SUPERNATIONALS VII

MAY 7-9, 2021

Gaylord Opryland
2800 Opryland Dr.
Nashville, TN 37214
615-889-1000
888-777-6779

NATIONAL K-12 GRADE

DECEMBER 3-5, 2021

Rosen Shingle Creek
9939 Universal Boulevard
Orlando, FL 32819
407-996-3154
866-996-9939
\$129

For more information about US Chess national championships, please visit our website at uschess.org and click on "PLAY" then "National Events."



TROPHIES PLUS

115 MAIN STREET BRED A, IOWA 51436

800-397-9993 | WWW.TROPHIESPLUS.COM | TROPHYMAN@TROPHIESPLUS.COM

PROUD SUPPLIER OF THE NATIONAL SCHOLASTIC TOURNAMENT AWARDS FOR US CHESS SINCE 1999

PROUD SPONSOR OF THE 2007 - 2019 ALL-AMERICA TEAMS FOR US CHESS

Recognizing Excellence
SINCE 1984