



US CHESS
FEDERATION

2018
NATIONAL K-12 GRADE
CHAMPIONSHIPS
ORLANDO FLORIDA
WHERE DREAMS COME TRUE
US CHESS
FEDERATION

DECEMBER 14-16, 2018

ROSEN SHINGLE CREEK

Visit Our Chess Shop in the
Conway Room at the
National K-12 Grade Championships

Friday 11:00am - 9:00pm
Saturday 8:00am - 9:00pm
Sunday 8:00am - 6:00pm

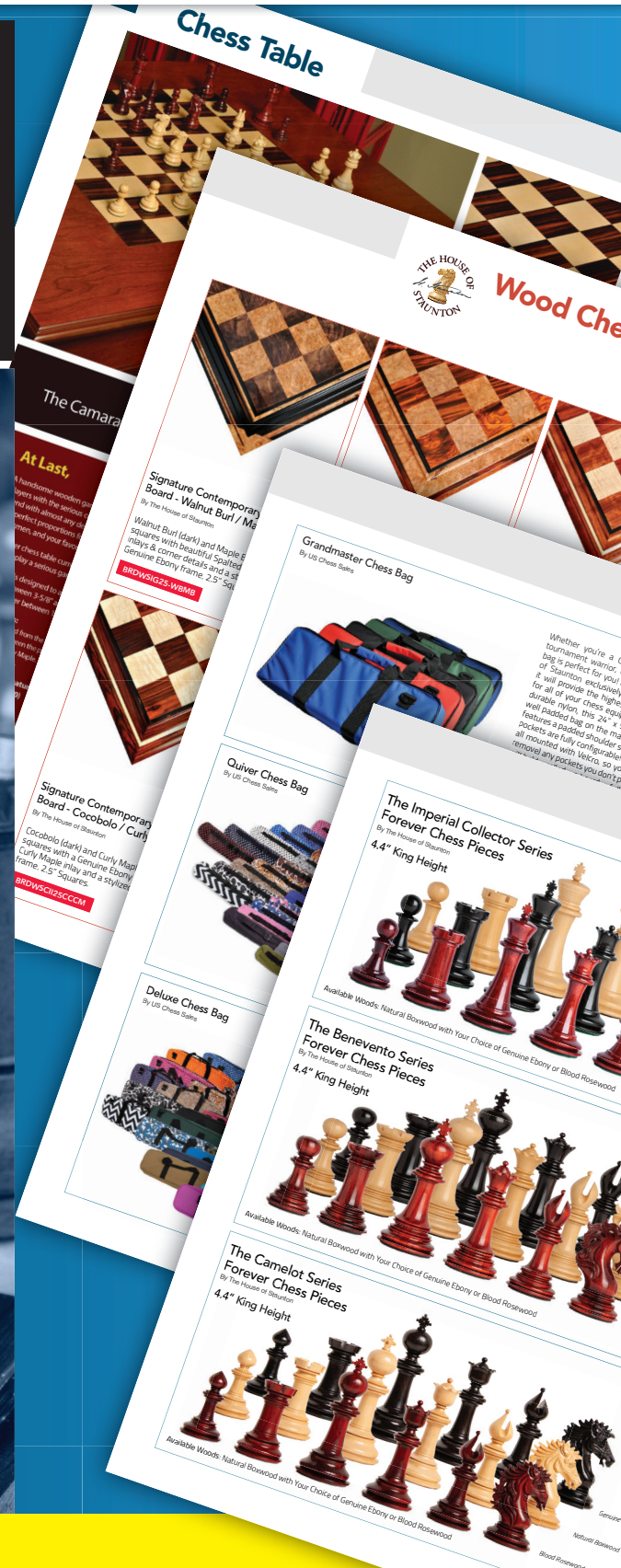
The Genuine Staunton™ Original 1849 Series Vintage Chess Pieces - 4.4" King - Now Available

2019 Annual Buying Guide
US CHESS
FEDERATION SALES

SAVE 20%
Use Coupon Code:
K12

Expires 12/31/18. Discounts can not be
combined. Excludes clearance, shopworn,
imperfect, or otherwise marked.

888.51.CHESS (888.512.4377) • USCFSALES.COM
All Orders Placed By 2:00PM (Central) Ship the Same Business Day!



Get Your Free Copy in the Chess Shop Today!

TABLE *of* CONTENTS

- 04** Welcome Letters from Director of Events Boyd M. Reed and Executive Director Carol B. Meyer
- 06** Tournament Staff
- 06** Scholastic Council Representative Elliott Neff
- 07** Guest Grandmaster Varuzhan Akobian
- 08** Tournament Schedule
- 09** Educational Seminars with Ryan Velez
- 11** Official Scoresheets
- 18** Tournament Rules
- 20** Electronic Recording Devices Rules
- 24** 2019 All-America Team
- 25** Chess Adventures with GM Alex Ipatov
- 26** Recent National K-12 Grade Champions
- 27** Future Events

SHARE YOUR STORIES AND PHOTOS ON SOCIAL MEDIA USING #K12ChessChamps.

Donate to US Chess

Your Tax-Deductible Contribution Will Help US Chess Grow the Game

US CHESS counts on donors to support initiatives that further our mission of empowering people through chess, one move at a time.

Membership dues cover the basic operating costs for US Chess.

Our goals are to grow the game by funding initiatives to improve diversity in chess, sending top players to compete in international events, and growing and retaining women chess players in the game.

With your support, we can elevate chess to be a game for life.

Every dollar counts. Make your contribution today. uschess.org/donate

WELCOME TO ORLANDO AND THE 2018 NATIONAL K-12 GRADE CHAMPIONSHIPS!

Welcome to Orlando and the 2018 National K-12 Grades Championships. It's my privilege to be part of the team that will make this a quality experience for all players, parents, coaches, and spectators.

We're proud to be partnering again with Rosen Shingle Creek. This amazing facility has hosted several US Chess national events, and we know you will enjoy the outstanding hospitality and service that are Rosen Hotels hallmarks.

We've assembled a first-rate team of directors, led by NTD Francisco Guadalupe (chief tournament director), NTD Brian Yang (floor chief) and NTD William Buklis (backroom chief). They will ensure that the tournament is conducted with full observance of all US Chess rules. NTD Korey Kormick and his staff at Chess Control will be happy to assist with any questions you have.

GM Varuzhan Akobian, two-time World Open champion and holder of multiple Olympiad medals, is our guest grandmaster. "Var" will be conducting a simultaneous exhibition, a lecture, and two "take-on-all-comers" blitz session. He will also appear as a guest analyst on our live stream.

"Wait ... a live stream?" Yes, you read that correctly. We will be broadcasting live analysis of the top boards in Grades 2 through 12 on the US Chess Twitch feed. Our analysts are NM William Aramil (2003 Denker Tournament of Champions winner) and FM Jennifer Yu (2014 World U-12 gold medalist). This live analysis will occur in rounds five through seven. Please check the schedule of events in this program for the exact time and location. We welcome you to stop in, watch the analysis, and interact with the analysts. Of course, you can also watch the stream on Twitch at <http://www.twitch.tv/uschess>. When you see Pete Karagianis, Assistant Director of Events, moving around the site, send all compliments and congratulations his way, as he is the driving force behind this new feature.

US Chess wants you to have fun and really enjoy yourselves at this event. Of course, we also want you to do so **safely**. Be aware of your surroundings, and keep in mind that you're sharing space with several thousand people this weekend. Remember, safety is no accident.

We are also offering three lectures this weekend by NM Ryan Velez, a member-at-large of the US Chess Executive Board. These lectures are free and highly informational. We encourage you to attend at least one of them. Please check the schedule of events in this program for the subjects, times, and location.

Under the strategic direction of our Executive Director, Carol Meyer, we are constantly looking for ways to improve our national events. I welcome any ideas or comments you have in that regard.

Please accept my best wishes for an enjoyable and successful tournament.

Sincerely,



Boyd M. Reed
Director of Events

NEED TO MISS A ROUND?

If you need to miss a round, please report your absence at least one hour prior to the start of a round. If we don't know and you don't show, you will be dropped from the tournament! Even if late, let us know. It's not any fun getting paired and not having an opponent!

A maximum of one half-point bye is available in the first six rounds if requested by the start of the first round. Zero-point byes shall be available for all rounds and must be requested at least two hours before the start of the round they are requested for.

INFORMATION



RESULTS





CAROL B. MEYER
US CHESS EXECUTIVE DIRECTOR

Welcome to the 2018 National K-12 Grade Championships! Last year, this was the first national scholastic event I attended for US Chess and it ranks among my favorites. For me, nothing compares to seeing our youngest players' awestruck faces as they enter the playing hall or to watching our more seasoned players revel in the friendships they have made through chess.

This event is special. For US Chess, it kicks off another scholastic year. We have said goodbye to our graduating players and we are welcoming new players to their first national event. Everyone here hopes to play strong chess, and each of you has studied and practiced hard in order to be prepared. Your dedication and commitment to chess is amazing.

Our team at US Chess knows that coming to these events requires sacrifices of time and other resources. For the players, take a moment to thank your coaches and families for allowing you this opportunity to compete nationally. For coaches and parents, thank you for allowing your player to do what they love and for your support of your student's competitive spirit. Chess is a game that they will have with them for a lifetime and your gift to them is an important investment in their future. We are grateful for their place in our special community.

Events like this don't just happen. Boyd Reed, who is our US Chess Director of Events, and his team work tirelessly on every detail for this and all of our national tournaments. They select venues that can accommodate our unique needs while offering an inviting getaway for players and their families. If you see Boyd or any

one of his team this weekend, please thank them for a job well done. They love the game of chess as much as you do and want every US Chess event to be a great experience for all involved.

On behalf of US Chess, I urge you to make the most of your time here by taking in everything that this event has to offer. Enjoy meeting new people and making new friends, visit the many wonderful places that Orlando is justifiably world famous for, but most of all, good luck with your games! I am rooting for each of you to do your best and of course, to have fun while doing it.

Sincerely,

A handwritten signature in black ink that reads "Carol B. Meyer".

Carol B. Meyer
US Chess Executive Director

SAFETY FIRST!

Your well being is a top priority for US Chess. Below we have listed some items that may be of help to the players, parents, coaches, or groups who are participating in the 2018 National K-12 Grade Championships.

BEFORE YOU ARRIVE:

Medical and contact information.

If you are with a group, it's recommended that each participant fill out a medical form listing their parents, coach, or another adult who can allow medical treatment if necessary. All participants should have contact information on them in case of an emergency. Those who are with a group should have contact information for both their parents and the person appointed as chaperone.

BEFORE THE TOURNAMENT:

Tour the property.

After your arrival it's a good idea to tour the property so everyone becomes familiar with the property's layout. Look for your main playing hall, Skittles area, and Chess Control.

PICK YOUR SPOT:

Know where to meet.

Determine where players should meet their groups or adult chaperone(s) after their games are finished. Remember, anyone who is lost should go immediately to Chess Control.

DURING THE TOURNAMENT:

Please monitor behavior.

Hotels as well as tournaments have safety rules that everyone must follow. Running in the halls, climbing on furniture or art work, playing outdoor games inside, such as throwing balls, is usually frowned upon and can result in injury or costly damages.

US Chess wants everyone to have a wonderful experience. You can help keep it positive by following the above recommendations. For more safety tips, see our video on YouTube (search for "Tournament Safety Tips from US Chess").

TOURNAMENT STAFF

EXECUTIVE DIRECTOR: **Carol B. Meyer**

ORGANIZER: **Boyd M. Reed**

ASSISTANT DIRECTOR OF EVENTS:

Pete Karagianis

CHIEF TOURNAMENT DIRECTOR:

NTD Francisco Guadalupe

FLOOR CHIEF: **Brian Yang**

BACKROOM CHIEF: **William Buklis**

GUEST GRANDMASTER: **Varuzhan Akobian**

SCHOLASTIC COUNCIL REPRESENTATIVE:

Elliott Neff

SECTION CHIEFS:

Rudolph Abate

Glenn Panner

Jon Haskel

Ervin Sedlock

Kevin Hyde

Jeffrey Smith

TD FLOOR STAFF:

Anjelina Belakovskaia

Maya McGreen

Larry Bell

William Nash

Noreen Davisson

Mark Nicholas

Todd Guthrie

Amy Nunn

Charles Hatherill

Usha Raghavan

Joshua Lawson

Andrew Rea

Harvey Lerman

Michael Schulte

Caijun Luo

Samuel Shoykhet

Maggie Luo

Hal Sprechman

Mariah McGreen

PAIRING CHIEFS:

Brian Dickerson

John Simons

Susan Justice

Joseph Yun

CHESS CONTROL MANAGER: **Korey Kormick**

CHESS CONTROL STAFF:

Bonnie Guadalupe

Susan Kantor

Michelle Martinez

DGT OPERATOR: **Frank Johnson**

SCORE KEEPER: **Amanda Kleidermacher**

ANALYSTS:

William Aramil

Jennifer Yu

PROGRAM BOOK STAFF:

Senior Director of Strategic Communication,

Daniel Lucas

Publications Editor, **Melinda Matthews**

Art Director, **Frankie Butler**

Creative Content Coordinator, **Natasha Roberts**

Editorial Assistant, Copy Editor, **Alan Kantor**

THIS TOURNAMENT IS HOSTED BY



ELLIOTT NEFF

Scholastic Council Representative

Hello, my name is Elliott Neff and I'm the Scholastic Council representative for this event.

Like many of you, I began playing chess as a child. My fascination with the game led to many hours of self-study, resulting in earning the national master title while still a teenager as well as the privilege of representing the state of Washington twice in the Denker Tournament of High School Champions.



As much as I enjoyed chess, I longed to be a part of something bigger that was making a positive difference in the lives of children. My "lightbulb moment" came through the testimonials of parents who shared with me how their children were not only improving in chess, but also improving their grades in school, developing the ability to focus, to handle perseverance in a positive manner—essentially developing grit and emotional intelligence along with critical thinking skills that helps them succeed in life.

I became a full-time chess coach in 2002, and launched Chess4Life in 2005, an organization that exists to teach kids life skills through the game of chess. I am active in the scholastic chess community in the state of Washington and serve on the US Chess Scholastic Council in order to serve the national scholastic community. I am also a US Chess Professional Coach Level V.

Please do say "hi" if we get a chance to meet, as I expect to be covering much ground at the event. Come to the scholastic meeting on Saturday if you can spare the time. I look forward to hearing from you about what is going well, what we can improve on, and how together we can build an even brighter future for the youth involved in US Chess!

Each of you has a story about the impact that chess has made in your life. Keep sharing that story. My hope is that each child, parent, and coach participating in this event will stay focused on this goal of progress, not perfection, and build a future that is indeed "Better Together."

Win, Draw, Learn!

Elliott Neff

Author - *A Pawn's Journey: Transforming Lives One Move at a Time*

SCHOLASTIC COUNCIL MEETING

Parents, coaches, and all scholastic chess enthusiasts are invited to attend the Scholastic Council meeting held at each US Chess scholastic event.

SATURDAY, DECEMBER 15, 2:15 P.M. - 3:15 P.M.
GATLIN E2/E3

WELCOME GRANDMASTER VARUZHAN AKOBIAN



GM Varuzhan (Var) Akobian is a popular Armenian-American player and teacher who emigrated to the U.S. in 2001. In 2002, Var was awarded the prestigious Samford Chess Fellowship; two years later, he clinched his grandmaster title. In addition to his many strong individual tournament victories, Var has represented the U.S. in multiple international competitions and was featured on MTV's "True Life" series. He regularly serves in the GM-In-Residence rotation at the Saint Louis Chess Club.

LECTURE

SATURDAY, DECEMBER 15

11:30 A.M. - 12:30 P.M. | GATLIN E2/E3

SIMULTANEOUS EXHIBITION

FRIDAY, DECEMBER 14

9:00 A.M. - 11:00 A.M. | PANZACOLA

"ALL COMERS" BLITZ

FRIDAY, DECEMBER 14

2:30 P.M. - 4:30 P.M. | PANZACOLA

"ALL COMERS" BLITZ

SATURDAY, DECEMBER 15

2:30 P.M. - 4:30 P.M. | PANZACOLA

"ALL COMERS" BLITZ

SUNDAY, DECEMBER 16

2:00 P.M. - 4:00 P.M. | PANZACOLA

TAKE OUR **NATIONAL EVENT SURVEY!**

US Chess appreciates your membership, sponsorship and attendance at our national events! Please help us improve the service we provide at our national championships by completing the tournament survey by December 30, 2018. Please go to:

<https://www.surveymonkey.com/r/2018K-12Grade>

THURSDAY DECEMBER 13

9:00 a.m. - 9:00 p.m.	Chess Control	Gatlin Registration Desk 1
11:00 a.m. - 2:00 p.m.	Bughouse Tournament	Gatlin B/C/D
5:00 p.m. - 9:00 p.m.	Blitz Tournament K-12 & K-6	Gatlin B/C/D
	Bookstore	Conway
	Skittles Room, T-Shirts, Other Vendors, DGT Projection (Thursday-Sunday)	Panzacola
	Girls Club	Gatlin E4

FRIDAY DECEMBER 14

8:00 a.m. - 8:00 p.m.	Chess Control	Gatlin Registration Desk 1
11:00 a.m. - 9:00 p.m.	Bookstore	Conway
9:00 a.m. - 11:00 a.m.	Simultaneous Exhibition with GM Varuzhan Akobian	Panzacola
9:30 a.m. - 10:30 a.m.	My First Tournament Seminar with Ryan Velez	Gatlin E2/E3
12:45 p.m. - 1:00 p.m.	Opening Ceremony	Gatlin B/C/D
1:00 p.m. - 4:10 p.m.	Round One: Grades 2-12	Gatlin B/C/D
1:30 p.m. - 4:40 p.m.	Round One: Grades K-1	Gatlin A1/A2
2:30 p.m. - 4:30 p.m.	"All Comers" Blitz with GM Varuzhan Akobian	Panzacola
5:30 p.m. - 8:40 p.m.	Round Two: Grades K-1	Gatlin A1/A2
6:00 p.m. - 9:10 p.m.	Round Two: Grades 2-12	Gatlin B/C/D

SATURDAY DECEMBER 15

8:00 a.m. - 8:00 p.m.	Chess Control	Gatlin Registration Desk 1
8:00 a.m. - 9:00 p.m.	Bookstore	Conway
8:50 a.m. - 9:00 a.m.	Presentation of Top Five K-12 Blitz Individual Winners	Gatlin B/C/D
8:50 a.m. - 9:00 a.m.	Presentation of Top Five K-6 Blitz Individual Winners	Gatlin B/C/D
9:30 a.m. - 12:40 p.m.	Round Three: Grades K-1	Gatlin A1/A2
10:00 a.m. - 1:10 p.m.	Round Three: Grades 2-12	Gatlin B/C/D
10:00 a.m. - 11:00 a.m.	The Benefit of Chess as an Educational Tool Seminar with Ryan Velez	Gatlin E2/E3
10:30 a.m. - 11:40 a.m.	Round One: Friends and Family	Gatlin E1
11:30 a.m. - 12:30 p.m.	Lecture by GM Varuzhan Akobian	Gatlin E2/E3
12:30 p.m. - 1:40 p.m.	Round Two: Friends and Family	Gatlin E1
1:30 p.m. - 4:40 p.m.	Round Four: Grades K-1	Gatlin A1/A2
1:50 p.m. - 2:00 p.m.	Presentation of Top Five Bughouse Winners	Gatlin B/C/D
2:00 p.m. - 5:10 p.m.	Round Four: Grades 2-12	Gatlin B/C/D
2:15 p.m. - 3:15 p.m.	Scholastic Meeting	Gatlin E2/E3
2:30 p.m. - 4:30 p.m.	"All Comers" Blitz with GM Varuzhan Akobian	Panzacola
2:30 p.m. - 3:40 p.m.	Round Three: Friends and Family	Gatlin E1
4:30 p.m. - 5:40 p.m.	Round Four: Friends and Family	Gatlin E1

5:30 p.m. - 8:40 p.m.	Round Five: Grades K-1	Gatlin A1/A2
5:50 p.m. - 6:00 p.m.	Presentation of Top Five K-12 Blitz Team Winners	Gatlin B/C/D
5:50 p.m. - 6:00 p.m.	Presentation of Top Five K-6 Blitz Team Winners	Gatlin B/C/D
6:00 p.m. - 9:10 p.m.	Round Five: Grades 2-12	Gatlin B/C/D
6:00 p.m. - 9:00 p.m.	Round Five: Live stream of top boards, Grades 2-12	Gatlin E4

SUNDAY DECEMBER 16

8:00 a.m. - 2:30 p.m.	Chess Control	Gatlin Registration Desk 1
8:00 a.m. - 6:00 p.m.	Bookstore	Conway
8:50 a.m. - 9:00 a.m.	Presentation of Trophies Plus All-America Team	Gatlin B/C/D
9:00 a.m. - 12:10 p.m.	Round Six: Grades 2-12	Gatlin B/C/D
9:00 a.m. - 12:00 p.m.	Round Six: Live stream of top boards, Grades 2-12	Gatlin E4
9:30 a.m. - 12:40 p.m.	Round Six: Grades K-1	Gatlin A1/A2
10:00 a.m. - 11:00 a.m.	Preparing for International Youth Events Seminar with Ryan Velez	Gatlin E2/E3
1:00 p.m. - 4:10 p.m.	Round Seven: Grades 2-12	Gatlin B/C/D
1:00 p.m. - 4:00 p.m.	Round Seven: Live stream of top boards, Grades 2-12	Gatlin E5
1:30 p.m. - 4:40 p.m.	Round Seven: Grades K-1	Gatlin A1/A2
2:00 p.m. - 4:00 p.m.	"All Comers" Blitz with GM Varuzhan Akobian	Panzacola
Approximately 4:30 p.m.	Awards Ceremony: Grades K-1	Gatlin A3/A4
Approximately 5:00 p.m.	Awards Ceremony: Grades 2-12	Gatlin B/C/D

End times are approximate

EDUCATIONAL SEMINARS WITH RYAN VELEZ

MY FIRST TOURNAMENT

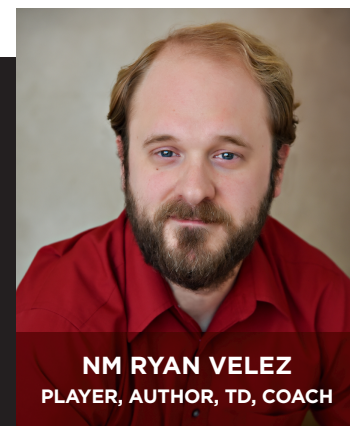
FRIDAY, DECEMBER 14, 9:30 A.M. - 10:30 A.M. | GATLIN E2/E3

THE BENEFIT OF CHESS AS AN EDUCATIONAL TOOL

SATURDAY, DECEMBER 15, 10:00 A.M. - 11:00 A.M. | GATLIN E2/E3

PREPARING FOR INTERNATIONAL YOUTH EVENTS

SUNDAY, DECEMBER 16, 10:00 A.M. - 11:00 A.M. | GATLIN E2/E3



GIRLS CLUB ROOM

All female players, along with their families and coaches, are invited to stop by the Girls Club Room!

Gatlin E4; Opens:
Friday, 1:00 pm
Saturday, 9:30 am
Sunday, 9:00 am

Friday, December 14, 3:00 pm
Simul with Sabina and Elshan

Saturday, December 15, 10:15 am
Lecture for chess parents

Saturday, December 15, 3:30 pm
Lecture by Sabina and Carolina, followed by a simul

Sunday, December 16, 11:00 am
Town Hall with panel

****Free lessons for beginners & novices at the start of each round**

ENJOY games, prize giveaways, snacks, and a *Queen of Katwe* screening. Our special guests will be available for game analysis, puzzles, simuls, and other chess-related activities.

Many thanks to the Florida Chess Association for their assistance.

SPECIAL GUESTS:

IM Carolina Blanco
WGM Sabina Foisor
GM Elshan Moradiabadi

Come meet and bond with female players and their families from around the country.

BOOKSTORE

brought to you by USCF Sales

Friday: 11:00 AM - 9:00 PM
Saturday: 8:00 AM - 9:00 PM
Sunday: 8:00 AM - 6:00 PM

IN CONWAY

FRIENDS & FAMILY TOURNAMENT

4SS, G/30. \$20 ONSITE REGISTRATION ONLY. RATED AND UNRATED SECTIONS. TROPHIES FOR EACH CATEGORY OF COMBINED PLAYER/STUDENT RESULTS.

**SATURDAY, DECEMBER 15
GATLIN E1**

10:30 A.M., 12:30 P.M., 2:30 P.M., 4:30 P.M.

TAKE YOUR GAME TO THE NEXT LEVEL

#1	Unrated-300
#2	300-600
#3	600-900
#4	900-1200
#5	1200-1500
#6	1400-1700
#7	1700-1900+

EACH LEVEL

▶ **1 LESSON BOOK 10 LESSONS**
COVERING THE 5 DISCIPLINES OF CHESS: CHECKMATE, DEFENSE, ENDGAME, STRATEGY & TACTICS

▶ **1 PRACTICE PUZZLE PACK**
OVER 150 PRACTICE PUZZLES
INCLUDING CHALLENGE PUZZLES TO CHECK YOUR PROGRESS



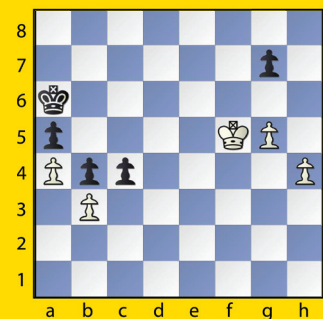
My students love your books! They even ask to work on them during breaks at school!

- Molly Coy, Teacher/Coach, Tucson, AZ



www.CoachJaysChessAcademy.com

Check out our books in the bookstore



Solve this puzzle for 10% OFF

Coach Jay's books at the bookstore!
White to play and win!

offer valid at event only.
One discount purchase per customer.

WHITE: _____

BLACK: _____

BOARD: _____ DATE: _____

SECTION: _____

WHITE	BLACK	WHITE	BLACK	WHITE	BLACK
1		23		45	
2		24		46	
3		25		47	
4		26		48	
5		27		49	
6		28		50	
7		29		51	
8		30		52	
9		31		53	
10		32		54	
11		33		55	
12		34		56	
13		35		57	
14		36		58	
15		37		59	
16		38		60	
17		39		61	
18		40		62	
19		41		63	
20		42		64	
21		43		65	
22		44		66	

WHITE WINS BLACK WINS DRAW

WHITE: _____

BLACK: _____

BOARD: _____ DATE: _____

SECTION: _____

WHITE	BLACK	WHITE	BLACK	WHITE	BLACK
1		23		45	
2		24		46	
3		25		47	
4		26		48	
5		27		49	
6		28		50	
7		29		51	
8		30		52	
9		31		53	
10		32		54	
11		33		55	
12		34		56	
13		35		57	
14		36		58	
15		37		59	
16		38		60	
17		39		61	
18		40		62	
19		41		63	
20		42		64	
21		43		65	
22		44		66	

WHITE WINS BLACK WINS DRAW

WHITE: _____

BLACK: _____

BOARD: _____ DATE: _____

SECTION: _____

WHITE	BLACK	WHITE	BLACK	WHITE	BLACK
1		23		45	
2		24		46	
3		25		47	
4		26		48	
5		27		49	
6		28		50	
7		29		51	
8		30		52	
9		31		53	
10		32		54	
11		33		55	
12		34		56	
13		35		57	
14		36		58	
15		37		59	
16		38		60	
17		39		61	
18		40		62	
19		41		63	
20		42		64	
21		43		65	
22		44		66	

WHITE WINS BLACK WINS DRAW

WHITE: _____

BLACK: _____

BOARD: _____ DATE: _____

SECTION: _____

WHITE	BLACK	WHITE	BLACK	WHITE	BLACK
1		23		45	
2		24		46	
3		25		47	
4		26		48	
5		27		49	
6		28		50	
7		29		51	
8		30		52	
9		31		53	
10		32		54	
11		33		55	
12		34		56	
13		35		57	
14		36		58	
15		37		59	
16		38		60	
17		39		61	
18		40		62	
19		41		63	
20		42		64	
21		43		65	
22		44		66	

WHITE WINS BLACK WINS DRAW

WHITE: _____

BLACK: _____

BOARD: _____ DATE: _____

SECTION: _____

WHITE	BLACK	WHITE	BLACK	WHITE	BLACK
1		23		45	
2		24		46	
3		25		47	
4		26		48	
5		27		49	
6		28		50	
7		29		51	
8		30		52	
9		31		53	
10		32		54	
11		33		55	
12		34		56	
13		35		57	
14		36		58	
15		37		59	
16		38		60	
17		39		61	
18		40		62	
19		41		63	
20		42		64	
21		43		65	
22		44		66	

WHITE WINS BLACK WINS DRAW

WHITE: _____

BLACK: _____

BOARD: _____ DATE: _____

SECTION: _____

WHITE	BLACK	WHITE	BLACK	WHITE	BLACK
1		23		45	
2		24		46	
3		25		47	
4		26		48	
5		27		49	
6		28		50	
7		29		51	
8		30		52	
9		31		53	
10		32		54	
11		33		55	
12		34		56	
13		35		57	
14		36		58	
15		37		59	
16		38		60	
17		39		61	
18		40		62	
19		41		63	
20		42		64	
21		43		65	
22		44		66	

WHITE WINS BLACK WINS DRAW

WHITE: _____

BLACK: _____

BOARD: _____ DATE: _____

SECTION: _____

WHITE	BLACK	WHITE	BLACK	WHITE	BLACK
1		23		45	
2		24		46	
3		25		47	
4		26		48	
5		27		49	
6		28		50	
7		29		51	
8		30		52	
9		31		53	
10		32		54	
11		33		55	
12		34		56	
13		35		57	
14		36		58	
15		37		59	
16		38		60	
17		39		61	
18		40		62	
19		41		63	
20		42		64	
21		43		65	
22		44		66	

WHITE WINS BLACK WINS DRAW

TOURNAMENT RULES

2018 NATIONAL K-12 GRADE CHAMPIONSHIPS

Note: Posted procedures at the site supersede these published procedures.

The 2018 National Scholastic K-12 Grade Chess Championships are sanctioned by the United States Chess Federation and conducted by its rules. The 6th Edition of the U.S. Chess Federation's Official Rules of Chess, as amended, and the US Chess National Scholastic Chess Tournament Regulations are the basis for all the rules and regulations. We include the following rules here to answer players, parents and coaches most frequently-asked questions, to highlight changes that are different than the rule book, and to remind players of useful information.

TOURNAMENT DIRECTORS (TDs)

TDs will be on the tournament floor at all times to assist players in the event of any problem or question. To summon a director, raise your hand and keep it in the air until a TD comes to assist you. Remember that a TD will generally not interfere with your game. **It is up to you to make a claim.** If you think a TD has ruled incorrectly concerning your game, you should ask for another TD and make an appeal immediately.

CLOCKS AND TIME CONTROLS

The time control is game-in-90 minutes with 5-second delay (G/90, d5). Digital clocks with delay capability must have the 5-second delay set. Analog clocks should be set at 4:30. The game must be either won or drawn before the flag falls at 6:00. The player whose flag falls first loses the game unless the opponent has insufficient mating material or both flags have fallen. In either of those exceptions, the game is drawn. **The TD will tell you which way to face your clock.** A digital clock with time delay set is preferable to any other clock. Therefore, if White has such a clock available and Black does not, White's clock should be used. If a time delay clock is used, it must be set with the time delay in force from move one. When using the time delay feature, set the clocks at 90 minutes, or 1 hour and 30 minutes with a five-second "delay," or "Bronstein."

START OF THE GAME

White's clock must be started as soon as the TD announces that the round has begun. Black's clock may not be started before White has made a move. If a clock is not available at the start of a round, any elapsed time before one becomes available will be evenly split between players. If both players are late for the start of a round, the first to arrive must split the elapsed time before starting the clock.

RECORDING MOVES

Except for the Kindergarten, 1st, 2nd and 3rd grade sections, each player is required to record the moves, move after move. Neither player is required to keep score if either player has less than five minutes at the end of the game.

ELECTRONIC RECORDING DEVICES (ERD)

Only the MonRoi, eNotate, PlyCounter and Chess NoteR are authorized for use at this event. Other privately or commercially available programs or devices are forbidden. Those players using an approved ERD must, at all times, play the intended move on the board first, before recording it on the device. **Further, the ERD must be kept on the table throughout the game; players may not take an ERD outside the tournament hall while a game is in progress. Also, no electronic devices may be taken to the restrooms.** Failure to follow these procedures may result in penalties, if observed by a TD, even without a claim from the opponent.

TOUCH-MOVE

If you intentionally touch a piece when it is your turn, that piece must be moved if you can do so legally. If you intentionally touch an opponent's piece when it is your turn to move, the opponent's piece must be captured if you can do so legally. You must clearly say, "I adjust" before touching a piece if you want to adjust that piece on the board. You may do so only when it is your turn. If you accidentally release a piece on an unintended but legal square, you must leave it on that square. You may not touch any pieces on the board when it is not your turn.

ILLEGAL MOVES

If a player discovers that one of his/her or the opponent's last 10 moves was illegal, the player should summon a tournament director immediately. The TD can reinstate the position to what it was before the illegal move, and the game shall continue by applying the touch-move rule to the move replacing the illegal move. Clocks will not be reset. If neither player has used one hour, there will be no time penalty assessed for an illegal move. If either player has used one hour, then any illegal move will result in two minutes being added to the opponent of the player making the illegal move. A player must raise his/her hand and claim an illegal move. The TD will not do so; neither may parents, coaches, nor other spectators.

CHECK

Announcing check is not necessary. It is the responsibility of the opponent to notice the check.

A player who does not notice the check may suffer serious consequences (see the touch-move rule).

TIME FORFEITS

Only the players involved in a game may claim a Time Forfeit in that game. No parent, coach, spectator, other players or TD may make such a claim or bring the fall of a flag to the attention of the players. A player may claim a Time Forfeit only if he/she stops the clocks before the claimant's own time runs out. If both flags are down, the game is a draw.

LATE ARRIVALS

A player who is more than one hour late for a scheduled round loses the game by forfeit and will not be paired for the next round unless reinstated by the Chief TD. The hour is measured from when the round was started. Request for reinstatement, if desired, must be made by the player, coach or parent, to the Chief Tournament Director or Floor Chief.

DRAWS

If you want to offer a draw to your opponent, you should do so after you make a move but before you start your opponent's clock. Your opponent may decline the draw by saying so or by moving a piece. A draw offer is valid, and may not be retracted, until it is accepted or declined by your opponent. If both players agree to a draw, then the game is over regardless of previous checkmate, stalemate or illegal positions. A reasonably complete and accurate scoresheet is required to claim a draw by triple occurrence of position or under the 50-move rule. If such a claim is found to be incorrect, two minutes will be added to the opponent's remaining time.

CLAIMS OF INSUFFICIENT LOSING CHANCES

No claim of insufficient losing chances can be made if time delay is already in force on the clock being used. However, if the game clock cannot be set in delay mode, a player on the move who has no more than two minutes left may stop the clock and ask the TD to declare the game a draw on the grounds that the player has insufficient losing chances. Such a claim is also a draw offer. The TD may, at his discretion, place a digital clock, set with time-delay at five seconds, on the game. If this is done, the

claimant gets half of his remaining time up to but not exceeding one minute, while the opponent's time is not adjusted and the game continues until a result is achieved. If the claim is obviously correct, the TD should grant the draw. If the claim is obviously incorrect, the TD may deduct up to one minute from the claimant's time and the game should continue. If the claim is unclear, but no time-delay clock is available to insert on the game, the TD may reserve a decision while he watches the continuation of the game or may ask the players to re-claim after restarting the game.

ANALYSIS OF GAMES

Players may not analyze their games in the tournament room. Analysis should be conducted in the skittles area or elsewhere.

REPORTING RESULTS

Immediately upon completion of the game, the players should carefully complete and sign the results sheet at their board, without disturbing the position, and hold the results sheet up in the air until a TD comes to get it. **Players should not sign the results sheet until the correct result has been recorded! Both players must remain at their board until a TD takes the results sheet.** Only after the TD has done so should both players set up the pieces and leave the playing area.

PAIRINGS

The WinTD pairing program will be used for this tournament. Players will generally be paired with other players who have the same score each round. Players should not be assigned the same color three times in a row unless there is no other way to pair the score group or unless necessary to equalize colors. Every reasonable effort will be made to avoid pairing players from the same school together. One exception is the last round when more than half of the players in the top group are from the same school. In this case, some might be paired together. You can find other situations in Paragraph 18.1 of the Scholastic Regulations. If you believe there is a pairing error, report it to a TD immediately! Once the round starts, it will probably be too late to make any changes. Parents and coaches should check the correctness of the wallcharts every round. Errors in scores reported after two or more rounds would most likely not be corrected.

CONDUCT OF PLAYERS

Please try to keep as quiet as possible on the tournament floor so that you do not disturb other players. **You may not speak to anyone while your game is in progress unless you have asked a TD to be present.** If there is a problem of any kind during your game, call a TD immediately. If you wait until after your game is over, the result probably cannot be changed even if your claim was correct. Be careful what you sign—once you have signed your result sheet, and agreed to the result on it, it is very difficult to change later on. You may not consult notes, chess books, computers, or other materials during the game. You may not bring food or soda into the tournament hall at any time. If you need to go to the bathroom while your game is in progress, you must use the bathrooms designated for tournament players. You do not need to ask permission from the TD for this. You may not leave the tournament room during your game other than to go to the restroom if it is outside the tournament room. Exceptions can be made only if you have permission and are accompanied by a TD.

HALF-POINT BYE

One half-point bye will be available during any round, if requested by 11 a.m. on Friday, the first day

of the event. On-site registrations after 11 a.m. will receive a ½-point bye for the first round unless otherwise determined by the Chief TD. The Chief TD may grant a ½-point bye during any round, even after the cut-off, for unusual circumstances.

INTERFERENCE

No interference in any game by spectators or other players will be tolerated. Penalties include expulsion from the tournament. Only the player involved may point out irregularities. This should be done by raising your hand to summon a TD.

OTHER RULES

This is an individual tournament with team scoring. In each section, a team may have as many players as desired, but **only the top three scores count for team results and tiebreaks.** A school must have at least two players in a section in order to be eligible for team awards in that section. Players and coaches/parents are responsible for confirming the accuracy of any and all player information.

PENALTIES

Penalties for rules violations are at the discretion of the TD and may vary from warnings and time penalties to forfeitures and expulsion from the tournament.

CELL PHONES

Cell phone use is not permitted in the tournament hall by the players. **CELL PHONES MUST BE TURNED OFF IN THE PLAYING HALLS.** If a cell phone rings, a player will be assessed a time penalty on the first offense, and loss of game declared for each repeat offense during the tournament. A player using his cell phone for calling, answering a call, sending a text message, or reading text messages while the game is in progress may be forfeited instantly. **We strongly encourage players to leave their cell phones with their parents or coaches.** If a player brings a cell phone into the playing hall, it must be turned off and stowed in a back-pack, purse or chess bag for the duration of the game. Once the game begins, the cell phone must remain stowed away. Until the game ends, the player may not carry the cell phone in his hand, pocket or anywhere else. **The player must not take it to the bathroom or anywhere else.** We refer players, parents and coaches to Section 21.5 of the Scholastic Regulations.

WHAT TROPHY DID I WIN?

In cases of ties, trophies cannot be split. We will use tiebreaks to award both individual and team tro-

phies. Tied individuals and teams are considered co-champions for their grade, but will be given trophies based on tie-breaks. For individual trophies, place trophies are awarded before rating class trophies.

TIE-BREAKS

Below is the tiebreak order in which individual ties are broken in this event and an explanation of how to calculate the tiebreak total.

Individual ties for trophies are broken by Modified Median, Median, Solkoff, Sonnenborn-Berger, Cumulative, and Coin Flip, in that order. Players can win only one individual trophy. Place trophies take precedence over all other trophy awards. The team tie-breaks are Total Individual Median, Total Solkoff, Total Sonnenborn-Berger, Total Cumulative, and Coin Flip in that order.

1. Modified Median: First, the Median system sums the scores of the opponents of the player in the tie and then subtracts the high and low score. The Modified Median system for players with a plus score only removes the lowest opponent's score. For an even score, the highest and lowest opponent scores are removed, while the highest score is removed for those players with a minus score. Please note that opponents' scores are adjusted for unplayed games before being added into the sum. Unplayed game(s) of an opponent are adjusted per rule 34E1 in the rulebook.

2. Median: Definition above.

3. Solkoff: The Solkoff system is the same as the Median system except no scores are removed.

4. Sonnenborn-Berger: The Sonnenborn-Berger system adds the final score of all players they defeated with ½ the sum of the opponents' scores with whom the player drew. Nothing is added for losses or unplayed games. Example: If you beat a player who scored 3 points, drew a player who scored 4 points and lost to a player who scored 5 points, your tiebreak would be 3 for the win, 2 for the draw (½ of 4) and 0 for the loss for a total of 5 tiebreak points.

5. Cumulative: The Cumulative system adds the round-by-round total score of the player. So a win-loss-win would yield 1+1+2 or four points. One point is subtracted from the total for every unplayed win or one-point bye. One-half point is subtracted from the total for every unplayed draw or half-point bye.

6. Coin Flip

2019
SPRING
NATIONALS

2019 National High School (K-12)
March 15 - 17
Renaissance Schaumburg
Hotel & Convention Center
1551 N. Thoreau Drive
Schaumburg, IL 60173

2019 National Junior High (K-9)
April 26 - 28
Gaylord Texan Resort
and Convention Center
1501 Gaylord Trail
Grapevine, TX 76051

2019 National Elementary (K-6)
May 10 - 12
Gaylord Opryland Resort
and Convention Center
2800 Opryland Drive
Nashville, TN 37214

**New this year! All events will feature a Twitch
livestream with analysis of top games in progress.**

For complete information, see
www.uschess.org/content/view/10015/95 for hotel details
and links to all of our national events.

Approved Electronic Recording Devices

From Appendix F of the National Scholastic Regulations

Approved electronic recording devices are in common use at US Chess National Scholastic Tournaments. US Chess no longer requires players to “register” their device with the Tournament Director (TD) before game play. Players who own these devices are responsible for setting and operating them according to the instructions below. Players who do not own an approved electronic recording device should expect they may be paired against players who do.

DEVICE OWNERS SHOULD:

1. Set the device in the appropriate mode for recording moves.
2. Turn off or disable any setting(s) that could alert the player of illegal moves.
3. Make the move on the board before recording the move on the device.
4. Keep the device on the table (or immediately above the table) in plain view of the opponent at all times during the game.
5. Touch the device only when recording moves.
6. Never input “variations” in the device at any time during a game.
7. If asked by the opponent to see the player’s device to enter missing moves on their scoresheet, the player will set the device mode to algebraic (or the appropriate mode that allows the opponent to see all previous moves) and turn the device around so the opponent can view the display screen. The device will remain on the table (or immediately above the table) at all times.
8. Never take their device with them if they leave the board while the game is still in progress.
9. Be ready to take written notation if their device malfunctions (if notation is required during game play in this section). If this happens, the player should begin notation with the next move and fill-in missing moves when the player is on move by borrowing the opponent’s scoresheet or device.
10. Summon a TD when questions arise.

OPPONENTS:

1. May ask the player who owns the device to show them the device, explain its use, and ensure it is correctly set for game play for this tournament.
2. May not ask the device owner to take written notation instead of using the device.
3. May ask the device owner to see the player’s device for the purpose of entering missing moves on his/her own scoresheet. When this occurs, the device will remain on the table.
4. Should summon a TD when questions arise.

COACHES/PARENTS:

1. Are strongly encouraged to assist their players in understanding proper tournament etiquette regarding these devices before tournament play begins.
2. Should summon a TD when questions arise before the start of a game.

TOURNAMENT DIRECTORS:

1. Should check a player’s device to verify that it is correctly set when requested to do so by a player.
2. Circulate among the players during competition ensuring proper usage of the device.
3. Are not responsible for knowing how to operate each type of device.



PLYCOUNTER



eNOTATE



CHESSNOTE



MONROI PERSONAL CHESS MANAGER



Premier Camp

Caveman Chess Camp June 23-28, 2019

- 25+ years of premier camps
- Trainers: GMs Yermolinsky, Goldin, Kaidanov, Shulman, Gurevich, WGM Baginskaite, FM/FT Bachler + more
- Sections by age and strength:
 - Exploration – Open to all
 - Intensive Study (IS) Youth: 1500+
 - IS Adult: 1700+ or over age 17
 - IS Fundamental Adult: Novice to Intermediate adults only
 - IS Master Class: Over 2000; SM Alex Bian already registered
- Early registration as low as \$495



National Tournament

U.S. Junior Open June 28-30, 2019

- 6SS, G/90+30, 4 sections based on 1/1/19 age: U21, U15, U11, U8
- North Central College, Wentz Science Center, Naperville, IL
- \$55 dorm single, 23 hotels < 2.5 miles; 20+ restaurants < 1 mile
- **EF:** \$60 by 12/31, \$70 by 5/31
- **Prizes:** 60 plaques; U21: \$300 plus, for eligible 1st, entry to 2020 U.S. Jr. Closed +\$200
- **REG:** Fri 6/23 11:00 -12:30
- **RNDS:** Fri 1:00 & 6:00; Sat 9:30 & 3:00; Sun 8:30 & 2:00

= One Great Chess Experience!!

Held at North Central College in beautiful Naperville, IL
Maximize opportunities & save money by combining experiences

Register by Dec 31, 2018 to enjoy earliest registration fees

The U.S. Senior Open will also be held on campus June 28-30

Caveman Summer Open held on campus June P 22

Above is partial information – for more detail and to register:

<https://www.cavemanchess.com/events>

Facebook – Caveman Chess

TLA: <http://bit.ly/2019jrsrcchess>; Check Camps at US Chess

O'Hare and Midway airports are each ½ hour from the campus; Metra rail is only blocks away. Very affordable dormitory rooms available for the tournament – with no taxes or tips for dorm rooms. A meal plan and airport shuttle service are in the works. Watch the website for updates.

2019 American Youth Chess Foundation Grand Championship



(\$2,500 in AYCF Scholarships Being Awarded)

July 12-14, 2019

Renaissance Hotel at Sea World, Orlando, FL.

Tournament Webpage:

<http://americanyouthchessfoundation.com/2019AYCFNC.html>

Questions: Joe Hanley 714-925-3195 or
americanyouthchessfoundation@gmail.com

Past Results: Please visit hanleychessacademy.com
to see our 2017 and 2018 tournament results.

American Youth Chess Foundation (AYCF) Scholarships Awarded:

IM Joshua Sheng (CA) - \$1,750 Awarded in July 2018 "Dear Mr. Hanley, We received the money yesterday. I greatly appreciate what you are doing in encouraging young people to play chess by supporting their academics. The scholarship money you have provided will go towards funding my tuition."

Dylan Todfield (FL) - \$250 Awarded in August 2018 "Hey Mr. Hanley, I received the money today. It will help my college expenses because of the distance learning fees I have to pay since I am doing college online."

David Csuka (CA) - \$100 Awarded in February 2018



14th Annual Susan Polgar Foundation National Open For Boys & Girls

April 27 - 28, 2019 in Santa Clara, California

\$100,000+ in Scholarships & Chess Prizes

Trophies to the Top 15 places in 12 sections
& to the Top 5 School & Club Teams in each sections
Boys & Girls play in separate section in each age category!

Simul against GM Susan Polgar
Puzzle Solving - Blitz Championships - Special Guests

Organized by 2017 Organizer of the Year, Dr. Judit Sztaray.
Hosted by the 2018 Chess Club of the Year,
Bay Area Chess

Info & Register at www.SPFNO.com

Questions? ask@bayareachess.com



Save the Date(s)!



Susan Polgar Foundation & Chess NYC™ present:

13TH ANNUAL SUSAN POLGAR FOUNDATION WORLD OPEN FOR BOYS AND GIRLS

\$100,000+ in Scholarship and Chess Prizes!



Date: Friday-Monday, January 18-21

Robert F. Wagner Middle School

220 E 76th St, New York, NY 10021



***plus a FULL or HALF day of Chess NYC Fun and Training™ camp with
GM Susan Polgar and special guests!**

Further information & registration at:

www.chessnyc.com/spfwo.com

Chess NYC Play n Go's™ Popping Up All Over NYC

Chess NYC's Play N Go™ events' impact on a kids' tournament play is beginning to "document."

These weekly Chess Leagues (along with inspirational prizes) also allow the occasional attendees to "drop-in" and play when they can. They provide a "sparring environment" and matches that "count" towards USCF Ratings in a Chess Tournament setting, and they're proving to be a brilliant approach to Championship preparation.

Director Michael Propper and Team provide pre-game training and the rationalization that improvement is a "win", even if it doesn't earn a "W", pointing out that these Meets are fun prep for the big events scheduled throughout the year prior to each meet.

Players are then "paired" with (3) like-skilled opponents and play USCF rated matches with each one.

Participants are challenged to play their best game and overcome familiar and increasingly stronger opponents over and over again during the scholastic seasons.

*Chess NYC focuses them on the City, State, National, Susan Polgar World Open, and Mayor's Cup competitions.

These events have been so successful that the upcoming season of Play N Go™ now includes (4) locations and the Organization is preparing for more!

Last year Chess NYC hosted both Play N Go™ Saturdays at PS 267 and Play N Go™ Sundays at PS 183 from 11am - 2pm. The two new locations are PS

126 on Tuesday nights at 5:30 pm and PS 87 on Friday nights at 6pm. If someone forgot to register ahead of time, no worries! They can drop in and register onsite! However, Chess NYC does tend to fill up during the school year, so in order to be guaranteed a seat, the earlier a person registers beforehand the better.

By remaining "short and sweet," Play N Go™ allows time for preparation and invaluable "post matches" game review by the Coaching Staff onhand. Chess NYC's "style" leaves the kids "fresh" and excited. Enjoying the game but not draining, participants have improved their play immeasurably! Many have doubled and tripled their ratings by capitalizing on Play N Go's™ weekly!

Parents are even able to watch the Chess play behind (waist high) barriers at the outskirts of the play arena. While not permitted to "speak or motion" (lest they be asked to leave), this gives parents the

opportunity to observe play and provide support for their children as "Assistant Coaches", pointing out bad habits or potential for improvement in play based on the "arms length distance" they might witness during matches.

"This is the greatest concept we have ever come up with," lauded Company Director and Head Coach Michael Propper. "And we've just scratched the surface," he promised, adding that "kids need to feel good about themselves no matter win or lose, and Play N Go™ leads them down that path to success." He smiled and closed with "It's all good", as several Players approached him to brag about how they'd played this week.



For more information and registration, please visit www.chessnyc.com



Chess coach Rebecca overlooking junior Play n Go™ game
Photo by Shuhan Xie

2019 US CHESS ALL-AMERICA CHESS TEAM

US Chess congratulates each of the 53 members of this year's All-America Chess Team for receiving this prestigious award.

US Chess is pleased to announce the 2019 All-America Chess Team. Team members will be presented with their team jackets and plaques during this tournament on Sunday, December 16th, prior to round six.

The All-America Chess Team was created in 1987 to honor the very best players ages 18 and under. The team, one of the highest national honors attainable by a young chess player, is selected on the basis of age, rating, and chess activity during that year, similar to the selection process of "all conference" sports teams. This year's candidates were selected based on their age as of January 1, 2018, and their peak post-tournament rating from July 1, 2017 through June 30, 2018. Since this award is a "post-season" selection, the minimum rating limits in each age group are reviewed annually by US Chess staff and the US Chess Scholastic Council.



ANDREW TANG



AKSHAT CHANDRA

Age 18

(MINIMUM PEAK RATING 2500)

ANDREW TANG
AKSHAT CHANDRA

PRESENTING THE 2019 ALL-AMERICA TEAM:

Age 17

(MINIMUM PEAK RATING 2475)

JEFFERY XIONG
SAMUEL SEVIAN
CRAIG HILBY
JOSHUA SHENG
VIGNESH PANCHANATHAM
ROLAND FENG
CAMERON WHEELER
ZHAOZHI LI
BRYCE TIGLON
JOHN GABRIEL LUDWIG

Age 16

(MINIMUM PEAK RATING 2450)

RUIFENG LI
JOHN MICHAEL BURKE
NICOLAS CHECA

Age 15

(MINIMUM PEAK RATING 2425)

ADVAIT PATEL
DAVID BRODSKY

PRAVEEN BALAKRISHNAN
BEN LI
JENNIFER YU
RAYAN TAGHIZADEH

Age 14

(MINIMUM PEAK RATING 2400)

AWONDER LIANG
DAVID TIANJIAN PENG
BRANDON JACOBSON
HANS MOKE NIEMANN
CARISSA SHIWEN YIP

Age 13

(MINIMUM PEAK RATING 2350)

ANDREW ZHANG HONG
WESLEY WANG
CHRISTOPHER SHEN

Age 12

(MINIMUM PEAK RATING 2300)

JUSTIN WANG

ANTHONY BI HE
BALAJI DAGGUPATI
MAXIMILLIAN LU

Age 11

(MINIMUM PEAK RATING 2225)

CHRISTOPHER WOOJIN YOO
ARTHUR GUO
JASON YUYANG WANG
DEREK CLASBY
NICO WERNER CHASIN
ROCHELLE WU

Age 10

(MINIMUM PEAK RATING 2150)

EVAN S PARK
ERIC YUHAN LI
VYOM VIDYARTHI

Age 9

(MINIMUM PEAK RATING 2050)

LIRAN ZHOU
DIMITAR MARDOV

LIAM HENRY PUTNAM
SRIRAM KRISHNAKUMAR
ERICK ZHAO

Age 8 & Under

(MINIMUM PEAK RATING 1950)

ABHIMANYU MISHRA
BRYAN XIE
HARSHID KUNKA
STEVE WONGSO
BREWINGTON HARDAWAY
SEBASTIAN PRESTIA

Chess Life Kids is growing and changing! "Chess Adventures," starring some of your favorite chess heroes, is just one of Chess Life Kids' exciting new features.

CHESS ADVENTURES

with GM ALEX IPATOV

Alex shares some life advice.

BE DETERMINED. KEEP TRYING.

DON'T BE AFRAID OF FAILING.

I missed my 1st GM norm 5 times by half a point, but I never gave up.

I had never coded, yet this year I decided to get a master's degree in computer science.

TRY SOMETHING NEW EVERY DAY.

I went bungee jumping twice— from Macau Tower in China and from the Bloukrans Bridge in South Africa.

LOVE AND RESPECT YOUR PARENTS

BE HAPPY. WE ONLY LIVE THIS LIFE ONCE.

FILL YOUR DAY WITH MEANINGFUL ACTIVITIES.

When I was younger, I loved playing soccer and reading adventure books.

Art by Val Bochkov

RECENT K-12 CHAMPIONSHIPS WINNERS

NATIONAL SCHOLASTIC K-12 GRADE INDIVIDUAL CHAMPIONS

2008 K: Arun Khemani, Awonder Liang, Zane Ice; 1st: Benjamin Lu; 2nd: Winston Zeng, William Radak, Richard Qi, Kevin Zhou, Sam Ferguson, Albert Lu, Sam Witwer; 3rd: William Graif; 4th: Matthew Zeitlin; 5th: Kyle Shin; 6th: Michael Bodek; 7th: Nicholas Rosenthal, John Hughes, Andy Wang; 8th: Hengyi Wu; 9th: Bob Shao; 10th: Alexander Heimann, Marc Tyler Arnold; 11th: Abby Marshall, Jeffrey Haskel; 12th: Toby Boas • 2009 K: Joaquin K. Perkins; 1st: Awonder Liang; 2nd: Rayan Taghizadeh; 3rd: Ruifeng Li; 4th: Jeffrey Xiong; 5th: Christopher Wu; 6th: James A. Black; 7th: Jarod M. Pamatmat; 8th: Vincent Zhang; 9th: Michael Chiang, Justin Karp; 10th: Matthew Liu; 11th: Marc Tyler Arnold; 12th: William C. Ong • 2010 K: Peter Crowley, James Cooper; 1st: Joaquin Perkins; 2nd: Josiah Stearman, Marcus Miyasaka; 3rd: Brandon Nydick; 4th: Thomas Knoff; 5th: Cameron Wheeler; 6th: Atulya Vaidya, Kesav Viswanadha, Kendrick Nguyen, Agata Bykovtsev, Michael Gianatasio; 7th: Joshua Colas; 8th: Bryan Hu, Michael Brown, Michael Bodek; 9th: Sam Schmakel, John Hughes, Nicholas Rosenthal, Azeez Alade, Yuta Kakutani, Luciano Aguilar; 10th: Christopher Heung; 11th: Vincent Huang, Michael Vilenchuk, Michael Fang; 12th: Raven Sturt • 2011 K: Chinguun Bayaraa, Maurya Palusa; 1st: Aryaman Bansal; 2nd: Christopher Yu-Shuo Shen, Daniel Levkov, Rohan Suryawanshi, Constantine Oskiper, Corwin Cheung, Luke Robert Robitaille; 3rd: Marcus Ming Miyasaka; 4th: Rayan Taghizadeh; 5th: Christopher Chen; 6th: William Graif, Vignesh Panchanatham; 7th: Christopher Wu; 8th: Mika Brattain; 9th: Bryan Hu; 10th: Sam Schmakel; 11th: Christopher Heung; 12th: Matthew Dahl • 2012 K: Vedant Patil; 1st: Maximilian Lu, Rithik Sai Polavaram, Chinguun Bayaraa, Arthur Guo, Kirk Gazarian; 2nd: Andrew Zhang Hong, Winston Quanwei Ni; 3rd: Taran Ritesh Idnani; 4th: Charles Hawthorn, Rishabh Vuthamaraju, Chase Frutos, Tad Mrozek, Tim Deng, Marc Huang; 5th: Praveen Balakrishnan, Ryan Xu; 6th: Marcell Szabo; 7th: David Patrick Floeder, Jonathan Chiang, Jason Shi, Prateek Piniseti; 8th: Abhishek Obili, Lyubomir T. Gospodinov, Pranav Rudra; 9th: Justus D. Williams, Andy Shao; 10th: Bryan Hu, Sarah Chiang, Tyler C. Rhodes; 11th: Nicholas Rosenthal, Sam A. Schmakel; 12th: Michael Chiang • 2013 K: Grayson Kenneth Cooke, Marvin Gao, Tejas Rama, Aatish Satheesh, William Safranek; 1st: Lucas Foerster-Vialamas; 2nd: Jason Yuyang Wang; 3rd: Martin Stukan, Winston Ni, Connor Dong, Henry Hawthorn, Dylan Challenger, Tanish Kothapalle, Jacob Bakalinsky; 4th: Joaquin K. Perkins; 5th: Rick Sun; 6th: Tianming Xie; 7th: Advait Patel; 8th: Prateek Piniseti, Alexander J. Crump, Justin Lohr; 9th: Christopher Wu, Aaron Shapiro Balleisen; 10th: Joshua Colas, Justus D. Williams; 11th: Varun Krishnan; 12th: Sam A. Schmakel • 2014 K: Erick Zhao; 1st: Jonathan Chen; 2nd: Nico Werner Chasin; 3rd: Chinguun Bayaraa; 4th: Cole Nicholas Frutos, Logan Wu; 5th: Alexander John Costello; 6th: Justin Paul; 7th: Nithin Kavi, Jacob Chen; 8th: Jack Richard Easton; 9th: John Gabriel Ludwig; 10th: Andrew Liu, Christopher Wu; 11th: Joshua Colas; 12th: Samir Sen, Nicholas Eduard Desmarais • 2015 K: Aren C. Emrikian, Oliver Boydell, Caleb Staples Marshall, James Frasca; 1st: Varun Gadi, Erick Zhao; 2nd: Jonathan Chen; 3rd: Nico Werner Chasin; 4th: Maximilian Lu; 5th: Sumit Dhar; 6th: Wesley Wang; 7th: Vincent Jingwei Baker; 8th: Danial Asaria; 9th: Truman Hoang, Runya Xu, Albert Lu; 10th: John Gabriel Ludwig; 11th: Xiexin Wang; 12th: Justus D. Williams, Aaron Grabinsky • 2016: K: Inay Vellore, Dhruva Dinesh Patil, Hudson Lutfiyya; 1st: Steve Wongso; 2nd: Jack Nathaniel Yang; 3rd: Dimitar Mardov, Luke Sicong Ye; 4th: Jack Levine; 5th: Maximilian Lu, Nathaniel Lande Shuman, Gus Huston, Hersh Singh, Antony Gospodinov, Vincent Stone III, Henry Burton, Gauri Menon, Sameeth Sheshappa; 6th: Sumit Dhar; 7th: Evelyn Zhu, Wesley Wang; 8th: Rick Sun; 9th: Praveen Balakrishnan; 10th: Albert Lu; 11th: Tommy He; 12th: Abhishek Reddy Obili • 2017 K: **Jack Judy; 1st: Andrew Jiang; 2nd: Yuvraj Rudra Chennareddy, Maya Figelman; 3rd: Ronen Wilson, Erick Zhao, Spencer Chin; 4th: Liam Henry Putnam; 5th: Eddy Tian; 6th: Maximilian Lu; 7th: Logan Wu; 8th: Andy Huang; 9th: Justin Chen; 10th: Max Jiahua Li; 11th: Matthew James Stevens; 12th: Daniel Josef Cremisi, John Gabriel Ludwig**

NATIONAL SCHOLASTIC K-12 GRADE TEAM CHAMPIONS

2008 K: Oak Hall (FL); 1st: Oak Hall (FL); 2nd: Hunter College Campus Sch. (NY); 3rd: PS 116 (NY); 4th: Horace Mann (NY); 5th: Horace Mann (NY), Mamaroneck Avenue Sch. (NY), Ramaz Sch. (NY); 6th: IS 318 (NY); 7th: IS 318 (NY); 8th: IS 318 (NY), Horace Mann (NY); 9th: Bergen County Academies (NJ); 10th: Gilbert High Sch. (AZ), Bellaire High Sch. (TX); 11th: Bellaire High Sch. (TX); 12th: Columbus Alternative High Sch. (OH) • 2009 K: The Village School (TX); 1st: Dalton (NY); 2nd: New Explorations Into Science, Technology and Math (NY); 3rd: Hunter College Campus School (NY); 4th: The Village School (TX), Columbia Grammar (NY); 5th: Horace Mann (NY); 6th: I.S. 318 (NY); 7th: I.S. 318 (NY); 8th: Canyon Vista Middle School (TX); 9th: Horace Mann (NY); 10th: Westwood (TX); 11th: Bronx High School of Science (NY); 12th: Bellaire High School (TX), Westwood (TX) • 2010 K: Oak Hall (FL); 1st: Scicore Academy (NJ); 2nd: Dalton (NY); 3rd: Hunter College Campus School (NY); 4th: Stuart Hall School For Boys (LA), Scicore Academy (NJ), Joseph A. Williams Elementary School (FL); 5th: Regnart Elementary School (CA); 6th: I.S. 318 (NY); 7th: I.S. 318 (NY); 8th: I.S. 318 (NY); 9th: Veteran's Memorial Academy (TX); 10th: Horace Mann (NY); 11th: Solomon Schechter (NY); 12th: Bronx High School of Science (NY) • 2011 K: Oak Hall (FL); 1st: Oak Hall (FL); 2nd: Scicore Academy (NJ), Columbia Grammar (NY); 3rd: Universal Academy (TX); 4th: Dalton (NY), Aspen Elementary (NM), Skaggs Elementary (TX); 5th: Scicore Academy (NJ), Dalton (NY); 6th: Canyon Vista Middle School (TX); 7th: Hunter College Campus School (NY); 8th: I.S. 318 (NY); 9th: Catalina Foothills High School (AZ); 10th: Westwood (TX); 11th: Plano East High School (TX); 12th: Solomon Schechter (NY), University High (CA) • 2012 K: Oak Hall (FL); 1st: Dalton School (NY); 2nd: Dalton School (NY), Columbia Grammar (NY); 3rd: Scicore Academy (NJ); 4th: Dalton School (NY); 5th: Greenbrier West Elementary School (VA); 6th: Dalton School (NY); 7th: Kennedy Middle School (CA); 8th: I.S. 318 (NY); 9th: Stuyvesant High School (NY), Catalina Foothills High School (AZ); 10th: Catalina Foothills High School (AZ); 11th: Hanna High School (TX); 12th: Bronx Center for Science and Mathematics (NY) • 2013 K: Oak Hall (FL); 1st: Hunter College Campus School (NY), Collegiate School (NY); 2nd: NEST+m School (NY); 3rd: Hunter College Campus School (NY); 4th: Scicore Academy (NJ); 5th: The Speyer Legacy School (NY); 6th: I.S. 318 (NY); 7th: I.S. 318 (NY); 8th: Basis Chandler (AZ); 9th: NEST+m School (NY); 10th: Stuyvesant HS (NY); 11th: Whitney Young High School (IL); 12th: Stuyvesant HS (NY) • 2014 K: Kimball Wiles Elementary (FL); 1st: Dalton (NY); 2nd: P.S. 41 (NY); 3rd: Dalton (NY); 4th: Dalton (NY); 5th: The Speyer Legacy School (NY); 6th: The Speyer Legacy School (NY); 7th: I.S. 318 (NY); 8th: I.S. 318 (NY); 9th: Edgemont High School (NY); 10th: NEST+m School (NY); 11th: Stuyvesant HS (NY); 12th: Benet Academy (IL) • 2015 K: Oak Hall (FL); 1st: P.S. 77—Lower Lab School (NY); 2nd: Oak Hall (FL); 3rd: P.S. 41 (NY); 4th: Dalton (NY); 5th: P.S. 33—Chelsea Prep (NY); 6th: Jericho Middle School (NY); 7th: I.S. 318 (NY); 8th: I.S. 318 (NY); 9th: Whitney Young High School (IL); 10th: Stuyvesant HS (NY); 11th: Redmond High School (WA); 12th: Stuyvesant HS (NY) • 2016: K: Oak Hall (FL); 1st: Collegiate School (NY); 2nd: Dalton (NY); 3rd: Dalton (NY); 4th: The Speyer Legacy School (NY); 5th: Dalton (NY); 6th: Dalton (NY), Houston Middle School (TN); 7th: Jericho Middle School (NY); 8th: I.S. 318 (NY); 9th: Stuyvesant HS (NY); 10th: Whitney Young High School (IL); 11th: Millburn High School (NJ); 12th: Stuyvesant HS (NY); Redmond High School (WA); 12th: Stuyvesant HS (NY) • 2017 K: **Oak Hall (FL); 1st: Collegiate School (NY); 2nd: Collegiate School (NY), Oak Hall (FL); 3rd: Dalton (NY); 4th: Oak Hall (FL); 5th: P.S. 41 (NY); 6th: Dalton (NY); 7th: Hunter College Campus School (NY); 8th: David Drive Middle (NC); 9th: Stuyvesant HS (NY); 10th: South Miami Senior High School (FL); 11th: Whitney Young High School (IL); 12th: Christian Brothers Academy (NJ)**

FUTURE EVENTS

2019

NATIONAL HIGH SCHOOL

MARCH 15-17, 2019

Renaissance Schaumburg
1551 N. Thoreau Dr.
Schaumburg, IL 60173
847-303-4100
\$139 Single/Double
\$159 Triple/Quad

ALL-GIRLS NATIONAL CHAMPIONSHIPS

APRIL 12-14, 2019

Hyatt Regency McCormick Place
Chicago, IL 60616
888-421-1442
312-567-1234
\$165 Single/Double/Triple/Quad

NATIONAL JUNIOR HIGH

APRIL 26-28, 2019

Gaylord Texan
1501 Gaylord Trail
Grapevine, TX 76051
817-778-1000
\$155 Single/Double/Triple/Quad

NATIONAL ELEMENTARY

MAY 10-12, 2019

Gaylord Opryland
2800 Opryland Dr.
Nashville, TN 37214
615-889-1000
888-777-6779
\$171 Single/Double/Triple/Quad

U.S. JUNIOR OPEN CHAMPIONSHIP

JUNE 28-30, 2019

North Central College
Wentz Science Center-Ratio Hall
125 S. Loomis St.
Naperville, IL 60540
\$55 single, \$100 double, \$145 triple
by 5/31, \$10 more per person
thereafter

U.S. OPEN

AUGUST 3-11, 2019

Rosen Centre
9840 International Dr.
Orlando, FL 32819
407-996-9840
800-204-7234
\$129 Single/Double/Triple/Quad

NATIONAL K-12 GRADE

DECEMBER 13-15, 2019

Disney's Coronado Springs
1000 West Buena Vista Dr.
Lake Buena Vista, FL 32830
407-939-4686
\$135 Single/Double/Triple/Quad

2020

NATIONAL HIGH SCHOOL

APRIL 3-5, 2020

Memphis Cook Convention Center
Sheraton Memphis Downtown
250 N. Main St.
Memphis, TN 38103
901-527-7300
\$145

NATIONAL JUNIOR HIGH

APRIL 24-26, 2020

Hyatt Regency Jacksonville
Riverfront
225 East Coastline Dr.
Jacksonville, FL 32202
888-421-1442
\$145

NATIONAL ELEMENTARY

MAY 8-10, 2020

Gaylord Opryland
2800 Opryland Dr.
Nashville, TN 37214
615-889-1000
888-777-6779
\$176 Single/Double/Triple/Quad

U.S. OPEN

AUGUST 8-16, 2020

Embassy Suites by Hilton
Two Convention Center Plaza
Saint Charles, MO 63303
636-946-5544
\$147

NATIONAL K-12 GRADE

DECEMBER 11-13, 2020

Rosen Shingle Creek
9939 Universal Boulevard
Orlando, FL 32819
407-996-3154
866-996-9939
\$135 Single/Double/Triple/Quad

2021

SUPERNATIONALS VII

MAY 7-9, 2021

Gaylord Opryland
2800 Opryland Dr.
Nashville, TN 37214
615-889-1000
888-777-6779

NATIONAL K-12 GRADE

DECEMBER 3-5, 2021

Rosen Shingle Creek
9939 Universal Boulevard
Orlando, FL 32819
407-996-3154
866-996-9939
\$129

For more information about US Chess national championships, please visit our website at [uschess.org](https://www.uschess.org) and click on "Play" then "National Events."



TROPHIES PLUS

115 MAIN STREET BRED A, IOWA 51436

800-397-9993 | WWW.TROPHIESPLUS.COM | TROPHYMAN@TROPHIESPLUS.COM

PROUD SUPPLIER OF THE NATIONAL SCHOLASTIC TOURNAMENT AWARDS FOR US CHESS SINCE 1999

PROUD SPONSOR OF THE 2007 - 2019 ALL-AMERICA TEAMS FOR US CHESS

Recognizing Excellence
SINCE 1984