

Check is in the Mail

by FIDE Master Alex Dunne

Have Fun!



Corky Schakel worked 33 years as a chemical engineer at the 3M Company before retiring to enjoy life with his family. The joys of grandparenting a five-year-old and 18-month-old aren't lost on Corky and his wife Sally. Corky started playing correspondence chess late, age 28, during the Fischer boom, as a diversion from tournament chess. With the passing years, bridge and marathon running have been replaced by occasional roller blading and more time for chess. That time has paid off, for Corky Schakel has now been awarded the title of International Correspondence Chess Master.



Corky Schakel

I asked Corky to share some of his winning philosophy for this column. His advice was the same that he gave to his kids before every crosscountry ski race they entered (both brought home state championship gold medals with their high school teams): Have fun!

GAME OF THE MONTH

The short story "Last Round" by Kester Svendsen is a delightful story about "The Old Master" who played a Danish Gambit and won a brilliant victory. Corky had purchased John Lute's *Danish Gambit*. He was playing the very strong Kristo Miettinen in the semifinal round of a Golden Knights tournament. Everything was ready...

DANISH GAMBIT [C21]

W: IM Corky Schakel (2381)

B: Kristo Miettinen (2364)

2002 Absolute Championship

Notes by Corky Schakel

1 e4 e5 2 d4 exd4 3 c3 dxc3 Black does not need to take the c-pawn:

3...Nc6 allows White to play 4 Nf3, the Goring Gambit, which is sounder for White (and a lot less manic).

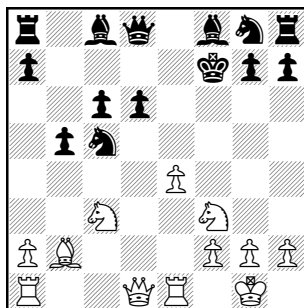
4 Bc4 cxb2 5 Bxb2 c6 This is the Horowitz Defense. Lutes cites earlier I. A. Horowitz books which suggest that this is a refutation of the Danish. All White can do is develop pieces and hope.

6 Nc3 d6 7 Nf3 Nd7 I'm down two pawns. What was I thinking playing this wild opening?

8 0-0 Nc5 Horowitz recommends this (followed by 9...Be6, forcing the retreat or exchange of White's "mighty bishop" on c4). Lutes-Butters continued 9 Qe2 Be6 10 Nd5 Ne7 11 Nf4 Bxc4 12 Qxc4 Nc8 13 Rfd1 Qc7 14 Qe2 Nb6 15 Rac1 0-0-0 16 e5 d5 17 Bd4... and Lutes recommends 17...Ne6! with a solid game for Black.

9 Re1 b5 Kristo had played ...b5, earlier, in a previous game. Challenging that "mighty bishop" with ...Be6 seems safer.

10 Bxf7+ Kxf7 (diagram)



after 10...Kxf7

With the king exposed, Black will have a difficult time getting to a draw.

11 Ne5+ Ke8 12 Nxc6 Qd7 Here 12...Qb6 may be better, but the exposed king will still be Black's problem.

13 Qh5+ g6 14 Qf3 Bb7 15 Na5 h5 Now the two pawns come back with interest.

16 Nd5 Rh7 17 Nxb7 Qxb7 18 e5 Kd7 19 Rad1 1-0 White has too many threats: 18...Rd8 19 Bd4 or 18...Rc8 19 exd6 winning material.

"There is as much difference between playing a game well, by correspondence, and playing one well over the board, as there is between writing a good essay, and making a good speech." —Richard Penn

Jack Klaus is the new manager of a very small postal chess club called the Poverty Postal Chess League that strives for a friendly, non-competitive atmosphere. Interested readers may

contact the club at Jack Klaus, 12721 E. 63rd Street, Kansas City, MO 64133 or jack_klaus@email.com.

Our US fifth board produces an instructive finish—after 41 Qxd6 Ng4+ 42 Kh3 Nxf2+ 43 Kh2 Rb1 there is no escaping the loss.

NIMZO-INDIAN DEFENSE [E32]

W: Stephen Cameron (2087)

New Zealand

B: IM Michael Millstone (2411) USA

15 Olympiad 2003

1 d4 Nf6 2 c4 e6 3 Nc3 Bb4 4 Qc2 0-0 5 a3 Bxc3+ 6 Qxc3 b6 7 Bg5 Ba6 8 Nf3 d6 9 e3 Nbd6 10 Bd3 c5 11 0-0 Rc8 12 b3 cxd4 13 exd4 b5 14 Nd2 bxc4 15 bxc4 h6 16 Bh4 Bxc4 17 Nxc4 d5 18 Qb3 dxc4 19 Bxc4 Nb6 20 Ba6 Rc6 21 Rfd1 Rd6 22 Qb4 Nbd5 23 Qc4 Qb6 24 Bb5 Ne4 25 Bg3 Nxg3 26 hxg3 Rfd8 27 Rab1 Qa5 28 Rdc1 a6 29 Bc6 Rc8 30 Qd3 Qc7 31 Bb7 Qxc1+ 32 Rxc1 Rxc1+ 33 Kh2 Rc3 34 Qd2 Rxa3 35 Qb2 Ra5 36 Qc2 g6 37 Qd2 Rb5 38 Qc2 Kg7 39 Qe2 Rxb7 40 Qe5+ Nf6 0-1

After some sparring, White spots an indefensible c7-square and Black's game folds.

SCOTCH GAME [C45]

W: Floyd Halwick Jr. (2301)

B: Guillermo Cesar Muttoni (2275)

ICCF 2000

1 e4 e5 2 Nf3 Nc6 3 d4 exd4 4 Nxd4 Bc5 5 Be3 Qf6 6 c3 Nge7 7 Bc4 0-0 8 0-0 Bb6 9 Na3 Qg6 10 Qd2 Qxe4 11 Rae1 Qg4 12 h3 Qg6 13 Bd3 f5 14 Nxc6 Nxc6 15 Bxb6 axb6 16 Nb5 Kh8 17 b3 d6 18 Nxc7 Ra5 19 f4 d5 20 b4 Ra3 21 Qb2 Ra7 22 Re2 Bd7 23 Rd1 Rd8 24 b5 Ra5 25 c4 Na7 26 Bb1 Qf7 27 Rxd5 1-0

Advocates of the theory that chess is a fight will enjoy this one—from a team match with the Pennsylvania Keystones against the Four Corner Kings & the Duke.

SICILIAN DEFENSE [B97]

W: John Caliguire (2150)

B: Mark Ludwig (1993)

CCLA Team Championship 2003

1 e4 c5 2 Nf3 d6 3 d4 cxd4 4 Nxd4 Nf6 5 Nc3 a6 6 Bg5 e6 7 f4 Qb6 8 Qd2 Qxb2 9 Rb1 Qa3 10 f5 Nc6 11 fxex6 fxe6 12 Nxc6 bxc6 13 e5 Nd5 14 Nxd5 cxd5 15 Be2 dxe5 16 0-0 Ra7 17 c4 Qc5+ 18 Kh1 d4 19 Bh5+ g6 20 Bd1 Be7 21 Ba4+ Kd8 22 Rf7 h6 23 Bxh6 e4 24 Re1 e5 25 Rxe4 Bf5 26 Re1 Be6 27 Rg7 Bxc4 28 Rxg6 Rc7 29 Bg7 Rh5 30 Rh6 Rf5 31 Rh8+ Bf8 32 Bxf8 Rxf8 33 Rxe5 Rcf7 34 Qg5+ 1-0

Correspondence Chess Tournament Updates for March 2004

CONGRATULATIONS!

MASTERS CERTIFICATE WINNERS

Victor Ying 2204
Carl L. Siefring 2201

8th Steve Sinding
9th Michael W. Bates
10th John M. Dowling
11th Boris Orlov
12th Chris T. Sergel
13th Daniel E. Gosling
14th Howard D. Trimpi
15th James G. Traci

TROPHY QUAD WINNERS

Gilbert W. Chavez Jr. 02QC14 5½-½
Kevin Dunn 02QD16 6-0

JOHN W. COLLINS MEMORIAL CLASS

TOURNAMENT WINNERS

Normand Bissonnette 03CM8 5-1
Jack E. Maxfield 03CM16 5-1
Robert A. Huiner 02CB27 5½-½
Peter Lee Swan 01CM72 5½-½
Boyd M. Reed 02CA77 5-1

PARTICIPANTS IN 2003

ABSOLUTE CHAMPIONSHIP

David J. Novak
Richard Title
Wesley T. Brandhorst
Peter Evans
Ciaran O'Hare
Corky Schakel
Kristo Miettinen
N. Eric Pedersen
Lawrence J. Coplin
James H. Fisher Jr.
Michael S. Calogridis
Joseph L. Shipman
William F. Gray Jr.

FINAL PRIZE WINNERS FOR THE 1995 GOLDEN KNIGHTS CHAMPIONSHIP

1st Robert F. Keating
2nd Alreza Fallahi
3rd Robert Merton Jacobs
4th Antonie Boerkoel
5th Abe L. Wilson
6th Richard Smouse
7th Nick Rashev

CORRESPONDENCE CHESS PLAYERS

You are invited to send me your comments, questions and correspondence games (with or without annotation). Because of the volume of mail, submissions cannot be returned, and personal replies are not possible. Send letters to: Alex Dunne, *Chess Life*, 3054 US Route 9W, New Windsor, NY 12553 or e-mail: alex.dunne@cqservices.com

POSTAL BEAUTY CONTEST

Is it right that beauty is so often only its own reward? Surely not! And thanks to the generosity of Dr. Ronald Hames, the scales of justice have become more evenly balanced between how one wins and the hard fact of victory. For now in *Chess Life* the players who conduct scintillating games will receive the Hames Correspondence Game of the Year Awards.

Resident postal editor Alex Dunne is the judge of a contest with prizes of \$100 for the best game by a master and \$100 for the best game by a non-master to appear in *Check is in the Mail* during a given year. What better reason, then, to send your postal brilliancies to Alex Dunne?

CHECK OUT USCF'S CORRESPONDENCE CHESS RATED EVENTS

USCF's 57th ANNUAL

2004 Open Correspondence Chess Golden Knights Championship
\$1,500 First Prize

(plus title of USCF's Golden Knights Champion and plaque)

• 2nd place \$800 • 3rd place \$600 • 4th place \$400 • 5th place \$200 • 6th thru 10th place \$100 each. **Entry fee: \$25.**

The entry deadline is November 30, 2004.

These USCF Correspondence Chess events are rated and open to all USCF members who reside on the North American continent, islands, or Hawaii, as well as those USCF members with an APO or FPO address. USCF members who reside outside of the North American continent are welcome to participate in e-mail events. Your USCF membership must remain current for the duration of the event, and entry fees must be paid in U.S. dollars. Those new to USCF Correspondence Chess, please estimate your strength: **Class A:** 1800-1999 (very strong); **Class B:** 1600-1799 (strong); **Class C:** 1400-1599 (intermediate); **Class D:** 1399 and below (beginner level). **Note:** Prize fund guaranteed (based on 400 entries) and will be increased or decreased proportionately per number of entries assigned.

CORRESPONDENCE CHESS MATCHES (TWO PLAYERS)

\$5 entry fee per person with two, four or six game options.

WIN A CORRESPONDENCE CHESS TROPHY

Four-player, double round-robin with class-level pairings. 1st place winner receives a trophy. **Entry fee: \$10.**

VICTOR PALCIAUSKAS PRIZE TOURNAMENTS

Seven-player class-level pairings, one game with each of six opponents. Players must have a USCF CC rating to enter. 1st-place winner receives \$130 cash prize and a certificate signed by Victor Palciauskas. **Entry fee: \$25.**

JOHN W. COLLINS MEMORIAL CLASS TOURNAMENTS

Four-player, double round-robin with class-level pairings (unrateds welcome). 1st-place winner receives a John W. Collins certificate.

Entry fee: \$7.

E-MAIL RATED EVENTS (NEED E-MAIL ACCESS):

LIGHTNING MATCH Two players with two, four or six game option. **Entry fee \$5 per person.**

Swift Quads Four-player, double round-robin format. 1st-place prize merchandise credit of \$30. **Entry fee: \$10.**

Express Tournament

Seven-player events, one game with each of six opponents. Prizes: **1st place** \$30 merchandise credit, **2nd place** \$20 credit. **Entry fee: \$15.**

Please circle event(s) selected.



U.S. Chess Federation
www.uschess.org

USCF's 1st ANNUAL

2004 E-mail Correspondence Chess
Electronic Knights Championship

(Seven-player sections, one game with each of six opponents.)

\$1,500 First Prize

(plus title of USCF's Electronic Knights Champion and plaque)

• 2nd place \$800 • 3rd place \$600 • 4th place \$400 • 5th place \$200 • 6th thru 10th place \$100 each. **Entry fee: \$25.**

The entry deadline is November 30, 2004.

These USCF Correspondence Chess events are rated and open to all USCF members with e-mail access. Your USCF membership must remain current for the duration of the event, and entry fees must be paid in U.S. dollars. Maximum number of tournament entries allowed for the year for each player is ten.

Note: Prize fund guaranteed (based on 400 entries) and will be increased or decreased proportionately per number of entries assigned.

NOTE: Except for Lightning Matches, Swift Quads and Express Tournaments, players will use post office mail, unless opponents agree to use e-mail.

TO ENTER: 800-388-KING (5464) FAX 845-561-CHES (2437)

Name _____
USCF ID# _____
Address _____ City _____
State _____ ZIP _____ Phone _____
E-mail _____
Credit card # (VISA, MC, Discover, AMEX) _____ Exp. date _____
If using VISA, need V-code _____

Check here if you do not wish to have an opponent who is incarcerated.

Sending a check? Make it payable to U.S. Chess and mail to: 3054 US Rt. 9W, New Windsor, NY 12553