



The Check Is in the Mail February 2008

Jason Bokar – GM



Jason Bokar, at age 43, is our newest Grandmaster. Jason was born May 16, 1964. Since that date, correspondence chess has evolved quite a bit. Jason has traversed the route from post cards to email to webserver, and he strongly believes that the webserver is the best way to play CC. Gone are the lost postcards and stray emails. Gone are the tedious bookkeeping records. And, yes, sadly, some of the more human elements of the old ways.

Jason offers some advice to the improving player. As computers are illegal for USCF play, the advice is meant for US players on the international scene: “Don’t rely on computer playing programs! Perhaps almost all of the top players use them now, but if you rely on them, they take over your imagination. Having an

imagination is probably one of the best chess assets. Some of the games I have won (or saved via a draw) were from being imaginative! I suggest playing regular OTB chess often as well, as it always recharges my imagination! Finally, if you want to play internationally, get in touch with the ICCF-US office. Play often and let them know you exist!”

CC Career Highlights

9th 1989 Golden Squires; 1st NAPZ Master Class 1999; 1st NAPZ Master Class 2000; 1st 14th USCC Championship Prelim, Group 2; 1st 1999 EXCLAM! Open; 2nd (shared) 1st NAPZ EM Championship Final 2003; 3rd Olympiad XV Prelims, Board 3, 2004; 2nd Interzonal 2002, Board 3 (2004); 2nd 14th USCC Championship Final (2005); 1st (shared) Cecil Purdy Jubilee Tournament B (2006); 3rd in the 4th NAPZ Championship 2006; ICCF Olympiad 15 Final, Board 2.

GAME OF THE MONTH

Jason demonstrated the fine art of squeezing your opponent in this win on Board 2.

SEMI-SLAV DEFENSE (D43)

White: GM Jason Bokar (2571)

Black: IM Hermann Knoll (2643)

15 Olympiad 2007

1.Nf3 d5 2.d4 Nf6 3.c4 c6 4.Nc3 e6 5.Bg5 h6 6.Bh4 dxc4 7.e4 g5 8.Bg3 b5 9.Be2

For his Pawn, White has a big lead in development, a mobile center, and a weakened Black kingside. The debate is whether that is enough.

9...Bb7 10.h4

The two moves that best strike to the heart of the issue are this move and 19. e5. Take your pick, but the GM says 10. h4.

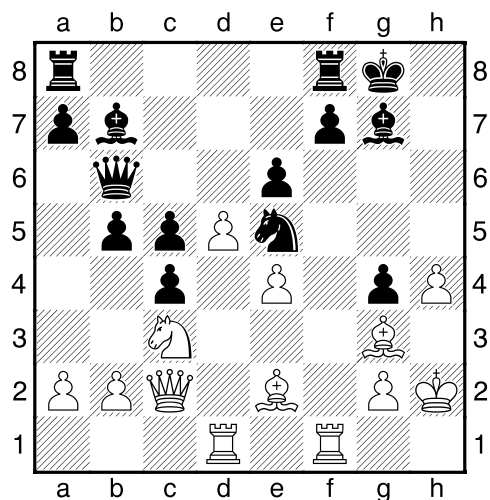
10...g4 11.Ne5 h5 12.0-0 Nbd7 13.Qc2 Nxe5 14.Bxe5 Bg7 15.Rad1 0-0 16.Bg3

Too messy is 16, f3?! Nd7 17. Bxg7 Qxh4 18. fxc4 Kxg7 19. gxh5 Nf6 when White's King is more precarious than Black's.

16...Nd7 17.f3 Qb6 18.Kh2 c5

A blunder would be 18...Bxd4? 19. Rxd4! Qxd4 20. Rd1 when Black has too many weaknesses to survive.

19.d5 Ne5 20.fxc4 hxc4



The result of the opening is this unbalanced position where Black dominates the a-c files, and White dominates the rest of the board. The resulting battle would seem to favor White despite the Pawn minus.

21.Qc1!

A key move, pinpointing Black's weak dark squares on the kingside.

21...Rae8 22.dxe6 Rxe6 23.Rf5 Rfe8 24.Nd5 Bxd5 25.Rxd5 Qb7 26.Qd1

The Queen shifts and the center of gravity shifts with her. Suddenly White dominates the d-file and the g4 square..

26...a6 27.Rg5 f6 28.Rgxe5! Rxe5

After 28...fxe5 29, Bxg4 R6e7 30. Bf5 Black has less defense on the kingside due to the threats of Qh5 and Rd6.

29.Bxe5 Rxe5 30.Rxe5 fxe5 31.Bxg4

White's attack has regained the Pawn but in a position that remains very unbalanced. Black's defensive problems, however, remain huge. White has the dominate Queen (threat right now: Qd6) better Bishop, and united passed Pawns on the kingside that may be used for the attack.

31...Qc6 32.Qd8+ Bf8 33.Kh3 Kf7

The e-Pawn is poison: 33...Qxe4 34. Be6+ Kg7 35. Qd7+ Kh6 36. Bf5 Qe3+ 37, g3 Bg7 38. Qd6+ and mate follows.

34.Bh5+ Kg8 35.Qg5+ Bg7 36.Qf5

The white squares are dominated. Black's queenside has remained stagnant in the face of White's aggression.

36...Kh8 37.Bf7 Qh6 38.Bd5 Qf6 39.g4

After 38...Qxf5 39. exf5 the ending could be 39...e4!? 40. Bxe4 Bxb2 41. g5 Kg7 42. h5 c3 43. f6+ Kg8 44. Bd5+ Kf8 45. g6 c2 46. g7+ 1-0

TOP 10 RATED WOMEN PLAYERS

Jamie Calvin	2218
Roselie Estey	1956
Carla Kemp	1900
Maggie Betancourt	1771
Natira DeMerchant	1700
Nona Oldner	1658
Linda Clarke	1651
Jasmine Dilucci	1643
Harmony Mosby	1623
Janet Peterson	1607

JANUARY RESULTS

Walter Muir

Cory Moran	07W43	5 ½-½
Joe Hoffmann	07W37	6-0
Steven van Enk	07W29	4 ½-1 ½
Gary Walters	07W29	4 ½-1 ½
Steven Owens	07W41	6-0
Crawford Daniels	07C02	6-0
Steven van Enk	07W33	5 ½- ½
Alexander Traxler	07W49	6-0

Palciauskas Tournament

Wesley Gales	05P02	5-1
Jeffrey Baffo	05P02	5-1
David Middleton	06P04	5-1
Mark Maynard	06P04	5-1
Allen Herridge	06P04	5-1

John Collins

Rick Shepard	05CA20	4 ½-1 ½
Emanuel Chosak	06C29	6-0

CLASSIFIED ADS

LEARN CHESS BY MAIL ! Lessons given by mail, telephone, ICC – many different ways. I specialize in players rated 800-2100 who would like to improve their game. Contact me for information. Alex Dunne, 324 West Lockhart St., Sayre, PA 18840 or alex.dunne@stny.rr.com

REPORT ON ANGELS

Only three Angels volunteered for the program to take over games left orphaned by silent withdrawals. Since the response was so light, there does not seem to be enough support for such a program. Special thanks to those who volunteered, however

**U.S. CORRESPONDENCE
CHESS CHAMPIONSHIPS
18th Postal Entries due Feb.
15, 2008**

**2nd Server Entries due Feb.
15, 2008**

All APCT, CCLA and USCF
members
with postal ratings over 2000 or
OTB over 2100

Details at

www.iccfus.com/ne040210.htm

Or write to ICCF-US for order
form

16052 Quality Ct. S.
Lakeland MN 55043

DRAWS AT CC

Tim Harris asks an interesting question to which I have no direct answer. He wonders what the CC record is for the most consecutive draws by a player, regardless of rating and if there is a CC player who has a career record for the most draws.

I couldn't answer Tim's question directly, but I did get some information on the frequency of draws by rating. As a sample, I selected the Walter Muir tournaments of 2006 (almost completed now) as they were divided by Class and discovered the following percentages of draws:

Class D -- 10%

Class C – 9%

Class B – 16%

Class A – 50%

Expert/ Master – 18%

To compare these results I also took the 2007 Absolute as it also started in 2006 and is almost finished, In the Absolute I found the draw percentage was 53%.

As to the players with the most draws? Two names come to mind from the Absolutes -- Dave Burris scored +1 =11 in 1997 and more recently Dave Novak scored -1 =11 in 2004.

The title of Drawing Master probably belongs to David Novak who scored 70% draws over 2001-2004, a +9 -5 =34. David was quite successful, however, winning the 2001 Absolute.

Van Enk and Walters Share First in 07W29 Walter Muir

Steven VanEnk	2566			=	=	1	=	1F	1	4½-1½
Gary Walters	2093	=	=			1	=	1F	1F	4½-1½
William Young	2058	0	=	0	=			1F	1F	3-3
Guy Hadley	2086	0F	0	0F	0F	0F	0F			0-6

SICILIAN DEFENSE (B82)

White: Gary Walters (2093)

Black: William Young III (2058)

2007 Walter Muir

1.e4 c5 2.Nf3 Nc6 3.d4 cxd4 4.Nxd4 Qb6 5.Nb3 Nf6 6.Nc3 e6 7.Bd3 a6 8.Be3 Qc7 9.f4 d6 10.Qf3 b5 11.0-0 Bb7 12.a4 b4 13.Nb1 Be7 14.a5 Nd7 15.N1d2 Bf6 16.Nc4 0-0 17.Qf2 Rae8 18.Rad1 Kh8 19.Bb6 Qb8 20.e5 dxe5 21.Be4 Nxb6 22.axb6 Rd8 23.Nc5 exf4 24.Nd7 Rxd7 25.Rxd7 Na5 26.Nxa5 Bxe4 27.b7 f3 28.gxf3 Bd5 29.Qc5 Rg8 30.Qxb4 Be5 31.Rxd5 exd5 32.Nc6 Qe8 33.Nxe5 Qxe5 34.Re1 Qb8 35.Re7 a5 36.Qc5 1-0

Victor Palciauskas 05P02

In a closely contested contest, Wesley Gales and Jeffrey Baffo finished at the top of the list. Joel Levine was also undefeated but ceded one more draw. In the following game Jeffrey Baffo shows how dangerous an opponent he is, turning a probable draw into a win at almost the last moment.

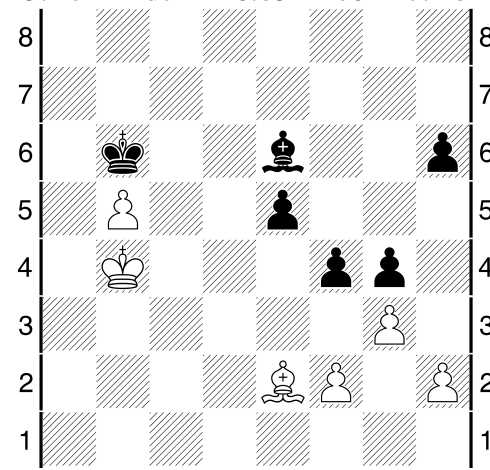
BENKO COUNTER GANBIT (A58)

White: Charles Musgrove (2140)

Black: Jeffrey Baffo (2301)

2005 Palciauskas Tournament

1.d4 Nf6 2.c4 c5 3.d5 b5 4.cxb5 a6 5.bxa6 g6 6.Nc3 Bxa6 7.g3 d6 8.Bg2 Bg7 9.Nf3 Nbd7 10.Rb1 Nb6 11.b3 Bc8 12.Nh4 0-0 13.0-0 Ng4 14.Bb2 Bxc3 15.Bxc3 Rxa2 16.e4 Ne5 17.Ra1 Rxa1 18.Qxa1 Qc7 19.Bxe5 dxe5 20.Rc1 Bd7 21.Nf3 f6 22.Qc3 Rc8 23.Ne1 e6 24.Nd3 exd5 25.exd5 Qd6 26.Nxc5 Nxd5 27.Qd2 Rxc5 28.Rxc5 Qxc5 29.Qxd5+ Qxd5 30.Bxd5+ Kf8 31.Kf1 Ke7 32.Ke2 Kd6 33.Bg8 h6 34.b4 f5 35.Ke3 g5 36.Bc4 Bc6 37.Ba6 g4 38.Bd3 Bd7 39.Kd2 Kc6 40.Kc3 Kd5 41.Ba6 Kc6 42.Kb3 Be6+ 43.Bc4 Bc8 44.Ka4 Kb6 45.Be2 Bd7+ 46.b5 Be6 47.Kb4 f4



48.Bc4 Bxc4 49.Kxc4 f3 50.Kd5 Kxb5 51.Kxe5 Kc4 52.Ke4 Kc3 0-1

SICILIAN DEFENSE (B22)

White: Steven van Enk (2507)

Black: Michael Hensley (2058)

Walter Muir 2007

1.e4 c5 2.c3 d5 3.exd5 Qxd5 4.d4 e6
5.Nf3 Nf6 6.Na3 Nc6 7.Be3 cxd4 8.Nb5
Qd8 9.Nbxd4 Nd5 10.Nxc6 bxc6 11.Bd4
f6 12.Bc4 Be7 13.0-0 0-0 14.Qc2 e5
15.Be3 Be6 16.Bd3 Nxe3 17.Bxh7+
Kh8 18.fxe3 Bc5 19.Bd3 Bxe3+ 20.Kh1
Rf7 21.Qe2 Rd7 22.Rad1 Qb6 23.Rde1
Bh6 24.Bb1 Qb8 25.Qe4 Qg8 26.Nh4
Bf7 27.Ng6+ Bxg6 28.Qxg6 Re8 29.Bf5
Rd2 30.Rf3 Re7 31.Rh3 Rf2 32.Rd1
Rxf5 33.Qxf5 Re8 34.Qg6 Qe6 35.Rhd3
f5 36.Qxe6 Rxe6 37.Rd6 Re7 38.Rd7
Re8 39.Rd8 Rg8 40.Kg1 e4 41.Kf2 Bg5
42.Rxg8+ Kxg8 43.Rd6 Bf4 44.Rxc6
Kf7 45.g3 Bb8 46.Ke3 Ke7 47.b4 g5
48.c4 f4+ 49.gxf4 Bxf4+ 50.Kxe4 Bxh2
51.Rg6 Bg3 52.Rxg5 Be1 53.a3 Kd6
54.Ra5 Bf2 55.c5+ Kc6 56.Rxa7 Bxc5
57.bxc5 Kxc5 58.Rd7 1-0

Wesley Gales	2308	=	=	1	1	1	1	1	5-1
Jeffrey Baffo	2301	=	=	1	1	1	1F	1	5-1
Joel Levine	2375	=	=	1	=	=	1	1	4 1/2-1 1/2
William Clark	2072	0	0	0	=	=	1F	1	2 1/2-3 1/2
Charles Musgrove	2140	0	0	0	=	=	0	0	2-4
Rick Earsley	2006	0	0	0	=	=	1F	1	1-5
Marcus Peterson	2171	0	0	0	=	=	0F	1	1-5

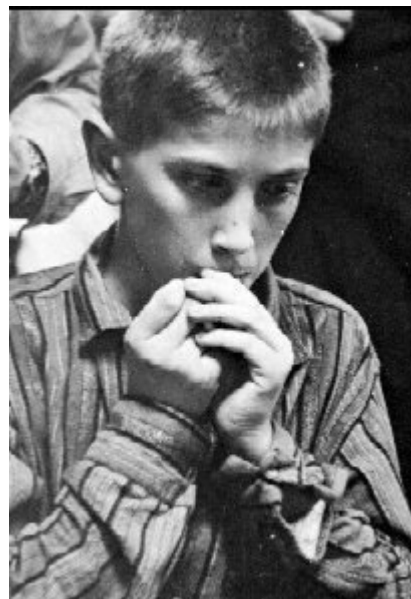
OBITUARY

Victor Palciauskas Tournament 05P02

Steven van Enk scores an undefeated win in Muir 07W33.

Walter Muir 07W33

van Enk	2507			1	=	1	1	1	1	5 1/2 1/2
Michael Hensley	2058	0	=			1	1F	1	=	4-2
Adam Bell	2123	F	F	0	F			1	1	2-4
Robert Beavan	2038	0	0	0	=	F	F			1/2 5 1/2



Bobby Fischer 3/9/1943-1/17/2008

Robert James Fischer, the 11th World Chess Champion, died at the symbolic age of 64 in Reykjavik, Iceland. It is not well known that Bobby Fischer played correspondence chess early in his career. That may be because Fischer dropped out without completing his games. Here is an example of his early play (Before he even won the US Junior championship).

KING'S INDIAN DEFENSE (E70)

White: A. Conger (1698)

Black: Robert Fischer (1774)

1955 Golden Knights

1.d4 Nf6 2.c4 g6 3.Nc3 Bg7 4.e4 d6
5.Bg5 h6 6.Bh4 0-0 7.f4 c5 8.d5 Qa5
9.Qd2 Qc7 10.Bd3 e6 11.Nb5 Qb6
12.Nxd6 1-0

Doesn't anybody play simple chess anymore? These two strongmen go at each other with anvils and boulders. The winner is the one who read Jon Edwards The Chess Analyst

FRENCH DEFENSE (C18)

White: Laurence Bonsack (1983)

Black: Don Schultheis (2102)

2002 Golden Knights semifinals

1.e4 e6 2.d4 d5 3.Nc3 Bb4 4.e5 c5 5.a3
Bxc3+ 6.bxc3 Ne7 7.Qg4 Qc7 8.Qxg7
Rg8 9.Qxh7 cxd4 10.Kd1 Nbc6 11.Nf3
dxc3 12.Ng5 Nxe5 13.Bf4 Qb6 14.Bxe5
Rxf7 15.Bxc3 Qxf2 16.Bb5+ Kd8
17.Rf1 Qc5 18.Rxf7 Qxb5 19.Rf8+ Kd7
20.Bb4 Kc6 21.Qxe7 Qb6 22.Rb1 Qg1+
23.Kd2 Qxg2+ 24.Kc1 Qg1+ 25.Kb2
Qd4+ 26.Ka2 Qc4+ 27.Ka1 Kb5
28.Bc5+ Ka5 29.Qd8+ b6 30.Bxb6+
Ka6 31.Bxa7 Qc3+ 32.Rb2 Qxa3+
33.Kb1 1-0

Times change: correspondence chess has sped up. This CC tournament was started in January 2008 and this game finished in January – and it is a nice finish by Joe Hoffmann, too !

FRENCH DEFENSE (C17)

White: Joe Hoffmann (1644)

Black: Ethan Civan (1705)

2008 Walter Muir

1.e4 e6 2.d4 d5 3.Nc3 Bb4 4.e5 c5
5.Bd2 Nh6 6.Nb5 Bxd2+ 7.Qxd2 0-0
8.f4 a6 9.Nd6 cxd4 10.Nf3 Nc6 11.Nxd4
f6 12.Nxc8 Qxc8 13.Nxc6 bxc6 14.exf6
Rxf6 15.0-0-0 Nf5 16.g4 Nd6 17.g5
Rf8 18.Bd3 c5 19.c3 c4 20.Bb1 Qb7
21.Rhe1 Rfe8 22.Re2 Rab8 23.Rde1
Qd7 24.g6 h6 25.f5 Nxf5 26.Bxf5 exf5
27.Qxd5+ 1-0

On his way to a draw, Jemty walks into a forever pin and the draw disappears forever.

KING'S INDIAN DEFENSE (E92)

WHITE: William Jemty (2134)

Black: John Burton (2431)

2001 Golden Knights semifinal

1.d4 Nf6 2.c4 g6 3.Nc3 Bg7 4.e4 d6
5.Nf3 0-0 6.Be2 e5 7.dxe5 dxe5 8.Qxd8
Rxd8 9.Bg5 Re8 10.Nd5 Nxd5 11.cxd5
c6 12.Bc4 cxd5 13.Bxd5 Na6 14.0-0-0
Nc7 15.Bb3 Be6 16.Bxe6 Nxe6 17.Be3
f5 18.exf5 gxf5 19.Kb1 Bf6 20.Rd5
Rad8 21.Rhd1 b6 22.g3 Rxd5 23.Rxd5
Rd8 24.Rxd8+ Nxd8 25.Kc2 Nc6
26.Kc3 e4+ 27.Nd4 b5 28.b3 h6 29.a4
a6 30.h3 h5 0-1