



# The Check Is in the Mail

August 2008

## 2000 Golden Knights – Abe Wilson



## 2000 G. K. STANDINGS

Abe Wilson	44.60
John Burton	41.20
Gary Adams	40.75
Wesley Gales	40.60

Guido Stueber	40.60
Robert Keating	40.10
Javy Gwaltney	38.40
Gerald Weiner	38.40
Chuck Cullum	38.35
James Wood	37.20
John Johnsrud	36.75
Dana Daves	34.95
Donald Schultheis	34.65
Javy Gwaltny	34.50
Paul Kolis	34.00
Brian Stewart	33.85
Gordon Everitt	33.40
Michael Agulnick	32.85
Robert Beavan	32.75
Walter Brower	30.15
Thomas Green	29.35
Wayne Pressnall	28.95
Corky Schakel	28.90
Albert Rothaus	28.40
John Blood	28.35
Daniel Woodard	28.35
Javy Gwaltney	27.25
John Orlowkli	26.75
Gardner Johnson	26.60
Jason Braun	24.90
Auro Bustillo	23.40
Mark Filkins	23.25
Webster Phillips	22.15
William Jemty	21.25
Danny Benkert	21.15
Ernest Chace	20.50
Gardner Johnson	19.20
James Osborne	18.25
Gardner Johnson	17.60
Stanley Klein	17.15
Edward Addis	16.65
James Johnson	13.40

## **Abe Wilson of Hawaii 2000 Golden Knights Champion**

Abe Wilson was born and raised in Hawaii. He joined the Hawaiian Telephone Company while attending the University of Hawaii and retired in 2002. Abe considers retiring early (age 55) a blessing since he can now spend most of his time with his wife Chie (a retired jeweler) attending daily mass, practicing Tai Chi, helping his wife with her internet book business, and, yes, working on chess.

Abe started correspondence chess with the 1987 Golden Knights. He entered one section of the Golden Knights each year, progressing through the ranks. He became a correspondence chess master in 1999. Abe's earlier CC successes include two Fifth place finishes in the 1995 and 1996 Golden Knights.

### **GAME OF THE MONTH**

When this game started (December of 2005) the line selected was one of the most popular lines and continues to be to this day. Gordon Everitt as Black tries an apparent TN on Move 23, but it does not prove satisfactory.

#### **SICILIAN DEFENSE (B33)**

**White: Abe Wilson (2336)**

**Black: Gordon Everitt (2342)**

**2000 Golden Knights Finals**

**1.e4 c5 2.Nf3 Nc6 3.d4 cxd4 4.Nxd4 Nf6 5.Nc3 e5 6.Ndb5 d6 7.Bg5 a6 8.Na3 b5 9.Bxf6 gxf6 10.Nd5 f5 11.Bd3 Be6 12.0-0 Bxd5 13.exd5 Ne7 14.c3**

It's well-known now that the superficially attractive 14. Nxb5 leads to

nothing after 14...e4 15. Be2 Bg7.16. Nd4 Qb6

**14...Bg7 15.Qh5 e4 16.Bc2 Qc8 17.Rad1**

This was then. Now 17. Rae1 has surpassed this line in popularity.

**17...Qc5 18.Bb1 b4 19.cxb4 Qxb4 20.Nc2 Qxb2 21.Ne3 Qf6**

Black has stolen a Pawn. The question becomes will White's center and kingside play make up for the deficit ?

**22.f3**

White has to open up lines for his pieces before Black can consolidate.

**22...Bh6 23.Rfe1**

This is the TN that failed. Previously played here and satisfactory for Black was 23...Bxe3+ destroying White's best attacking piece, Fugarasl-Volzhin, Budapest 2000. As it turns out, the Knight will live to dominate the middle and endgame play.

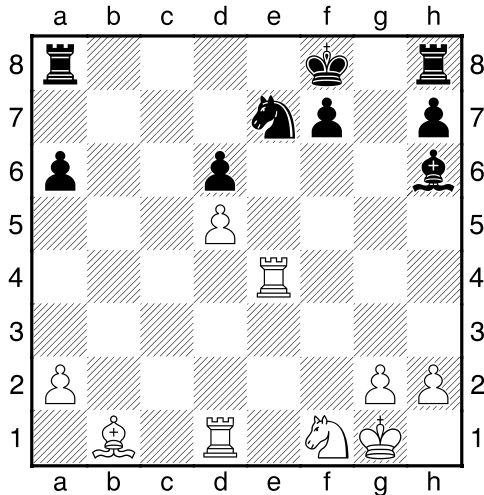
**23...Qg6 24.Qh3 Bg5 25.Nf1**

White tucks away his Knight but it is headed toward g3 where it strikes at e4, f5 and h5 -- all critical squares.

**25...Qh6**

Black has to let the Pawn plus go, and rightly decides that an endgame offers more survival chances than the middle game with Queens on the board. After 25....exf3 26. Bxf5 Qf6 27. Qxf3 00 28. Ng3 Nxf5 29. Nxf5 Black's kingside offers White too many tactical chances.

**26.Qxh6 Bxh6 27.fxe4 fxe4 28.Rxe4 Kf8**



White has advantages here that even a player like Everitt will find impossible to overcome: the better Pawn structure, the safer King, the more active pieces. Still, Black nearly makes a fight of it.

**29.Ng3 Bg5 30.Nh5 Ng6 31.Rb4 Re8 32.Kh1**

White keeps his King safe, but it would appear that 32. h3 would do the same job more economically.

**32...Ne5 33.Bc2 a5 34.Rb7 h6 35.Ba4 Rd8 36.h3**

White could also play to keep Black's other Rook passive after 36. Rf1 Rg8 37. Bc2. Instead Abe evolves a deep plan of coordinating an attack with all four pieces against the Black King.

**36...Rg8 37.Rdb1!? Be7 38.Nf4 Rg5 39.g4 Bf6 40.Bc2 Nd7 41.Nh5**

White passes up the strong 41. Ne6+! In order to keep the stranglehold going.

The d-Pawn is expendable as its disappearance allows yet another White piece to focus on f7.

**41...Bc3 42.Rf1 Re5 43.Ng3 f6**

After 43...Re1 44. Rxe1 Bxe1 45. Nf5 the Black Pawns begin to disappear.

**44.Rc7 Bd4 45.Rb1**

White remains true to his plan: Rbb7 is becoming a threat. Black sees no other choice now but to take the d-Pawn.

**45...Rxd5 46.Nf5 Bb6**

After which a small combination leads to a dominant endgame for White.

**47.Rxd7! Rxd7 48.Rxb6 Rd8 49.Rb7**

Now working with the idea of Bb3 followed by mating threats against the Black King. Black in desperation seeks an endgame of down a piece, but that endgame presents no problem for White.

**49...Rc8!? 50.Ne7 Rxc2 51.Nxd5 Rxa2 52.Ra7 a4 53.Nxf6 a3 54.Kg1 Rb2**

After 54...Ra1+ 52. Kg2 a2 53. h4 d5 53. g5 hxg5 54. d4 g6 it will be mate soon.

**55.Rxa3 1-0**

## JULY RESULTS

### WALTER MUIR

William Evans	07W22	5 ½-½
Anthony Ragan	07W17	5-1
Patrick Walsh	08W20	5-1
Richard Crago	08W03	5 ½-1 ½
Robert Beavan	07W50	6-0
Michael Burrus	08W11	6-0

### JOHN COLLINS

William Perry	06C20	6-0
Dan Dalthorp	07C29	6-0
Tim McGill	07C36	6-0

### TROPHY QUAD

Don Dostal	06Q09	5-1
------------	-------	-----

### THE PLAYERS HAVE SPOKEN!

Last month's survey questions brought forth some very clear-cut answers from the readership about the use of computers in USCF CC play. Some of the answers needed interpretation, but here are your opinions. Should computers be legalized in USCF play? By over a 2 to 1 margin (20-8) the answer was no, with half a dozen undecided. Should computers be allowed in the Absolute? the score was 5 yes, two no, and 3 indecisive of those involved.

The vote on whether the webserver events should be expanded had one negative vote, some abstentions, and eight positive votes.

It is very clear to me that the majority of the membership does not want computer play at this time. I will not bring it up again for five more years, barring unforeseen events.

## 6<sup>TH</sup> NORTH ATLANTIC TEAM TOURNAMENT STARTED

On June 20, the 6<sup>th</sup> North Atlantic Team Tournament started. The USA team consists of Board 1: SIM Jerry Weisskohl, Board 2: IM William Boucher; Board 3: SIM Michael Millstone; Board 4: Lawrence Coplin; Board 5: IM Wesley Brandhorst; Board 6: IM Robert Rizzo; Board 7: Team Captain IM Kristo Miettinen, and Board 8: Gary Walters. The US team will face teams from Spain (2), Portugal, France, England, Ireland, Scotland, Norway, Canada, and Iceland. Go strong, guys!

### LIVE CC MATCH ON ICCF

World Champions Gert Timmerman and Mikhail Umansky are conducting a live cc match on [www.iccf-webchess.com](http://www.iccf-webchess.com) This will be a thematic Nimzoindian match with a 5000 Euro prize fund, 10 moves in 50 days, and no delay for the observers.

### 11th NORTH AMERICAN INVITATIONAL STARTS

The 11th NAICCC started 1 July as a server event. Fifteen players from Mexico, the US and Canada will be participating. The players are, from Mexico: IM Clemente Guizar (2352); from Canada, Wayne Hynes (2452) IM Eugen Valer Demian (2420) Richard Labonte (2399) IM Serge Maurer (2366) Al Fichaud (2364) Pino Verde (2311); from the USA: SIM Ken Reinhart (2496) IM Keith Rodriguez (2435) IM David Myers (2416) Grayling Hill (2397) IM Corky Schakel (2325) IM Kristo Miettinen (2297) Randall Andrews (2200) and Abe Wilson (2200).

## OBITUARY

H. W. Gustafson, of San Dimas, CA, a long-time cc player (born 5 July 1927) has died. He was of Expert strength and played in a number of Golden Knights. He has bequeathed a sum of money to the USCF and some of it has been earmarked to establish a correspondence chess server. Thank you, H.W.!

### SLAV DEFENSE (D17)

**White: H. W. Gustafson (1915)**

**Black: Alex Dunne (2210)**

**1977 Golden Knights quarterfinals**

1.d4 d5 2.c4 c6 3.Nf3 Nf6 4.Nc3 dxc4  
5.a4 Bf5 6.Ne5 Nbd7 7.Nxc4 Qc7 8.g3  
e5 9.dxe5 Nxe5 10.Bf4 Nfd7 11.Bg2  
Rd8 12.Qc1 Bc5 13.Bxe5 Nxe5 14.Qf4  
Bd4 15.0-0 Be6 16.Nxe5 Qxe5 17.Qxe5  
Bxe5 18.Rfd1 Ke7 19.Rd3 Rxd3  
20.exd3 f5 21.Ne2 Rd8 22.f4 Bf6  
23.Rd1 a5 24.Kf2 Bb3 25.Re1 Kf7  
26.Ke3 Bxa4 27.Nc3 Bxc3 28.bxc3  
Re8+ 29.Kd2 Rxe1 30.Kxe1 Bb3 31.Bf3  
a4 32.Kd2 a3 33.Kc1 Ke6 34.d4 Kd6  
35.Be2 Kd5 36.Bd3 g6 37.Kb1 b5  
38.Ka1 Bc4 39.Bc2 Be2 40.Bb3+ Ke4  
41.Ka2 Kd3 42.Kxa3 Kxc3 43.d5 cxd5  
44.Bxd5 Bc4 0-1

## CLASSIFIED ADS

**LEARN CHESS BY MAIL !** Lessons given by mail, telephone, ICC – many different ways. I specialize in players rated 800-2100 who would like to improve their game. Contact me for information. Alex Dunne, 324 West Lockhart St., Sayre, PA 18840 or [chesskinetics@stny.rr.com](mailto:chesskinetics@stny.rr.com)

## “CHESS BY MAIL” VIDEO

Fans of Sylvester Stallone’s Rocky and chess by mail might enjoy this (mediocre) video entitled “Chess by Mail” on YouTube at <http://www.youtube.com/watch?v=jUohamvYAv0>

A sharp Dragon with some interesting twists mark this Dan Dalthorp win.

### SICILIAN DEFENSE (B78)

**White: David Powell (1807)**

**Black: Dan Dalthorp**

**John Collins 2007**

1.e4 c5 2.Nf3 d6 3.d4 cxd4 4.Nxd4 Nf6  
5.Nc3 g6 6.Be3 Bg7 7.f3 Nc6 8.Qd2 0-0  
9.Bc4 Bd7 10.0-0-0 Rc8 11.Bb3 Ne5  
12.h4 h5 13.Kb1 Nc4 14.Bxc4 Rxc4  
15.Nb3 Qc7 16.Bd4 Bc6 17.Qe2 b5  
18.e5 Nd5 19.Nxd5 Bxd5 20.exd6 Qxd6  
21.Bxg7 Kxg7 22.Rd3 Ra4 23.Qd2 e6  
24.Rd4 Qe5 25.Re1 Qf6 26.Rxa4 bxa4  
27.Nc5 a3 28.Qc3 Qxc3 29.bxc3 Rc8  
30.Ne4 Rb8+ 31.Ka1 Rb2 32.Re2  
Rxa2+ 33.Kb1 Rb2+ 34.Ka1 Rb6  
35.Nd2 Rb2 36.c4 Rxc2 37.cxd5 exd5  
38.g4 f5 39.gxh5 gxh5 40.Kb1 a2+  
41.Ka1 d4 42.f4 d3 43.Re5 Rc1+  
44.Kxa2 Rc2+ 45.Kb3 Rxd2 46.Kc3  
Ra2 47.Kxd3 Kf6 48.Re4 0-1

**Quote:** "J.S.D. Hopkins of Durango, Col., was one of the contestants in Section 6. He had already won two of his games and had sent replies to the other two, when he was taken suddenly ill and passed away. From data which I obtained I found that the resignation of one of the remaining contestants reached Durango after his death, while another actually resigned to him after he had passed to the great beyond." -- from American Chess Bulletin May/June 1915

Patrick Walsh of Rochester, NY, is a blind player. A computer program reads his email and talks to him. Patrick sent in his best game from the 08W20 Walter Muir Tournament. Normally, he avoids highly complex and tactical situations, but in this case the blind player sees more than his sighted opponent.

#### **QUEEN'S GAMBITDECLINED D44)**

**White: Patrick Walsh (1135)**

**Black: Tom Becker (914)**

**Walter Muir 2008**

1.d4 d5 2.c4 e6 3.Nc3 Nf6 4.Nf3 dxc4  
5.Bg5 c6 6.e4 b5 7.e5 h6 8.Bh4 g5  
9.Nxg5 hxg5 10.Bxg5 Nbd7 11.exf6  
Bb7 12.g3 c5 13.d5 Bh6 14.Bxh6 Rxh6  
15.Qd2 Qxf6 16.0-0-0 Kf8 17.h4 Nb6  
18.g4 Nxd5 19.g5 Qg6 20.Nxb5 Nb4  
21.Nc3 Bxh1 22.gxh6 Bf3 23.Re1 Bd5  
24.Re3 Qg1 25.h7 Qg7 26.a3 a5  
27.Nxd5 Nxd5 28.Bxc4 Ne7 29.Bd3 1-0

White's Knight should be in the movies  
it is so much the star of this game.

#### **BENONI (E10)**

**White: Gary Adams (2301)**

**Black: Stanley Klein (1958)**

**2000 Golden Knights Final**

1.d4 Nf6 2.c4 e6 3.Nf3 c5 4.d5 b5  
5.Bg5 Qa5+ 6.Qd2 Qxd2+ 7.Nbxd2  
bxc4 8.Bxf6 gxf6 9.e4 Bb7 10.Bxc4 Na6  
11.0-0 Nc7 12.Rad1 d6 13.Nb1 Ke7  
14.Nc3 Bh6 15.Rd3 Bf4 16.g3 Be5  
17.Nxe5 fxe5 18.f4 exf4 19.Rxf4 e5  
20.Rf2 Raf8 21.Na4 Ba6 22.Bxa6 Nxa6  
23.Rdf3 Nc7 24.Nc3 Ne8 25.Nb5 a6  
26.Na7 f6 27.Nc6+ Kd7 28.b4 cxb4  
29.Nb8+ Kc8 30.Nxa6 Rf7 31.Rc2+  
Kb7 32.Nxb4 Nc7 33.Nc6 Ra8 34.Rb2+  
1-0

This game is exciting ! A sharp  
opening, a Queen sacrifice, a King hunt,  
and fun !

#### **SICILIAN DEFENSE ()**

**White: David Myers (2320)**

**Black: Arthur Feuerstein (2004)**

**1st WS USCCC 2005**

1.e4 c5 2.Nf3 e6 3.d4 cxd4 4.Nxd4 a6  
5.Nc3 b5 6.Bd3 b4 7.Na4 Bb7 8.0-0  
Qc7 9.Re1 Nf6 10.e5 Nd5 11.Be4 g6  
12.c4 bxc3 13.bxc3 Ra7 14.Rb1 d6  
15.Nxe6 fxe6 16.Bxd5 Bxd5 17.Qxd5  
exd5 18.exd6+ Kd7 19.dxc7 Kxc7  
20.Re8 Nc6 21.Nb6 Ne7 22.Bf4+ Kc6  
23.Rd8 Bg7 24.Rd6+ Kc5 25.Na4+ Kc4  
26.Rb4+ Kd3 27.Re6 d4 28.Nb2+ Kxc3  
29.Rc4+ Kxb2 30.Re2+ 1-0

Nimzovich: Thou shalt not shilly-shally.  
White's problem in this game is too  
much shillying plus an excess of  
shallying.

#### **ENGLISH OPENING (D11)**

**White: Tom Yake (1817)**

**Black: Daniel Waite (2097)**

**2007 Electronic Knights**

1.c4 c6 2.b3 d5 3.Bb2 Nf6 4.g3 Bg4  
5.Bg2 e6 6.Nf3 Nbd7 7.0-0 Bd6 8.d4 0-0  
9.Nc3 h6 10.cxd5 exd5 11.a3 Re8  
12.Re1 Qe7 13.Nd2 Rad8 14.Qc2 Nf8  
15.b4 Ne6 16.Nb3 Ng5 17.Nc5 Nh3+  
18.Kf1 Nxf2 19.Kxf2 Qe3+ 20.Kf1  
Bxg3 21.hxg3 Nh5 22.Bf3 Bh3+ 0-1