

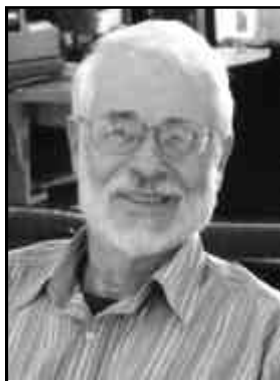
Check is in the Mail

by FIDE Master Alex Dunne



Sleep on it!

Wesley T. Brandhorst, Ted to his friends, was born May 9, 1933. He grew up on the West Coast where beach volleyball was a youthful passion. After graduation *cum laude* from the



Wesley T. Brandhorst

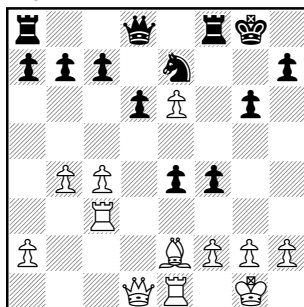
University of Berkeley, he served as Assistant Director of the NASA Scientific and Technical Information Facility, and later as Director of Educational Resources Information Center, sponsored by the U.S. Department of Education. Ted retired in 2000 to Florida to play tennis, golf, and chess. He ventured slowly into correspondence play, starting in 1975, and with steady improvement, occasionally qualified for the U.S. Championships or the USCF Absolute. Playing on U.S. teams in international play, Ted was awarded the ICCM title in 2003. A conservative player, he prefers the calculable beauties of the endgame to the imponderable complexities of the opening and middlegame. Ted admits that he is a bit lazy when it comes to opening play. He is generally happy if he can go into a middle game with an equal position. He recommends never responding the same day you receive a postcard. Always sleep on it at least one day. The more complex the position, the longer you should mull over it to avoid doing something rash or out of impatience. The mind is a funny thing and may be working on the problem even when you are not conscious of it.

GAME OF THE MONTH

The knights do a lot of work in this game, only to be swatted down by bishops that hardly seem to do anything else.

KING'S INDIAN DEFENSE [E97]
W: IM Ted Brandhorst (2412)
B: Joseph Shipman (2312)
Absolute Championship 2001

1 d4 Nf6 2 c4 g6 3 Nc3 Bg7 4 e4 00
5 Nf3 d6 6 Be2 e5 7 0-0 Nc6 8 d5 Ne7
9 b4 The Bayonet Variation has continued to score well for White.
9...Nh5 10 Re1 f5 11 Ng5 Nf4 12 Bxf4
exf4 13 Rc1 Bf6 Unnecessarily weakening the kingside is 13...h6.
14 Ne6 Bxe6 15 dxe6 Bxc3 16 Rxc3
fxe4 (diagram)



after 16...fxe4

Though temporarily a pawn ahead, the material cannot be held and the e6-pawn is a problem.

17 Bf1 e3 18 fxe3 f3?! Shipman plays a novelty, but it is a suspect one. Previously 18 fxe3 was played with results favoring White, as in Kramnik-Shirov, Tilburg 1997.

19 gxf3 Nf5 20 c5 d5? Better was 20...Qf6. Shipman has a tactical shot in mind, but he has underestimated the strength of the e6-pawn.

21 e4 d4 22 exf5! Breaking Black's back—now the win is clear.

22...Qg5+ 23 Kh1 dxc3 24 e7 Rfe8
25 Qd4 1-0

- Correction from the May issue. The fighting draw was played by White: SM Dan Fleetwood (2547) vs. Stephan Busemann. White's 25th move may be of significant theoretical interest, possibly rehabilitating a discredited line.

- For anagram fans, "The Check Is In the Mail" anagrammed is: Claim "Heck, I sent it (heh)."

- Roald Berthelsen (Taby, Sweden) reports that in the Danish OTB Championship of 1930, A. Desler and N. Lie finished equal second. The organizers decided to break the tie with two games of correspondence chess (won by N. Lie 1½-½). Has any similar arrangement occurred in other OTB tournaments?

- In the following game, Black's pieces from Move 2 on just seem to have more activity than White's.

It must be IMagic.

CHIGORIN DEFENSE [D07]
W: Angel de Los Santos Serrano (2338)
B: IM William Boucher (2445)
*V North American Team Tournament,
Board 5, 2001*

1 d4 d5 2 c4 Nc6 3 cxd5 Qxd5 4 e3
e5 5 Nc3 Bb4 6 Bd2 Bxc3 7 bxc3 Qd6
8 Bd3 Nge7 9 Ne2 0-0 10 0-0 b6 11 a4
f5 12 f3 Qf6 13 f4 exd4 14 exd4 Be6
15 Qc2 Rad8 16 Be3 Qf7 17 Rfe1 Na5
18 Ng3 Bc4 19 Bc1 Rfe8 20 Ba3 g6
21 Bxe7 Rxe7 22 Rxe7 Qxe7 23 Bxc4+
Nxc4 24 Qd3 Nd6 25 Rd1 a5 26 Rc1
Qd7 27 Qc2 Qe6 28 Nf1 Nc4 29 Rd1
Re8 30 Qa2 Nd6 31 Qxe6+ Rxe6 32
Nd2 Re3 33 Rc1 Re2 34 Rd1 Ne4 35
Nxe4 fxe4 36 Kf1 Ra2 37 Re1 Rxa4
38 Rxe4 Kf7 39 g3 Ra3 40 Re3 Ra2
41 c4 Rc2 0-1

- The prolific chess author Fred Reinfeld played a mean game of chess. Here is an example of his play by post.

VIENNA GAME [C29]
W: Fred Reinfeld
B: S. Thompson
North American Championship 1927

1 e4 e5 2 Nc3 Nf6 3 f4 d5 4 fxe5
Nxe4 5 Qf3 f5 6 d3 Nxc3 7 bxc3 d4
8 Qg3 Nc6 9 Be2 Be6 10 c4 Bb4+
11 Kd1 Qd7 12 Rb1 Rb8 13 Bf3 0-0
14 Ne2 Bc5 15 Nf4 Ne7 16 h4 b5 17
cxb5 Bxa2 18 Nh5 Ng6 19 Ra1 Be6
20 Bc6 Qf7 21 Bf4 Bd5 22 Nf6+ gxf6
23 h5 Bxc6 24 bxc6 Rb6 25 e6 Qg7 26
hxg6 Qxg6 27 Qf3 Qg4 28 Qxg4+ fxg4
29 Rh5 Rxc6 30 Ra5 Bb6 31 Rag5+
Kh8 32 Rd5 Rxe6 33 Rd7 Rfe8 34
Rhxh7+ Kg8 35 Kc1 Ba5 36 Rdg7+
Kf8 37 Bh6 Re1+ 38 Kb2 Bc3+ 39 Kb3
Rb1+ 40 Kc4 Rb4+ 41 Kc5 Re5+ 42
Kc6 Rb6+ 43 Kd7 1-0

- Bruce Gronenthal has been away from postal chess for 25 years, but he shows little signs of rust in the following game.

KING'S KNIGHT OPENING [A04]
W: Wallace Norin (2061)
B: Bruce Gronenthal (1570)
2003 Golden Knights

1 Nf3 b6 2 g3 Bb7 3 Bg2 Nf6 4 c4 e5
5 d3 d6 6 Nc3 Nbd7 7 e4 Be7 8 0-0 c6
9 Re1 Nf8 10 d4 Qc7 11 b3 Ng6 12 d5
cxd5 13 exd5 0-0 14 Bb2 a6 15 Rc1
Rad8 16 Qe2 Nd7 17 Ne4 Nc5 18 Nfd2
f5 19 Nxc5 bxc5 20 Nf3 Bc8 21 Bh3
Rde8 22 Red1 Bf6 23 Qc2 f4 24 Bxc8
Qxc8 25 Kg2 e4 26 Nd2 f3+ 27 Kh1
Qh3 28 Rg1 Bxb2 29 Qxb2 e3 30 fxe3
Rxe3 31 Nf1 Re2 32 Rd2 Qg2+ 33
Rxc2 fxg2+ 34 Kg1 gxf1(R)#

CORRESPONDENCE CHESS TOURNAMENT UPDATES FOR JUNE 2004

CONGRATULATIONS!

CANDIDATE MASTER CERTIFICATE WINNER

Michael J. Hehir 2009
Clark Haywood 2016

TROPHY QUAD WINNERS

Paul B. Ott	01QB3	4-2 co-winner
Raymond C. Grinsteiner	01QB3	4-2 co-winner
Jason D. Florin	01QC4	5-1
Michael Potter	01QC4	5-1
Kenneth North	01QD5	5-1
Everett R. Edwards	01QC7	5-1
James Rhodes	01QC7	5-1
Ethan O. Civan	01QB8	4½-1½
Stephen J. Hrabovsky	01QC9	4-2 co-winner
John C. Conway	01QC9	4-2 co-winner
Michael J. Donnelly	01QCD24	4½-1½
Raymond C. Grinsteiner	02QB11	5½-½
Peter St. Louis	02QCD01	5-1

JOHN W. COLLINS MEMORIAL CLASS TOURNAMENT WINNERS

Dale Royer	02CAB53	4-2
Philip A. Kelsey	02CB69	5-1
Tim McGill	01CAB76	3½-2½
Robert A. Eisthen	01CAB76	3½-2½
Ron E. Hall	01CA77	4-2
Louis Gazen	01CC86	6-0

VICTOR PALCIAUSKAS PRIZE TOURNAMENT WINNERS

Eugene H. Bedard	01UAB5	5-1
Michael Marshall	01UCD10	5½-½
Z.L. King	03UB2	5½-½

SWIFT QUAD WINNERS

Thomas Peabody	03SQ32	6-0
Victor Ying	03SQ19	6-0
Gregory Wilder	01SQ4	5-1

HANS BERLINER WINNERS

John Moriarty	01D01	7-1
Hinton Williams	01D04	7-1

CORRESPONDENCE CHESS PLAYERS

You are invited to send me your comments, questions and correspondence games (with or without annotation). Because of the volume of mail, submissions cannot be returned, and personal replies are not possible. Send letters to: Alex Dunne, *Chess Life*, 3068 US Route 9W, Suite 100, New Windsor, NY 12553 or e-mail: alex.dunne@cqservices.com

POSTAL BEAUTY CONTEST



Is it right that beauty is so often only its own reward? Surely not! And thanks to the generosity of Dr. Ronald Hames, the scales of justice have become more evenly balanced between how one wins and the hard fact of victory.

For now in *Chess Life* the players who conduct scintillating games will receive the Hames Correspondence Game of the Year Awards. Resident postal editor Alex Dunne is the judge of a contest with prizes of \$100 for the best game by a master and \$100

for the best game by a non-master to appear in *Check* is in the Mail during a given year. What better reason, then, to send your postal brilliancies to Alex Dunne?

CHECK OUT USCF'S CORRESPONDENCE CHESS RATED EVENTS

USCF's 57th ANNUAL

2004 Open Correspondence Chess Golden Knights Championship \$1,500 First Prize

(plus title of USCF's Golden Knights Champion and plaque)

• 2nd place \$800 • 3rd place \$600 • 4th place \$400 • 5th place \$200 • 6th thru 10th place \$100 each. **Entry fee: \$25.**

The entry deadline is November 30, 2004.

These USCF Correspondence Chess events are rated and open to all USCF members who reside on the North American continent, islands, or Hawaii, as well as those USCF members with an APO or FPO address. USCF members who reside outside of the North American continent are welcome to participate in e-mail events. Your USCF membership must remain current for the duration of the event, and entry fees must be paid in U.S. dollars. Those new to USCF Correspondence Chess, please estimate your strength: **Class A:** 1800-1999 (very strong); **Class B:** 1600-1799 (strong); **Class C:** 1400-1599 (intermediate); **Class D:** 1399 and below (beginner level). **Note:** Prize fund guaranteed (based on 400 entries) and will be increased or decreased proportionately per number of entries assigned.

CORRESPONDENCE CHESS MATCHES (TWO PLAYERS)

\$5 entry fee per person with two, four or six game options.

WIN A CORRESPONDENCE CHESS TROPHY

Four-player, double round-robin with class-level pairings. 1st place winner receives a trophy. **Entry fee: \$10.**

VICTOR PALCIAUSKAS PRIZE TOURNAMENTS

Seven-player class-level pairings, one game with each of six opponents. Players must have a USCF CC rating to enter. 1st-place winner receives \$130 cash prize and a certificate signed by Victor Palciauskas. **Entry fee: \$25.**

JOHN W. COLLINS MEMORIAL CLASS TOURNAMENTS

Four-player, double round-robin with class-level pairings (unrateds welcome). 1st-place winner receives a John W. Collins certificate. **Entry fee: \$7.**

E-MAIL RATED EVENTS (NEED E-MAIL ACCESS):

LIGHTNING MATCH Two players with two, four or six game option. **Entry fee \$5 per person.**

Swift Quads

Four-player, double round-robin format. 1st-place prize merchandise credit of \$30. **Entry fee: \$10.**

Express Tournament

Seven-player events, one game with each of six opponents. Prizes: 1st place \$30 merchandise credit, 2nd place \$20 credit. **Entry fee: \$15.**

Please circle event(s) selected.



U.S. Chess Federation
www.uschess.org



USCF's 1st ANNUAL

2004 E-mail Correspondence Chess Electronic Knights Championship

(Seven-player sections, one game with each of six opponents.)

\$1,500 First Prize

(plus title of USCF's Electronic Knights Champion and plaque)

• 2nd place \$800 • 3rd place \$600 • 4th place \$400 • 5th place \$200 • 6th thru 10th place \$100 each. **Entry fee: \$25.**

The entry deadline is November 30, 2004.

These USCF Correspondence Chess events are rated and open to all USCF members with e-mail access. Your USCF membership must remain current for the duration of the event, and entry fees must be paid in U.S. dollars. Maximum number of tournament entries allowed for the year for each player is ten.

Note: Prize fund guaranteed (based on 400 entries) and will be increased or decreased proportionately per number of entries assigned.

NOTE: Except for Lightning Matches, Swift Quads and Express Tournaments, players will use post office mail, unless opponents agree to use e-mail.

TO ENTER: 800-388-KING (5464) FAX 845-561-CHES (2437)

Name _____
USCF ID# _____
Address _____ City _____
State _____ ZIP _____ Phone _____
E-mail _____
Credit card # (VISA, MC, Discover, AMEX) _____ Exp. date _____
If using VISA, need V-code _____
Check here if you do not wish to have an opponent who is incarcerated. Sending a check? Make it payable to U.S. Chess and mail to: 3068 US Rt. 9W, Suite 100, New Windsor, NY 12553