



John C. Timm — Grandmaster! John Timm received the ICCF Grandmaster title at the Mumbai Congress in India. It was an award well deserved. John has had a solid record in postal play. He tied for first in the 1986 Golden Knights. In 1997 he was awarded the ICCM title. Timm held down fifth board for the U.S. in the 13th Olympiad, a team that qualified for the finals. Timm's 10½-1½ score was a tremendous impetus to the team, and in the final months of play, Timm acted as a second captain when one was much needed. He then qualified for the XIX World Championship finals where he made his first GM norm. In 2001 Timm earned the SIM title. He earned his second GM norm in the Itzhak Veinger Memorial. Hail to you, John C. Timm — Grandmaster!

GAME OF THE MONTH

When White willingly weakens his kingside, John Timm finds ways to encourage further weakening until there is no defense.

SICILIAN DEFENSE [B22]

W: IM Karl-Heinz Kraft (2630)

B: GM John Timm (2537)

XIX World Championship 1999

1 e4 c5 2 c3 Nf6 3 e5 Nd5 4 Nf3 e6 5 d4 cxd4 6 cxd4 b6 7 Bg5 Be7 8 Bxe7 Qxe7 9 Nbd2 d6 10 Bc4 0-0

CORRESPONDENCE CHESS TOURNAMENT UPDATES FOR APRIL 2005 CONGRATULATIONS!

CANDIDATE MASTER

Todd Brigham 2005

TOURNAMENT WINNERS

TROPHY QUADS

Michael Marshall	03QMA30	6-0
Gilbert Chavez, Jr.	03QC3	5½-1½
Richard Zelinski	03QC34	6-0

JOHN COLLINS CLASS

Rolando Rodriguez	03CC48	5-1
Michael Zielinski	03CC48	5-1
Brian Flowers	03CM43	6-0

11 0-0 Bb7 12 Rc1 Nd7 13 exd6 Qxd6 14 Ne4 Qf4 15 Re1 Rad8 16 g3

The first small step toward the abyss: White drives away the black queen but leaves a permanent weakness.

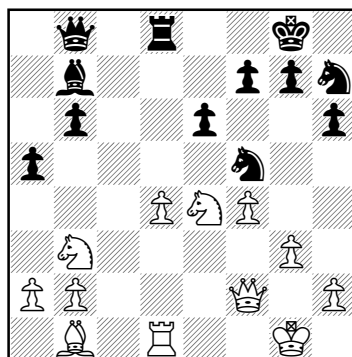
16 ... Qb8 17 Bd3 Rc8 18 Qe2 h6 19 Bb1 Rfd8 20 Nfd2 Nf8 21 f3?

To lessen the effect of the bishop on the long diagonal, but after this White is given no chance to recover.

21 ... Ne7!

Black will attack d4 to force White to defend it. With passive pieces the white kingside becomes weaker.

22 Qf2 Rxc1 23 Rxc1 Nf5 24 Nb3 a5 25 Rd1 Nh7 26 f4



after 26 f4

To prevent ... e5, but now the white squares are vulnerable to Black's pieces.

26 ... Qc7 27 Rc1 Qd7 28 d5!?

White plays to keep the white squares, but the damage has been done.

28 ... Bxd5 29 Rd1 Qc7 30 Rc1 Bxe4 31 Bxe4 Qd6 32 Bc6 Nf6 33 Bb5 Qb4 34 Bf1 a4 35 Rc4 Qd6 36 Rxa4 b5 37 Ra5 Ng4 38 Qe2 Qb6+ 39 Kh1 Nf3, White resigns.

“Recently, I began playing correspondence chess, and in one game chose a move I didn’t believe in, only because Fritz insisted that it was the best option. I’m still suffering from its consequences.” —IM Alexander Mikhalevsky.

•The 2000 Absolute has produced co-champions — Richard Title, a player-coach in the Boston area and Jan Koziol of North Riverside, Illinois. Both finished with a 9-3 score. Richard enjoys the more leisurely pace of cor-

• John Watson would like this game — Black plays in anti-Nimzovich style expanding on both wings.

KING'S BISHOP OPENING [A00]

W: Kurt Ehr Gott (2369)

B: Richard Title (2429)

USCF 2000 Absolute

1 e4 e5 2 Bc4 Nf6 3 d3 Be7 4 Nc3 0-0 5 f4 exf4 6 e5 Ne8 7 Bxf4 d6 8 d4 Nc6 9 Nf3 g5 10 Bg3 g4 11 d5 Na5 12 Nd2 dxe5 13 Bxe5 c6 14 Bb3 b5 15 Bg3 b4 16 Ne2 Bc5 17 dxc6 Qe7 18 Rf1 Ba6 19 Rf4 Nf6 20 Bh4 Rfe8 21 Bxf6 Qxe2+ 22 Qxe2 Rxe2+ 23 Kd1 Rxb2 24 Bxf7+ Kxf7 25 Bd4+ Ke6 26 Bxc5 Rd8 27 Be3 Rxb2 28 Re4+ Kd5 29 c4+ Nxc4, White resigns.

• Jan Koziol declined to send any biographical information. He may prefer to let games like this light his name. White’s maneuvering in this game is very impressive.

FRENCH DEFENSE [C16]

W: Jan Koziol (2343)

B: J. Franklin Campbell (2139)

14th USCCC 1998

1 e4 e6 2 d4 d5 3 Nc3 Bb4 4 e5 b6 5 Bb5+ c6 6 Qg4 Bf8 7 Be2 Ba6 8 Bg5 Qc7 9 Nf3 Bxe2 10 Nxe2 c5 11 0-0 Nc6 12 Rfe1 h6 13 Bh4 Nge7 14 Bxe7 Nxe7 15 Rac1 c4 16 h4 Nf5 17 Ng3 Nxe3 18 Qxe3 c3 19 b3 Rg8 20 a4 Bb4 21 Rb1 0-0-0 22 Re3 Kb7 23 Rd1 Rc8 24 Ne1 g5 25 Nd3 Ba3 26 Rf3 Qe7 27 h5 Rc7 28 Nf4 Rgc8 29 Ne2 Bb2 30 Rf6 Qf8 31 Qd3 Qg7 32 Rf1 Ba3 33 a5 Be7 34 axb6 Kxb6 35 Ra1 a5 36 Rf3 Bb4 37 g4 Rf8 38 Nc1 Rfc8 39 Ra4 Be7 40 Na2 f6 41 exf6 Bxf6 42 Qe2 Rc6 43 Nb4 axb4 44 Ra6+ Kc7 45 Rxc6+, Black resigns.

•Mr. Bean credits *The System* by Hans Berliner for victory in this game and a large increase in his rating.

TWO KNIGHTS' DEFENSE [C57]

W: R. Seldon

B: C. Bean

E-mail, 2005

1 e4 e5 2 Nf3 Nc6 3 Bc4 Nf6 4 Ng5 d5 5 exd5 Nd4 6 c3 b5 7 Bf1 Nxd5 8 Ne4 Qh4 9 Ng3 Bg4 10 f3 e4 11 cxd4 Bd6 12 Qe2 Be6 13 fxe4 Nb4 14 Na3 0-0-0 15 e5 Qxd4 16 exd6 Bg4 17 d7+ Qxd7 18 Qe3 Bb8 19 Ne4 Qd5 20 d3 f7 21 b2

Serving the North American Correspondence Chess Community since 1909.

P.O. Box 257, Galesburg, IL 61402-0157

Website: www.chessbymail.com E-mail: ccla@insightbb.com

CCLA's 95TH ANNIVERSARY JUBILEE E-MAIL CHAMPIONSHIP
Open all year Entry Fee \$10.00 Rd. 1 and Qual. Rd. 2

Many other events available, both e-mail and postal.
Tournament entrants must belong to CCLA during play.
For further information, contact CCLA's
website, e-mail or postal addresses.



have become more evenly balanced between how one wins and the hard fact of victory. For now in *Chess Life* the players who conduct scintillating games will receive the Hames Correspondence Game of the Year Awards. Resident postal editor Alex Dunne is the judge of a contest with prizes of \$100 for the best game by a master and \$100 for the best game by a non-master to appear in Check is in the Mail during a given year. What better reason, then, to send your postal brilliancies to Alex Dunne?

You are invited to send me your comments, questions and correspondence games (with or without annotation). Because of the volume of mail, submissions cannot be returned, and personal replies are not possible.

For Correspondence Chess game results, time complaints, vacation notices, etc., mail them to: Alex Dunne, PO Box 367, Sayre, PA 18840 or e-mail: alex.dunne@cqservices.com

For Correspondence Chess tournament entries, these **MUST** be mailed to: Joan DuBois, USCF, PO Box 3967, Crossville, TN 38557.

CHECK OUT USCF'S CORRESPONDENCE CHESS RATED EVENTS

USCF's 58th ANNUAL

2005 Open Correspondence Chess Golden Knights Championship
\$1,500 First Prize

(plus title of USCF's Golden Knights Champion and plaque)

• 2nd place \$800 • 3rd place \$600 • 4th place \$400 • 5th place \$200 • 6th thru 10th place \$100 each. **Entry fee: \$25.**

The entry deadline is November 30, 2005.

These USCF Correspondence Chess events are rated and open to all USCF members who reside on the North American continent, islands, or Hawaii, as well as those USCF members with an APO or FPO address. USCF members who reside outside of the North American continent are welcome to participate in e-mail events. Your USCF membership must remain current for the duration of the event, and entry fees must be paid in U.S. dollars. Those new to USCF Correspondence Chess, please estimate your strength: **Class A:** 1800-1999 (very strong); **Class B:** 1600-1799 (strong); **Class C:** 1400-1599 (intermediate); **Class D:** 1399 and below (beginner level). **Note:** Prize fund guaranteed (based on 400 entries) and will be increased or decreased proportionately per number of entries assigned.

CORRESPONDENCE CHESS MATCHES (TWO PLAYERS)

\$5 entry fee per person with two, four or six game options.

WIN A CORRESPONDENCE CHESS TROPHY

Four-player, double round-robin with class-level pairings. 1st place winner receives a trophy. **Entry fee: \$10.**

VICTOR PALCIAUSKAS PRIZE TOURNAMENTS

Seven-player class-level pairings, one game with each of six opponents. Players must have a USCF CC rating to enter. 1st-place winner receives \$130 cash prize and a certificate signed by Victor Palciauskas. **Entry fee: \$25.**

USCF's 2nd ANNUAL

2005 E-mail Correspondence Chess
Electronic Knights Championship
(Seven-player sections, one game with each of six opponents.)
\$1,500 First Prize

(plus title of USCF's Electronic Knights Champion and plaque)

• 2nd place \$800 • 3rd place \$600 • 4th place \$400 • 5th place \$200 • 6th thru 10th place \$100 each. **Entry fee: \$25.**

The entry deadline is November 30, 2005.

These USCF Correspondence Chess events are rated and open to all USCF members with e-mail access. Your USCF membership must remain current for the duration of the event, and entry fees must be paid in U.S. dollars. Maximum number of tournament entries allowed for the year for each player is ten.

Note: Prize fund guaranteed (based on 400 entries) and will be increased or decreased proportionately per number of entries assigned.

E-MAIL RATED EVENTS (NEED E-MAIL ACCESS):

LIGHTNING MATCH Two players with two, four or six game option. **Entry fee \$5 per person.**

Swift Quads Four-player, double round-robin format. 1st-place prize merchandise credit of \$30. **Entry fee: \$10.**

Express Tournament

Seven-player events, one game with each of six opponents.

Prizes: **1st place** \$30 merchandise credit, **2nd place** \$20 credit.

Entry fee: \$15.

NOTE: Except for Lightning Matches, Swift Quads and Express Tournaments, players will use post office mail, unless opponents agree to use e-mail.

TO ENTER: 800-903-USCF (8723) OR FAX 931-787-1200

Name _____
USCF ID# _____
Address _____ City _____
State _____ ZIP _____ Phone _____
E-mail _____
Credit card # (VISA, MC, Discover, AMEX) _____
Exp. date _____ If using VISA, need Vcode _____