



Renaissance Man

J. Franklin Campbell, known as Franklin to his friends, is a renaissance man of chess. If you chess surf the web at all, you are bound to run across this man's influence. Franklin's "The Campbell Report," started in the *APCT News Bulletin* in 1989 and moved to a website — www.correspondencechess.com/campbell in 1998, is one of the main sources for correspondence chess news. "The Campbell Report" received the 2004 Chess Journalists of America's Award for the "Best CC Web Site." Franklin has served as webmaster for APCT, CJA, ICCF Congresses, and ICCF/US (for which he received the ICCF 2003 "Friend of ICCF" Award).

Franklin believes chess provides immense pleasure and satisfaction and so he encourages people to give back to chess by finding positive ways to contribute to the chess community. He suggests being an officer in your local chess club, teaching chess in your local school chess club, setting up a website, or annotating your games for your favorite chess publication.

Franklin served as a match photographer for the 1985 Alburt-Short match. He served as a judge for the annual CJA journalist awards. He has directed tournaments for the NAPZ Zone of the ICCF. And now J. Franklin Campbell has been awarded the title of International Arbiter by the ICCF Congress at Mumbai.

Congratulations, Franklin!

GAME OF THE MONTH

Not only is Campbell multi-faceted off the chess board, he shows high carats on the board, too.

QUEEN'S GAMBIT DECLINED [D45]

W: Silviu Nenciulescu (2246)

B: J. Franklin Campbell (2139)

ICCF Webchess 2004

1 d4 Nf6 2 c4 e6 3 Nf3 d5 4 Nc3 c6 5 e3 Nbd7 6 Qc2 Bd6 7 Bd3 0-0 8 0-0 dxc4 9 Bxc4 e5 10 Rd1 exd4 11 Nxd4 Qc7

Sopko-Dutra, e-mail 2002, continued 11 ... Ne5 12 Bb3 Qe7 13 Nf5. Campbell's choice is better.

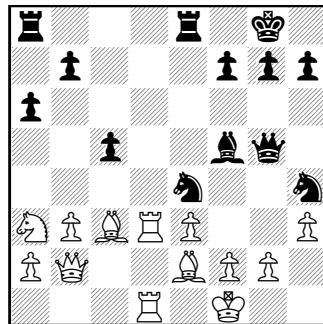
12 h3 Ne5 13 Be2 Ng6 14 b3 Qe7 15 Bb2 Re8 16 Rd2?!

White is too ambitious here. After 16 Nf5 Bxf5 17 Qxf5 Ba3 the position remains equal.

16 ... Nh4 17 Kf1 Bb4 18 Rad1 Bxc3 19 Bxc3 Ne4 20 Rd3 c5 21 Nb5 Bf5 22 Qb2 a6 23 Na3?!

White had to try 23 Nd6 Nxd6 24 Rxd6 Qe4 25 f3 with Black standing only slightly better.

23 ... Qg5



after 23 ... Qg5

The Black pieces form thunderclouds above the white king. Now White defends well, but Campbell's attack is just too strong.

24 g4 h5 25 f4 Qg6 26 Be1 hxg4 27 hxg4

There was no shelter in 27 Bxh4 gxh3 28 Bf3 Qh7!

27 ... Bxg4 28 Bxg4 Qxg4 29 Bxh4 Qxh4 30 Qg2 Ng3+ 31 Kg1 Re6 32 Qh2 Ne2+ 33 Kh1 Qg4 34 Rd8+ Re8 35 Rxa8 Ng3+ 36 Qxg3 Qxd1+ 37 Qg1 Qh5+ 38 Qh2 Qxh2+ 39 Kxh2 Rxa8

White could resign here.

40 Kg3 Re8 41 Kf3 f5 42 Nc4 Re6 43 Nd2 b5 44 e4 fxe4+ 45 Nxe4 c4 46 bxc4 bxc4, White resigns.

For those not familiar with webchess, it is the latest form of correspondence chess. Most readers are familiar with internet chess: a board appears on the screen, your chess clock begins ticking, a move is made with a mouse or keyboard, and the move appears on the screen for your opponent's turn. Webchess uses the same procedures except the clock keeps time in cc time (days, hours, minutes and seconds) you have room to write messages to your opponent, and after you make your move, a new board appears with the move on it that you must confirm. Then the move is sent to your opponent. Bookkeeping and recording errors are thus kept to

a minimum. It is the future of cc chess, and I hope the USCF will soon make it available on its website.

• "I believe that due to the opportunity to use computers, Correspondence Chess has risen to a new, higher qualitative level, but the person continues to play the main role" — Mikhail Umansky, 13th World Correspondence Champion.

• If it is said a draw is like kissing your sister, what can be said of a draw like this one?

ENGLISH OPENING

[A23]

W: Nicolau Morihama (2405)

B: John Mousessian (2443)

ICCF 2003

1 c4 e5 2 Nc3 Nf6 3 g3 c6 4 Nf3 e4 5 Nd4 Qb6 6 Nc2 d5 7 Bg2 dxc4 8 0-0 Be6 9 Nxe4 Nxe4 10 Bxe4 Nd7 11 Ne3 Nf6 12 Bf5 Bxf5 13 Nxf5 0-0-0 14 Qc2 Qb5 15 Ne3 Qh5 16 Qxc4 Bc5 17 b4 Bd4 18 Rb1 Qh3 19 f3 Rhe8 20 b5 Re5 21 Bb2 Rh5 22 Rf2 Rxb5 23 Qc2 Bb6 24 a4 Rb4 25 a5 Bxa5 26 Nc4 Bc7 27 Ra1 a6 28 d3 h5 29 Bc3 Rb5 30 Bd2 Rd7 31 Na3 Rf5 32 Rg2 h4 33 g4 Bb6+ 34 Kh1 Rxf3 35 exf3 Qxf3 36 Nc4 Bd4 37 Qd1 Qxd3 38 Rc1 Ba7 39 Nb2 Qd5 40 h3 Ne4 41 Be1 Qg5 42 Qc2 Qf4 43 Qe2 Qxc1 44 Qxe4 Qe3 45 Qxe3 Bxe3 46 Rc2 c5 47 Bc3 g6 48 Nc4 Rd3 49 Nb2 Rd6 50 Kg2 b5 51 Kf3 Bh6 52 Be5 Rc6 53 Ke4 c4 54 Kd5 Kd7 55 Rf2 f5 56 gxf5 Be3 57 Rf3 Rc5+ 58 Ke4 gxf5+ 59 Rxf5 Bc1 60 Rf7+ Ke8 61 Ra7 Rxe5+ 62 Kxe5 Bxb2+ 63 Ke4 b4 64 Rxa6 Kd7 65 Ra4 Bc3 66 Kd5 b3, draw.

• From John Hilbert's biography *Walter Penn Shipley: Philadelphia's Friend of Chess* comes this remarkable finish. On Move 38, Shipley announces mate in 22.

RUY LOPEZ

[C66]

W: Walter Penn Shipley

B: J. Hale

Globe Tourney, 1891-1894

1 e4 e5 2 Nf3 Nc6 3 Bb5 Nf6 4 Nc3 d6 5 d4 exd4 6 Nxd4 Bd7 7 0-0 Nxd4 8 Bxd7+ Qxd7 9 Qxd4 Be7 10 Rd1 0-0 11 e5 Ne8 12 Bf4 a6 13 Rd3 Rd8 14 Nd5 Kh8 15 Nxe7 Qxe7 16 Rad1 f6 17 exd6 Nxd6 18 Qb4 Rfe8 19 g3 Rc8 20 Bxd6 cxd6 21 c3 Rc5 22 Re3 Re5 23 Rxe5 fxe5 24 Qxd6 Qf7 25 Qd7 Kg8 26 Qxf7+ Kxf7 27 Rd7+ Re7 28 Rxe7+ Kxe7 29 Kg2 Ke6 30 Kf3 Kd5 31 b3 h5 32 h4 b5 33 Ke3 e4 34 Kf4 a5 35 Kg5 b4 36 c4+ Kd4

37 Kxh5 Kd3 38 c5 Ke2 White announced mate in 22. 39 c6 Kxf2 40 c7 e3 41 c8=Q e2 42 Qf5+ Kg1 43 Qe4 Kf1 44 Qf4+ Kg1 45 Qe3+ Kf1 46 Qf3+ Ke1 47 Kg4 Kd2 48 Qd5+ Kc1 49 Qc4+ Kd2 50 Qd4+ Kc1 51 Qe3+ Kd1 52 Qd3+ Kc1 53 Qxe2 a4 54 Kf3 axb3 55 axb3 Kb1 56 Kc3 g6 57 Kd3 g5 58 hxg5 Ka1 59 Kc2 Ka2 60 Qa6, mate.

Black's exchange sacrifice on c3 isn't original, just further proof of how strong this thematic sacrifice is.

SICILIAN DEFENSE (B53)

W: Norman Furse (2183)

B: Robert Fass (2136)

2004 *Electronic Knights*

1 e4 c5 2 Nf3 d6 3 d4 cxd4 4 Qxd4 a6 5 Be3 Nc6 6 Qd2 Nf6 7 Nc3 b5 8 Nd4 Bb7 9 f3 e6 10 0-0-0 Ne5 11 a3 Rc8 12 Nb3 Be7 13 Kb1

0-0 14 Qf2 Rxc3 15 bxc3 Nfd7 16 Qg3 Qc7 17 Bd4 Bf6 18 Ka2 Nb6 19 Nd2 Ned7 20 Nb1 e5 21 Be3 d5 22 Qg4 dxe4 23 fe4 Nc5 24 Bd3 Bc8 25 Qe2 Be6+ 26 Ka1 Be7 27 Bc1 Nc4 28 Bxc4 bxc4 29 Rd5 Na4 30 Nd2 Rc8 31 Qe3 Bxd5 32 exd5 Qa5 33 d6 Bxd6 34 Ne4 Bf8 35 Rf1 Nb6 36 Ka2 Rb8 37 Qf3 f6 38 Qg4 Qa4 39 Rf2 Kh8 40 Qd1 Qb5 41 Nd6 Bxd6, White resigns.

CORRESPONDENCE CHESS TOURNAMENT UPDATES FOR SEPTEMBER 2005

CONGRATULATIONS!

NEW MASTERS

SENIOR MASTER

Robert Jacobs 2405

CANDIDATE MASTERS

Shane Schultheis 2141

TOURNAMENT WINNERS

JOHN COLLINS MEMORIAL CLASS

Thomas Delehanty 04CM22 5-1
Michael Spradlin 04CB08 6-0

TROPHY QUAD

Frank Spooner, Sr. 03QCD24 6-0

E-MAIL

SWIFT QUAD

Steven Rosenthal 04SQ28 4½-1½
Guy Hadley 05SQD11 6-0

POSTAL BEAUTY CONTEST

Is it right that beauty is so often only its own reward? Surely not! And thanks to the generosity of Dr. Ronald Hames, the scales of justice have become more evenly balanced between how one wins and the hard fact of victory. For now in *Chess Life* the players who conduct scintillating games will receive the Hames Correspondence Game of the Year Awards.



Resident postal editor Alex Dunne is the judge of a contest with prizes of \$100 for the best game by a master and \$100 for the best game by a non-master to appear in *Chess Life* in the Mail during a given year. What better reason, then, to send your postal brilliancies to Alex Dunne?

You are invited to send me your comments, questions and correspondence games (with or without annotation). Because of the volume of mail, submissions cannot be returned, and personal replies are not possible.

For Correspondence Chess game results, time complaints, vacation notices, etc., mail them to: Alex Dunne, PO Box 367, Sayre, PA 18840 or e-mail: alex.dunne@cqservices.com

For Correspondence Chess tournament entries, these **MUST** be mailed to: Joan DuBois, USCF, PO Box 3967, Crossville, TN 38557.

CHECK OUT USCF'S CORRESPONDENCE CHESS RATED EVENTS

USCF's 58th ANNUAL

2005 Open Correspondence Chess Golden Knights Championship \$1,500 First Prize

(plus title of USCF's Golden Knights Champion and plaque)

• 2nd place \$800 • 3rd place \$600 • 4th place \$400 • 5th place \$200 • 6th thru 10th place \$100 each. **Entry fee: \$25.**

The entry deadline is November 30, 2005.

These USCF Correspondence Chess events are rated and open to all USCF members who reside on the North American continent, islands, or Hawaii, as well as those USCF members with an APO or FPO address. USCF members who reside outside of the North American continent are welcome to participate in e-mail events. Your USCF membership must remain current for the duration of the event, and entry fees must be paid in U.S. dollars. Those new to USCF Correspondence Chess, please estimate your strength: **Class A:** 1800-1999 (very strong); **Class B:** 1600-1799 (strong); **Class C:** 1400-1599 (intermediate); **Class D:** 1399 and below (beginner level). **Note:** Prize fund guaranteed (based on 400 entries) and will be increased or decreased proportionately per number of entries assigned.

CORRESPONDENCE CHESS MATCHES (TWO PLAYERS)

\$5 entry fee per person with two, four or six game options.

WIN A CORRESPONDENCE CHESS TROPHY

Four-player, double round-robin with class-level pairings. 1st-place winner receives a trophy. **Entry fee: \$10.**

VICTOR PALCIAUSKAS PRIZE TOURNAMENTS

Seven-player class-level pairings, one game with each of six opponents. Players must have a USCF CC rating to enter. 1st-place winner receives \$130 cash prize and a certificate signed by Victor Palciauskas. **Entry fee: \$25.**

JOHN W. COLLINS MEMORIAL CLASS TOURNAMENTS

Four-player, double round-robin with class-level pairings (unrateds welcome). 1st-place winner receives a John W. Collins certificate. **Entry fee: \$7.**

E-MAIL RATED EVENTS (NEED E-MAIL ACCESS):

LIGHTNING MATCH Two players with two, four or six game option. **Entry fee \$5 per person.**

Swift Quads Four-player, double round-robin format. 1st-place prize merchandise credit of \$30. **Entry fee: \$10.**

NEW!! Walter Muir E-Quads

Four-player, double round-robin e-mail format tournament with class-level pairings (unrateds welcome). 1st-place receives a certificate. **Entry fee: \$7.**

Express Tournament

Seven-player events, one game with each of six opponents. Prizes: 1st place \$30 merchandise credit, 2nd place \$20 credit. **Entry fee: \$15.**

USCF's 2nd ANNUAL

2005 E-mail Correspondence Chess Electronic Knights Championship

(Seven-player sections, one game with each of six opponents.)

\$1,500 First Prize

(plus title of USCF's Electronic Knights Champion and plaque)

• 2nd place \$800 • 3rd place \$600 • 4th place \$400 • 5th place \$200 • 6th thru 10th place \$100 each. **Entry fee: \$25.**

The entry deadline is November 30, 2005.

These USCF Correspondence Chess events are rated and open to all USCF members with e-mail access. Your USCF membership must remain current for the duration of the event, and entry fees must be paid in U.S. dollars.

Maximum number of tournament entries allowed for the year for each player is ten.

Note: Prize fund guaranteed (based on 400 entries) and will be increased or decreased proportionately per number of entries assigned.

Please circle event(s) selected.

NOTE: Except for Lightning Matches, Swift Quads, Walter Muir E-Quads, Electronic Knights & Express Tournaments, players will use post office mail, unless opponents agree to use e-mail.

TO ENTER: 800-903-USCF (8723) OR FAX 931-787-1200

Name _____
USCF ID# _____
Address _____ City _____
State _____ ZIP _____ Phone _____
E-mail _____
Credit card # (VISA, MC, Discover, AMEX) _____
Exp. date _____ If using VISA, need V-code _____

Check here if you do not wish to have an opponent who is incarcerated.

Make checks payable to U.S. Chess and mail to:
Joan DuBois, USCF, PO Box 3967, Crossville, TN 38557



U.S. Chess Federation
www.uschess.org