



Check is in the Mail

by FIDE Master Alex Dunne

ICCM Kristo Miettinen

Kristo Miettinen is a 40-year-old electrical engineer, married with four children. As a civilian, he designs active imaging remote sensing systems (laser and radar) and as a civil affairs officer, he manages the effect of civilians on combat operations. Kristo followed the 1972 Fischer-Spassky match as a child over the radio in Lohja, Finland. In keeping with his lifelong attraction to gambits, underdogs, the Red Sox (how do you like your Red Sox now, Kristo?) and other lost causes, he was rooting for the defending champion. He became interested in correspondence chess in 1975 at the Kaivo-puisto chess park in Helsinki. Players would bring their cc recorders to discuss their positions with anyone willing to offer an opinion. That same year he began his lifelong hobby of chess programming. It would take him six years and two more computers before he got his first chess program to run. Kristo won the 1994 Hawver Cup and tied for first in a WCCF World Championship Tournament. He won a 15-man ICCF Tournament in 1996, and for his results, Kristo received his ICCM title at the annual ICCF meeting, in Rimini, Italy, in October 2001.

GAME OF THE MONTH

The battle on the queenside cannot be any fiercer. Both sides fight on the a-, b-, and c-files with all their pieces until one side cracks.

FRENCH DEFENSE [C18]

W: IM Kristo Miettinen (2435)

B: N. Eric Pedersen (2445)

9 North American Invitational 2000

1 e4 e6 2 d4 d5 3 Nc3 Bb4 4 e5 c5 5 a3 Bxc3+ 6 bxc3 Qc7 7 Qg4 f5 8 Qg3 cxd4 9 cxd4 Ne7 10 Bd2 0-0 11 Bd3 b6 12 Ne2 Ba6 13 Nf4 Qd7 14 0-0

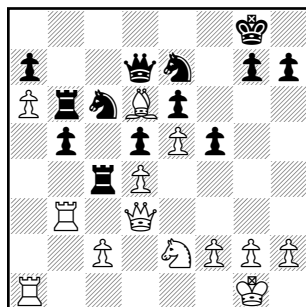
By far the most popular continuation today is 14 h4!? as in Kasparov-Short, Novgorod 1997. In theory, White should attack on the kingside and Black should attack on the queenside. Miettinen has a different idea: hand-to-hand combat on the queenside.

14...Bxd3 15 Qxd3 Rc8 16 Rab1 Rc4 17 Rb4 Rc7 18 a4 Nbc6 19 Rb3 Rac8 20 Ra1 Nd8

Black, too, is playing to win, else he

would have tried 20...Na5 21 Bxa5 bxa5 with a likely draw.

21 a5 b5 22 a6 Rc4 23 Ne2 Rb8 24 Bb4 Ndc6 25 Bd6 Rb6



after 25...Rb6

White now exchanges a passed a-pawn for domination of the b-file: static vs. dynamic advantages.

26 c3 Qc8 27 Qd1 Rxa6 28 Rxb5 Rxa1 29 Qxa1 Kf7 30 Nf4 a5 31 Nd3 a4 32 Nc5 Qa8 33 h3 Ng6 34 Kh2 Nf4 35 Rb7+ Kg8 36 Qb1 h6

White has planned a neat finish after 36...a3 37 Qb5 a2 38 Qxc6 a1(Q) 39 Qd7 and Black has no defense.

37 Qb5 Qc8 38 Rc7 Qe8 39 Qb7 Qg6 40 g3, Black resigns.

•ICCF/US has announced the US team for the finals of the 13th Olympiad. In board order with their current ICCF ratings are GM Vytautas Palciauskas (2584), GM Joseph DeMauro (2494), SM Jon Edwards (2543), SM Edward Duliba (2571), IM Christopher Sergel (2505), and IM Hisham Sunna (2515). I have the honor of being the Team Captain to this formidable group. Good skill, guys!

•The 3rd E-mail US Championship has started. This will be the first US championship played on the chess server. The chess server all but eliminated two of the biggest problems with correspondence play—now there will be greatly reduced notational problem problems and no more time issues. Interested cc'ers can go to www.iccf-webchess.com

•Senior Master Edward Duliba speaks for some of the "old guard" on the subject of international postal play: "I will never play speed chess by e-mail again. Give me a six-year game any day."

•Attention postal players in the state of Washington: Sorry, but you cannot get a personalized license plate reading "Postal" as that is on the forbidden list.

•The 1995 Golden Knights championship demonstrates the incisiveness that propelled him to the top.

SLAV DEFENSE [D19]

W: Robert Keating (2230)

B: O. Chernin (2308)

1995 Golden Knights

1 d4 d5 2 c4 c6 3 Nf3 Nf6 4 Nc3 dxc4 5 a4 Bf5 6 e3 e6 7 Bxc4 Bb4 8 00 00 9 Qe2 Nbd7 10 e4 Bg6 11 Bd3 Bh5 12 Bf4 Re8 13 e5 Nd5 14 Nxd5 cxd5 15 h3 a6 16 g4 Bg6 17 h4 Nb8 18 h5 Bxd3 19 Qxd3 Nc6 20 Ng5 g6 21 Qh3 Qe7 22 Nxb7 Nxd4 23 hxg6, Black resigns.

•David White has won the 2001 APCT Rook Championship. Here is an example of his attacking skill. Watch out for sharp edges!

FRENCH DEFENSE [C10]

W: David White (2313)

B: J. Nash (2210)

APCT 2001

1 e4 e6 2 d4 d5 3 Nd2 dxe4 4 Nxe4 Nd7 5 Nf3 Be7 6 Bd3 Ngf6 7 0-0 Nxe4 8 Bxe4 Nf6 9 Bd3 0-0 10 Ne5 Nd7 11 Be3 Nxe5 12 dxe5 Qd5 13 f4 Rd8 14 Qe2 Bd7 15 c4 Qa5 16 a3 Ba4 17 b4 Qa6 18 f5 exf5 19 Bxf5 Be8 20 Be4 Rab8 21 Qg4 g6 22 Qf4 c6 23 Bf3 Bf8 24 Be2 Bg7 25 Bc5 b5 26 Rf2 Rb7 27 Qh4 Rbd7 28 Bg4 Rd3 29 Raf1 Qb7 30 e6 f5 31 e7 R8d4 32 Rxf5 gxf5 33 Bxf5 Rxh4 34 Be6+ Bf7 35 e8(Q)+, Black resigns.

Neil McDonald's *King's Gambit* book stops at 17 Nd2, stating Black's position is perilous. Dowd believes it is defensible.

FALKBEER COUNTER GAMBIT [C32]

W: Pjtor183 (1835)

B: Steven Dowd (2192)

E-mail 2004

1 e4 e5 2 f4 d5 3 exd5 e4 4 d3 Nf6 5 dxe4 Nxe4 6 Be3 Bd6 7 Nf3 0-0 8 Bd3 Re8 9 0-0 Nf6 10 Ne5 Bxe5 11 fxe5 Nxd5 12 Qh5 g6 13 Qh6 Nxe3 14 Rxf7 Kxf7 15 Qxh7+ Ke6 16 Qxg6+ Kxe5 17 Nd2 Bf5 18 Nc4+ Kd4 19 Qg7+ Kd5 20 Qf7+ Kc5 21 b4+ Kc6 22 Nxe3 Bxd3 23 cxd3 Rxe3 24 Qc4+ Kd7 25 Qd4+ Kc8 26 Qxe3 Nc6 27 Rf1 a6 28 a3 b6 29 Rf4 Kb7 30 h4 Qd5 31 g4 Rd8 32 Rf3 Nd4 33 Rh3 Qb3 34 h5 Qd1+ 35 Kh2 Qxg4 36 h6 Ka7 37 Qe7 Qf4+ 38 Kh1 Rg8 39 Qe1 Ne2 40 h7 Qf5 41 Kh2 Qe5+, White resigns.

CORRESPONDENCE CHESS TOURNAMENT UPDATES FOR NOVEMBER 2004

CONGRATULATIONS!

CANDIDATE MASTERS

David M. Ballard 2004
Charles Shoulders 2012
Jimmy Portillo 2036

TOURNAMENT WINNERS

JOHN COLLINS MEMORIAL CLASS TOURNAMENT
John Buhalo 03CB49 6-0

VICTOR PALCIAUSKAS PRIZE TOURNAMENT

Michael Marshall 02UAB11
5-1 tied 1st place
Winston Kinsler 02UAB11
5-1 tied 1st place

E-MAIL TOURNAMENT WINNERS

SWIFT QUAD TOURNAMENT
Edward Laurin 04SQ14 6-0



CHANGE A CHILD'S LIFE

Include a bequest for the U.S. Chess Trust in your will. To do this, add this clause to your will:

"I give to the U.S. Chess Trust, a charitable trust organized under the Laws of Massachusetts, c/o the U.S. Chess Federation, 3068 US Route 9W, Suite 100, New Windsor, NY 12553, the sum of \$_____ to be used for chess educational and charitable purposes."

If you already have a will, a short separate document (known as a "codicil") can add the bequest above. Your attorney can do this easily and should be consulted. Any such gift is deductible by your estate for U.S. estate and gift tax purposes. You may get further information on this matter by calling:

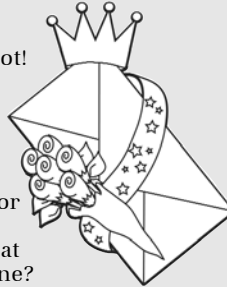
845-562-8350, ext. 138, Barb Vandermark.

CORRESPONDENCE CHESS PLAYERS

You are invited to send me your comments, questions and correspondence games (with or without annotation). Because of the volume of mail, submissions cannot be returned, and personal replies are not possible. Send letters to: Alex Dunne, *Chess Life*, 3068 US Route 9W, Suite 100, New Windsor, NY 12553 or e-mail: alex.dunne@cqservices.com

POSTAL BEAUTY CONTEST

Is it right that beauty is so often only its own reward? Surely not! And thanks to the generosity of Dr. Ronald Hames, the scales of justice have become more evenly balanced between how one wins and the hard fact of victory. For now in *Chess Life* the players who conduct scintillating games will receive the Hames Correspondence Game of the Year Awards. Resident postal editor Alex Dunne is the judge of a contest with prizes of \$100 for the best game by a master and \$100 for the best game by a non-master to appear in Check is in the Mail during a given year. What better reason, then, to send your postal brilliancies to Alex Dunne?



CHECK OUT USCF'S CORRESPONDENCE CHESS RATED EVENTS

USCF's 58th ANNUAL

2005 Open Correspondence Chess Golden Knights Championship **\$1,500 First Prize**

(plus title of USCF's Golden Knights Champion and plaque)

• 2nd place \$800 • 3rd place \$600 • 4th place \$400 • 5th place \$200 • 6th thru 10th place \$100 each. **Entry fee: \$25.**

The entry deadline is November 30, 2005.

These USCF Correspondence Chess events are rated and open to all USCF members who reside on the North American continent, islands, or Hawaii, as well as those USCF members with an APO or FPO address. USCF members who reside outside of the North American continent are welcome to participate in e-mail events. Your USCF membership must remain current for the duration of the event, and entry fees must be paid in U.S. dollars. Those new to USCF Correspondence Chess, please estimate your strength: **Class A:** 1800-1999 (very strong); **Class B:** 1600-1799 (strong); **Class C:** 1400-1599 (intermediate); **Class D:** 1399 and below (beginner level). **Note:** Prize fund guaranteed (based on 400 entries) and will be increased or decreased proportionately per number of entries assigned.

CORRESPONDENCE CHESS MATCHES (TWO PLAYERS)

* **\$5 entry fee per person** with two, four or six game options.

WIN A CORRESPONDENCE CHESS TROPHY

* Four-player, double round-robin with class-level pairings. * 1st place winner receives a trophy. * **Entry fee: \$10.**

VICTOR PALCIAUSKAS PRIZE TOURNAMENTS

* Seven-player class-level pairings, one game with each of six opponents. * Players must have a USCF CC rating to enter. * 1st-place winner receives \$130 cash prize and a certificate signed by Victor Palciauskas. * **Entry fee: \$25.**

JOHN W. COLLINS MEMORIAL CLASS TOURNAMENTS

* Four-player, double round-robin with class-level pairings (unrateds welcome). * 1st-place winner receives a John W. Collins certificate. * **Entry fee: \$7.**

E-MAIL RATED EVENTS (NEED E-MAIL ACCESS):

LIGHTNING MATCH * Two players with two, four or six game option. * **Entry fee \$5 per person.**

Swift Quads * Four-player, double round-robin format. * 1st-place prize merchandise credit of \$30. * **Entry fee: \$10.**

Express Tournament

* Seven-player events, one game with each of six opponents. * Prizes: *1st place* \$30 merchandise credit, *2nd place* \$20 credit. * **Entry fee: \$15.**

Please circle event(s) selected.



U.S. Chess Federation
www.uschess.org



USCF's 2nd ANNUAL

2005 E-mail Correspondence Chess Electronic Knights Championship

(Seven-player sections, one game with each of six opponents.)

\$1,500 First Prize

(plus title of USCF's Electronic Knights Champion and plaque)

• 2nd place \$800 • 3rd place \$600 • 4th place \$400 • 5th place \$200 • 6th thru 10th place \$100 each. **Entry fee: \$25.**

The entry deadline is November 30, 2005.

These USCF Correspondence Chess events are rated and open to all USCF members with e-mail access. Your USCF membership must remain current for the duration of the event, and entry fees must be paid in U.S. dollars. Maximum number of tournament entries allowed for the year for each player is ten.

Note: Prize fund guaranteed (based on 400 entries) and will be increased or decreased proportionately per number of entries assigned.

NOTE: Except for Lightning Matches, Swift Quads and Express Tournaments, players will use post office mail, unless opponents agree to use e-mail.

TO ENTER: 800-388-KING (5464) FAX 845-561-CHES (2437)

Name _____
USCF ID# _____
Address _____ City _____
State _____ ZIP _____ Phone _____
E-mail _____
Credit card # (VISA, MC, Discover, AMEX) _____ Exp. date _____
If using VISA, need V-code _____
 Check here if you do not wish to have an opponent who is incarcerated.
Sending a check? Make it payable to U.S. Chess and mail to:
3068 US Rt. 9W, Suite 100, New Windsor, NY 12553