



# check is in the mail

by FIDE Master Alex Dunne

## iccm craig jones

Craig Jones (born November 18, 1960) has earned his International Correspondence Chess Master title. Previously the co-winner with Konstantin Dolgitsger of the 12th USCCC, Craig has qualified for the World Candidates Tournament, the winner of which qualifies for the World Championship Finals. Go, Craig! The following is the game that gave him the IM title.

### GAME OF THE MONTH

A speculative sacrifice on Move 20 leads to an everlasting attack, a victory for Craig, and a new American IM.

#### FRENCH DEFENSE [C11]

W: Mario Adriano (2404)  
B: Craig Jones (2430)

North American Championship Finals, 2003

Notes by ICCM Craig Jones

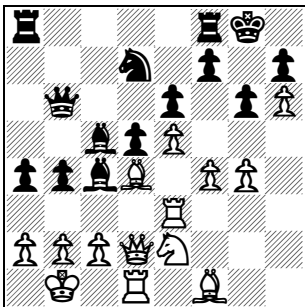
1. e4 e6 2. d4 d5 3. Nc3 Nf6 4. e5 Nfd7 5. f4 c5 6. Nf3 Nc6 7. Be3 cxd4 8. Nxd4 Bc5 9. Qd2 0-0 10. 0-0-0 a6 11. h4 Nxd4 12. Bxd4 b5 13. Rh3 b4 14. Ne2

This is all well known theory, and 11. Na4 is considered the main line.

14. ... a5 15. h5 Ba6 16. h6 g6 17. g4 I think 17. Kb1 is more flexible. It is almost always played with the idea of following up with Rc1 and c2-c3 as a highly effective defense. Usually f4-f5 is played in these types of positions with the specific tactical idea of Qg5.

17. ... Qb6 18. Kb1 a4 19. Re3 This move seems wrong. It is consistent with preparing f4-f5 by overprotecting e5, but this plan is too slow and awkward. Normal seems 19. Rc1.

19. ... Bc4



Setting a trap and also trying to soften up White's defenses.

20. c3?!

Provocative by design or neglect?! I don't know, but after this Black sacrifices a piece for a long, sustained attack

in which White will find it difficult to defend. Perhaps 20. Ng3 is best.

20. ... Bxa2+! 21. Kxa2 b3+ 22. Kb1 a3 23. Nc1

How does White defend? It is not clear. White has many ideas, but Black seems to maintain more than enough pressure.

23. ... Rfb8

Black first overprotects b3 before getting on with his main plan of doubling or tripling on the a-file.

24. Rh3

White has no obvious defensive plan and simply seems to wait and hope Black overplays his hand.

24. ... axb2 25. Qxb2 Ra4

Black has two main ideas. One is to prepare ... Ba3. The other is to triple on the a-file and simply crash through.

26. f5

White desperately tries to attack — too little, too late.

26. ... Qa7 27. Rd2 Qa8!

Now Black threatens ... Ba3.

28. fxe6 fxe6 29. Bxc5 Nxc5 30. c4

Again, White has many moves, but Black maintains huge pressure.

30. ... dxc4 31. Bg2 Qa5 32. Bc6

Black wins after 32. Qc3 b2 33. Qxa5 bxc1=Q+ 34. Kxc1 Rxa5.

32. ... Ra2 33. Nxa2 bxa2+ 34. Ka1 Nb3+ 35. Rxb3 Rxb3 36. Qxa2 Qxe5+ 37. Rb2 Qe1+, White resigns.

How do you beat a Super-GM who is now specializing in correspondence play? Hans-Marcus Elwert of Germany shows the way.

#### QUEEN'S GAMBIT DECLINED [D56]

W: Ulf Andersson (2805)  
B: Hans-Marcus Elwert (2681)

Millennium E-mail Tournament, 1999

1. d4 Nf6 2. c4 e6 3. Nf3 d5 4. Nc3 Be7 5. Bg5 h6 6. Bh4 0-0 7. e3 Ne4 8. Bxe7 Qxe7 9. Rc1 c6 10. Bd3 Nxc3 11. Rxc3 dxc4 12. Rxc4 Nd7 13. Bb1 e5 14. 0-0 exd4 15. Nxd4 Nf6 16. Qc2 Re8 17. h3 Bd7 18. Re1 Rac8 19. e4 c5 20. Nf3 Nh7 21. Rc3 b6 22. e5 Nf8 23. Nd2 Rcd8 24. Rce3 Bf5 25. Qc1 Bxb1 26. Nxb1 Qe6 27. Nc3 Ng6 28. Re4 Rd4 29. f4 Red8 30. R1e2 h5 31. Rf2 Rxe4 32. Nxe4 Rd4 33. Qb1 Nxf4 34. Rxf4 Qxe5, White resigns.

Robert Rizzo has been collecting Absolute games. Seeing all those top-flight postal games has had to help his own game. Here's evidence.

#### SICILIANDEFENSE [B66]

W: Robert Rizzo (2365)  
B: Liban van Damme (2452)

ICCF E-mail, 2001

1. e4 c5 2. Nf3 Nc6 3. d4 cxd4 4. Nxd4 Nf6 5. Nc3 d6 6. Bg5 Qb6 7. Nb3 e6 8. Qd2 a6 9. 0-0-0 Be7 10. Kb1 0-0 11. f3 Rd8 12. Be3 Qc7 13. Qf2 Nd7 14. h4 b5 15. g4 Bb7 16. g5 Nce5 17. h5 Rdc8 18. g6 hxg6 19. hxg6 Nxg6 20. Qh2 Nf6 21. Bd3 Kf8 22. Rdg1 Ke8 23. Nd4 Qd7 24. Rxc6 fxg6 25. e5 dxe5 26. Bxc6+ Kd8 27. Ndx5 Bf8 28. Rd1 axb5 29. Rxd7+ Kxd7 30. Qxe5 b4 31. Bf7 Rc6 32. Nb5 Ke7 33. Bxe6 Rxe6 34. Qc7+ Nd7 35. Bg5+ Ke8 36. Qxb7 Re1+ 37. Bc1 Rb8 38. Qd5 Bc5 39. Nc7+ Ke7 40. Qg5+, Black resigns.

Black is an inmate. As prisoners don't have access to computers, this game is certified as at least 50% computer free.

#### CARO-KANN DEFENSE [B12]

W: Lyle Cherner (1787)  
B: Walter Lewis (2136)

Correspondence, 1997-1998

1. e4 c6 2. d4 d5 3. f3 e6 4. Nc3 Nf6 5. Bg5 h6 6. Bh4 Qb6 7. Rb1 c5 8. Bxf6 gxf6 9. Bb5+ Nc6 10. exd5 cxd4 11. dxc6 bxc6 12. Bxc6+ Qxc6 13. Qxd4 Bd7 14. Nge2 Be7 15. Qg4 0-0-0 16. Qg7 Rdf8 17. 0-0 Qc5+ 18. Kh1 Rhg8 19. Qxh6 Rh8 20. Qd2 Rxh2+ 21. Kxh2 Rh8+ 22. Kg3 f5 23. Qd4 Qc7+ 24. f4 Rg8+ 25. Kh2 Bc5 26. Qf6 Bc6 27. g3 Be7 28. Qd4 f6 29. Ng1 Rh8+ 30. Nh3 Bd8 31. Ne2 Rxh3+ 32. Kg1 Qh7 33. c4 Rh2 34. Rfd1 Bb6 35. c5 Qh3, White resigns.

**IMPORTANT USCF NOTICE!**  
Check out the USCF Ballot Voting information! If you are interested in this year's candidates see page 58 and the enclosed ballot!

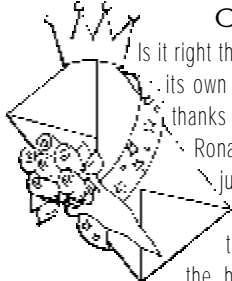
#### SPREAD THE WORD TO FELLOW USCF MEMBERS!

This is an historic year for U.S. Chess Federation members! Any member whose membership is current through the end of July 2003, is 16 years of age or older as of June 1, 2003, and is a resident of the USA, can vote in the USCF Executive Board election. Each member in this category has his or her ballot inside this issue of *Chess Life*. The voter must furnish his or her date of birth. Remember, this is your Federation. Take an active role in its governance.

Vote and encourage other Members to vote!

Correspondence chessplayers are invited to send their comments, questions and correspondence games (with or without annotation). Because of the volume of mail, submissions cannot be returned, and personal replies are not possible. Send your letters to: Alex Dunne • Chess Life • 3054 US Route 9W • New Windsor, NY 12553 • e-mail: alex.dunne@cqservices.com

## POSTAL BEAUTY CONTEST



Is it right that beauty is so often only its own reward? Surely not! And thanks to the generosity of Dr. Ronald Hames, the scales of justice have become more evenly balanced between how one wins and the hard fact of victory. For now in Chess Life the players who conduct scintillating games will receive the Hames Correspondence Game of the Year Awards. Resident postal editor Alex Dunne is the judge of a contest with prizes of \$100 for the best game by a master and \$100 for the best game by a non-master to appear in Check is in the Mail during a given year. What better reason, then, to send your postal brilliancies to Alex Dunne?

## CHECK OUT USCF'S CORRESPONDENCE CHESS RATED EVENTS

### CORRESPONDENCE CHESS MATCHES (TWO PLAYERS)

\$5 entry fee per person with two, four or six game options.

### WIN A CORRESPONDENCE CHESS TROPHY

Four player, double round-robin with class-level pairings. Entry fee: \$10. 1st place winner receives a trophy.

### VICTOR PALCIAUSKAS PRIZE TOURNAMENTS

Seven-player class-level pairings, one game with each of six opponents. Entry fee: \$25. Players must have a USCF CC rating to enter. 1st place winner receives \$130 cash prize and a certificate signed by Victor Palciauskas.

### JOHN W. COLLINS MEMORIAL CLASS TOURNAMENTS

Four-player, double round-robin with class-level pairings (unrateds welcome). 1st place winner receives a John W. Collins certificate. Entry fee: \$7.

### E-MAIL RATED EVENTS (NEED E-MAIL ACCESS):

**LIGHTNING MATCH** Two players with two, four or six game option. Entry fee: \$5 per person. **Swift Quads** Four player, double round-robin format.

Entry fee: \$10. 1st place prize merchandise credit of \$30.

### Express Tournament

Seven-player events, one game with each of six opponents. Prizes: 1st place \$30 merchandise credit, 2nd place \$20 credit. Entry fee: \$15.

**NOTE:** Except for Lightning Matches, Swift Quads and Express Tournaments, players will use post office mail, unless opponents agree to use e-mail.



## USCF's 56th ANNUAL

2003 Open Correspondence Chess Golden Knights Championship

**\$1,500 First Prize**

(plus title of USCF's Golden Knights Champion and plaque)

• 2nd place \$800 • 3rd place \$600 • 4th place \$400 • 5th place \$200 • 6th thru 10th place \$100 each. Entry fee: \$25.

**The entry deadline is November 30, 2003.**

These USCF Correspondence Chess events are rated and open to all USCF members who reside on the North American continent, islands, or Hawaii, as well as those USCF members with an APO or FPO address. USCF members who reside outside of the North American continent are welcome to participate in e-mail events. Your USCF membership must remain current for the duration of the event, and entry fees must be paid in U.S. dollars. Those new to USCF Correspondence Chess, please estimate your strength: **Class A:** 1800-1999 (very strong); **Class B:** 1600-1799 (strong); **Class C:** 1400-1599 (intermediate); **Class D:** 1399 and below (beginner level). Note: Prize fund guaranteed (based on 400 entries) and will be increased or decreased proportionately per number of entries assigned.

To Enter: 800-388-KING (5464) Fax 845-561-CHES (2437)

Name \_\_\_\_\_  
 USCF # \_\_\_\_\_  
 Address \_\_\_\_\_  
 State \_\_\_\_\_ ZIP \_\_\_\_\_ Phone \_\_\_\_\_  
 E-mail \_\_\_\_\_  
 Credit card # (Visa, MC, Discover, AMEX) \_\_\_\_\_ Exp. date \_\_\_\_\_

Check here if you do not wish to have an opponent who is incarcerated.

Sending a check? Make it payable to U.S. Chess and mail to: 3054 US Rt. 9W, New Windsor, NY 12553

## 2003 U.S. Junior Open

June 20-22, 2003

SUNY Maritime Academy,  
 Fort Schuyler Bronx, New York 10465  
 (914) 779-6024 & (917) 553-4522

June 15-20, 2003

## Challenge Chess Camp

**TOURNAMENT FORMAT:** 6 Rounds, Swiss System in 3 Sections by Age.

**THREE SECTIONS:** Under 21; Under 15; Under 11 (ages as of 1/1/03).

**ACCOMMODATIONS:** See www.challengecamps.com. SUNY Maritime has rooms available for \$45/night per person. Meals are available at the college cafeteria — Breakfast, Lunch and Dinner optional daily package (\$19.95/person).

### ENTRY FEES

Fee is \$50 by June 5th, \$70 after or on site. USCF memberships required for all participants. Players may take up to two ½ point byes if requested before Round 2.

Please make all checks payable to: Challenge Chess Camp, PO Box 586, Bronxville, NY 10708

In conjunction with the U.S. Junior Open, we are excited to bring you these related chess events:

**2003 Challenge Chess Camp at SUNY Maritime – June 15-20, 2003**

**George Koltanowski Seminar at SUNY Maritime – June 19-20, 2003**

### AWARDS

**UNDER 21:** The winner is seeded into the 2004 U.S. Junior Championship Invitational. The winner will also be awarded a Four Year Full Tuition & Fees Scholarship to the University of Texas at Dallas (UTD). The winner must meet the admissions standards of the University. (See website for additional details.)

Trophies awarded to the Top 10, Top Age 19, 18, 17, 16, 15 & under 15.

**UNDER 15:** The winner receives a Chronos Chess Clock. Trophies awarded to the Top 10, Top Age 13, 12, 11, & under 11.

**UNDER 11:** The winner receives a Chronos Chess Clock. Trophies awarded to the Top 10, Top Age 9, 8, 7 & under 7.

For more information about the U.S. Junior Open or the Challenge Chess Camp, please contact the Event Organizers:

Carole Berman (914) 779-6024

CBBerman@aol.com or

Beatriz Marinello — (917) 553-4522 or

BeatrizMarinello@aol.com

## 2003 Challenge Chess Camp June 15-20

**SUNY Maritime Academy,  
 Fort Schuyler Bronx, New York**  
 For resident & day students grades 2 and up  
**Directed by Beatriz Marinello, WIM**  
 Learn from International Grand Masters  
 Play in tournaments  
 Excellent sports & recreation facilities  
 Fun evening activities  
 Terrific dining & sleeping quarters